



GREGORY BROWN
RESIDENTIAL SALES & LETTINGS

OIEO £625,000 Freehold
FOR SALE



Ford Close, Ashford, Surrey, TW15 3SB

OFFERING GREAT SCOPE FOR EXTENSION (S.T.R.P.P.) IS THIS WELL PRESENTED THREE BEDROOM DETACHED PROPERTY SITUATED ALONG THIS MUCH SOUGHT AFTER NO-THROUGH ROAD IDEALLY LOCATED FOR EASY ACCESS TO ASHFORD TOWN CENTRE, MAINLINE TRAIN STATION, LOCAL SCHOOLS & MOTORWAY NETWORKS. The property benefits from a spacious lounge, dining room, luxury kitchen/breakfast room with separate utility, downstairs W.C/shower room, three well proportioned bedrooms, modern white bathroom suite, large secluded rear garden and off-street parking. Viewings Highly Recommended!

Gregory Brown

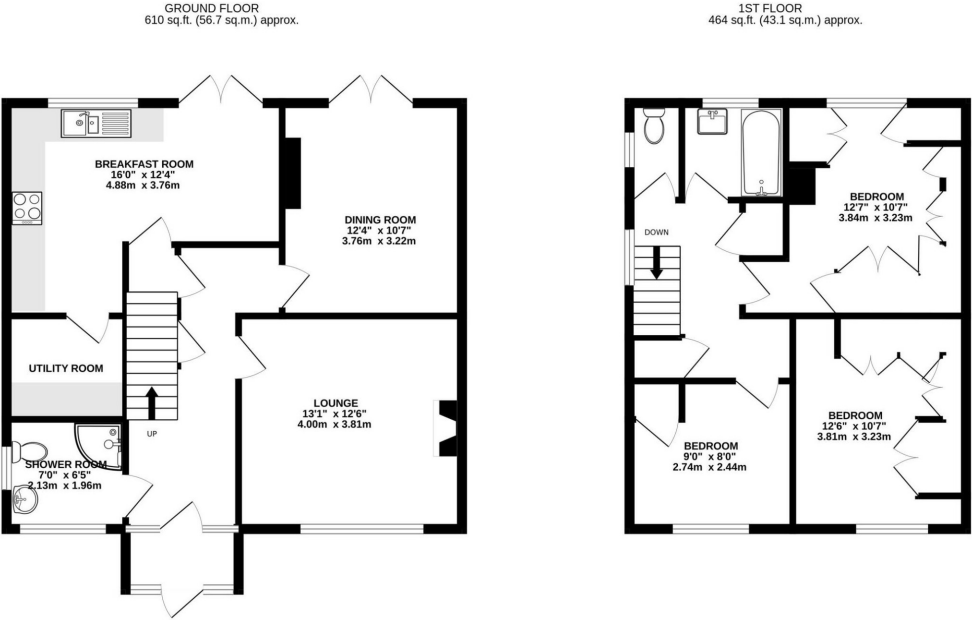
127a, High Street, Staines-upon-Thames, TW18 4PD

01784 451458

staines@gregory-brown.co.uk

ROOM DESCRIPTIONS

FLOORPLAN & EPC



TOTAL FLOOR AREA: 1074 sq.ft. (99.8 sq.m.) approx.

Whilst every attempt has been made to ensure the accuracy of the floorplan contained here, measurements of doors, windows, rooms and any other items are approximate and no responsibility is taken for any error, omission or mis-statement. This plan is for illustrative purposes only and should be used as such by any prospective purchaser. The services, systems and appliances shown have not been tested and no guarantee as to their operability or efficiency can be given.

Made with Metropex ©2024

