

40 Kitchener Road

ELMS VALE, Dover
CT17 9PD

£230,000 FREEHOLD

Draft Details...FOR SALE THROUGH BURNAP + ABEL...Price Range £230,000 - £240,000 | Beautiful Three-Bedroom Terraced Home in Popular Elms Vale Location | Modern Kitchen & Bathroom | Private Rear Garden | Double Glazing | Gas Central Heating | Situated in the ever-popular Elms Vale area, this beautiful three-bedroom terraced house offers a perfect blend of modern living and everyday convenience. The home features a stylish modern kitchen and bathroom, double glazing and gas central heating throughout. A private rear garden provides the ideal outdoor space for relaxing or entertaining. Located within close proximity to local schools and shops, this well-presented property is ideal for first-time buyers and those with a growing family looking for a comfortable and conveniently placed home. For your chance to view call Burnap + Abel on 01304 271907.



Lounge

13' 5" x 12' 2" (4.09m x 3.71m)

Kitchen

10' 10" x 10' 8" (3.30m x 3.25m)

Bathroom

10' 8" x 7' 11" (3.25m x 2.41m)

Study

7' 7" x 4' 3" (2.31m x 1.30m)

Bedroom One

13' 7" x 10' 3" (4.14m x 3.12m)

Bedroom Two

10' 9" x 8' 3" (3.28m x 2.51m)

Bedroom Three

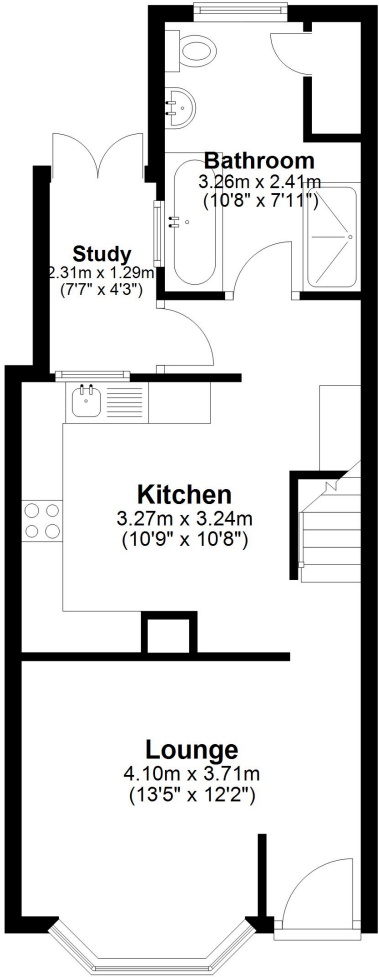
9' 6" x 8' 0" (2.90m x 2.44m)

Garden

Area Information

Elms Vale is within easy reach of Dover Town Centre with its range of amenities including shopping, educational and recreational facilities together with the Docks and seafront offering regular ferry crossings to The Continent and within easy access of the St James' Retail Park. The property is on the main bus route and there are several primary and secondary schools are dotted around the town. The nearby A2 dual carriageway offers a fast connection to the Cathedral City of Canterbury. Dover Priory mainline railway station offers excellent fast speed connections to the capital.

Ground Floor
Approx. 40.6 sq. metres (437.1 sq. feet)



First Floor
Approx. 34.0 sq. metres (366.4 sq. feet)

