



Tower Bridge Road, London, SE1 3LJ

**Cow & Co**  
LONDON



A stunning warehouse conversion apartment moments from Bermondsey Street and London Bridge Station.

Situated within this quiet gated development just a short distance from Tower Bridge and The River Thames is this stunning one bedroom apartment offering plenty of character features including exposed brickwork and wooden beams. The property comprises of a large open plan reception room with a fully fitted kitchen, a large bedroom, a hall area and a modern bathroom.

With an abundance of character throughout, this home blends history with modernity and must be viewed.

Formerly the site of the Sarsons Vinegar Brewery, Maltings Place is a private, gated development with concierge and 24hr security. Considering its quiet position, the development is incredibly close to some of London's hotspots (Borough and Maltby St markets, Tower Bridge etc.) and is perfect for access to London Bridge station, offering quick transport links into central London and its surrounds including Canary Wharf, Charing Cross, Bond Street and Kings Cross as well as mainline rail services to Brighton and Gatwick Airport.

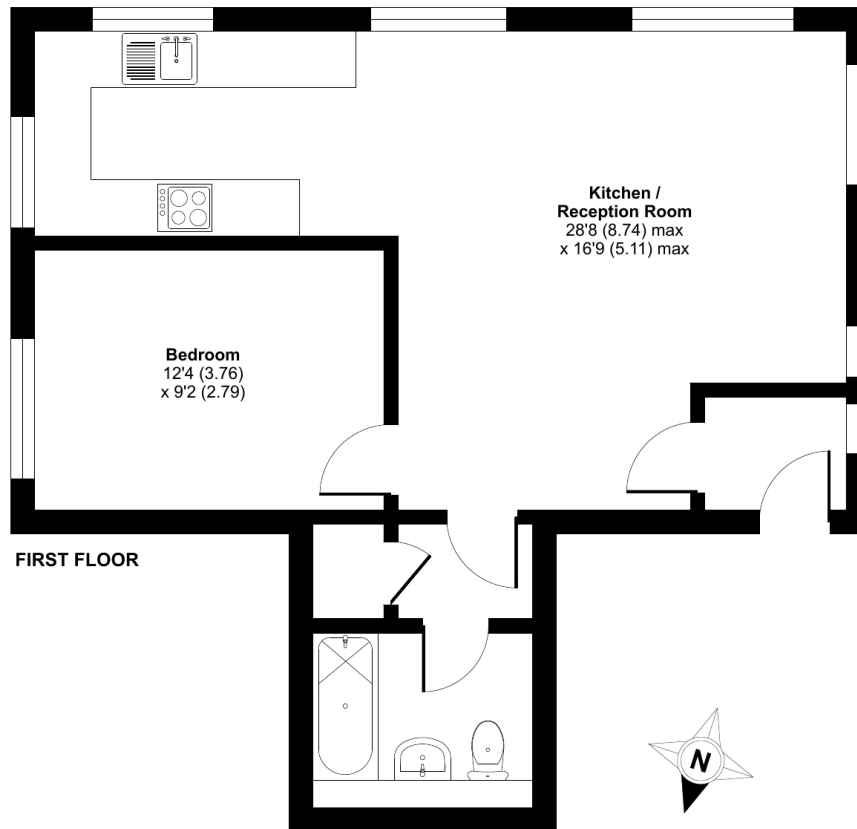


- One bedroom warehouse conversion apartment
- Secure electronic gated development
- Concierge
- Excellent amenities and transport links nearby
- Close to Bermondsey Street and Borough Market
- Triple aspect reception space
- 24 hour security
- Modern specification

# Maltings Place Tower Bridge Road, LONDON, SE1

Approximate Area = 566 sq ft / 52.5 sq m

For identification only - Not to scale



Floor plan produced in accordance with RICS Property Measurement Standards incorporating International Property Measurement Standards (IPMS2 Residential). © nchecon 2023. Produced for Cow & Co Properties Ltd. REF: 976181

Tel: 0208 065 0010  
Email: [thehub@cowandco-london.com](mailto:thehub@cowandco-london.com)  
Web: [cowandco-london.com](http://cowandco-london.com)

Agents note: All measurements are approximate and whilst every attempt has been made to ensure accuracy they are for general guidance only and must not be relied on. The fixture and fittings referred to have not been tested and therefore no guarantee can be given that they are in working order. Internal photographs are reproduced for general information and it must not be inferred that any item shown is included with the property.

**Cow & Co**  
LONDON