

## 26 White Cliff Way

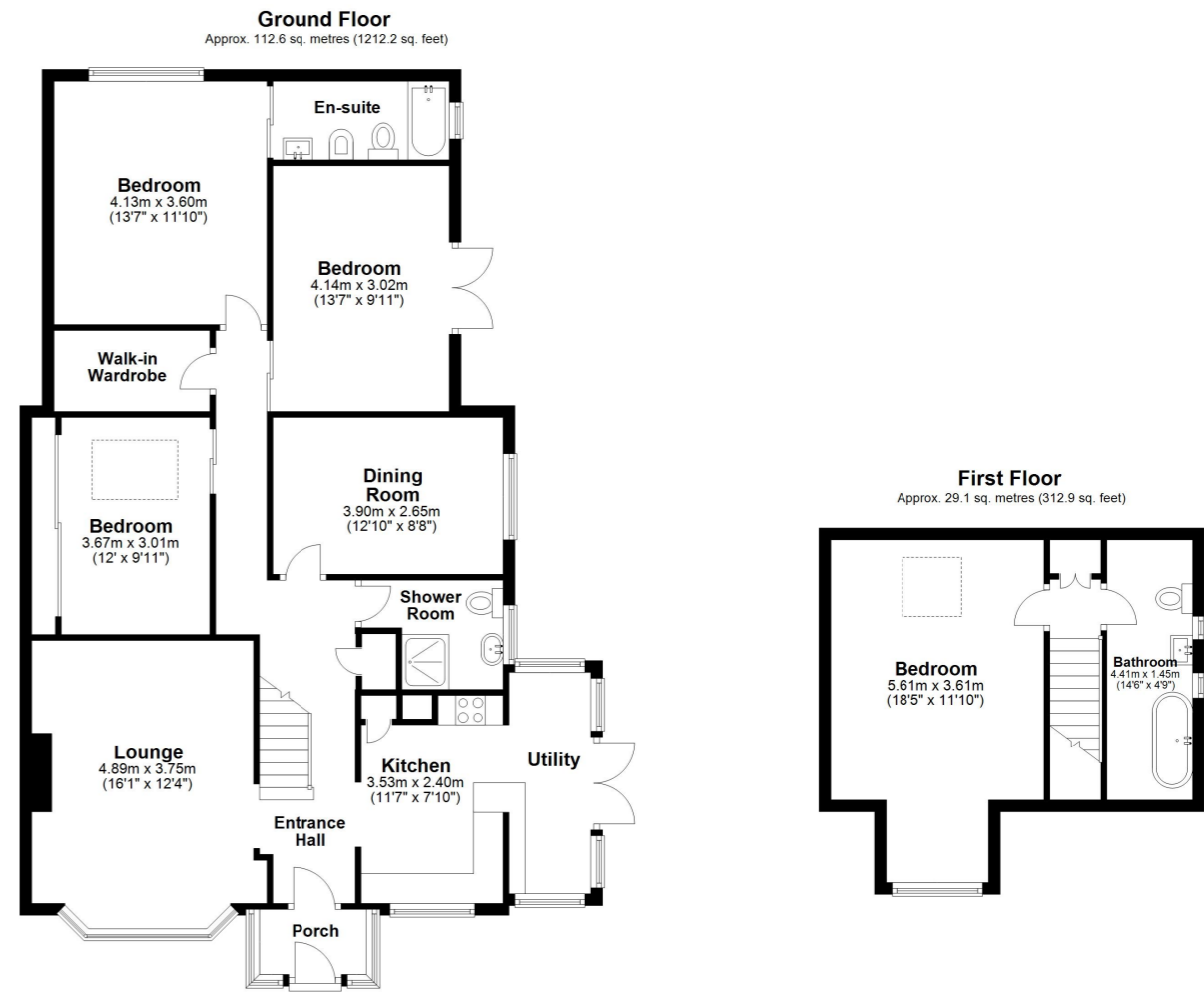
Folkestone  
CT19 6DX

**£500,000 FREEHOLD**

FOR SALE WITH BURNAP + ABEL... Welcome to your dream coastal retreat at White Cliff Way, Folkestone. This stunning 4-bedroom chalet bungalow boasts beautiful sea views, perfect for watching the sun set over the horizon every evening. Step inside and be greeted by two spacious reception rooms, ideal for entertaining guests or relaxing with your loved ones. The property features 1 bathroom and 2 en-suites, providing convenience and luxury for you and your family. Situated on a large corner plot, this home provides plenty of outdoor space for gardening or enjoying the fresh sea breeze. With a garage and off-road parking, you'll never have to worry about finding a spot for your vehicle. Don't miss out on this rare opportunity to own a piece of paradise in Folkestone's sought after White Cliff Way. Schedule a viewing today before it's gone!



- Porch**
- Entrance Hall**
- Lounge**  
16' 1" x 12' 4" (4.90m x 3.76m)
- Dining Room**  
12' 10" x 8' 8" (3.91m x 2.64m)
- Kitchen**  
11' 7" x 7' 10" (3.53m x 2.39m)
- Utility Room**
- Shower Room**
- Bedroom One**  
12' 0" x 9' 11" (3.66m x 3.02m)
- Walk-In Wardrobe**
- Bedroom Two**  
13' 7" x 11' 10" (4.14m x 3.61m)
- En-Suite**
- Bedroom Three**  
13' 7" x 9' 11" (4.14m x 3.02m)
- First Floor Landing**
- Bedroom Four**  
18' 5" x 11' 10" (5.61m x 3.61m)
- Bathroom**  
14' 6" x 4' 9" (4.42m x 1.45m)
- Off Road Parking**
- Garage**
- Large Corner Plot Garden**



Total area: approx. 141.7 sq. metres (1525.1 sq. feet)

Whilst every attempt has been made to ensure the accuracy of the floor plan contained here, measurements of doors, windows, rooms and any other items are approximate and no responsibility is taken for any error, omission or mis-statement. This plan is for illustrative purposes only and should be used as such by any prospective purchaser. Plan produced using PlanUp.

