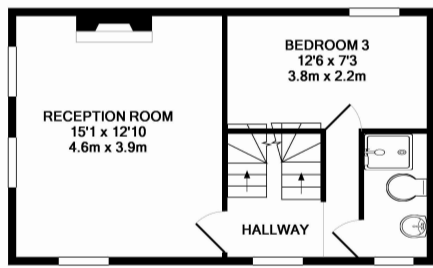
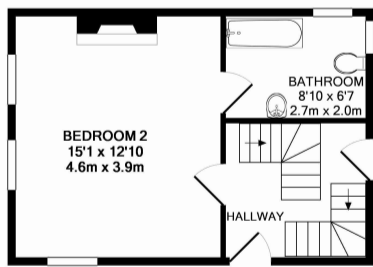


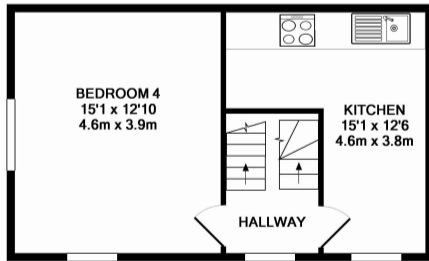
LOWER GROUND FLOOR
 APPROX. FLOOR
 AREA 308 SQ.FT.
 (28.6 SQ.M.)



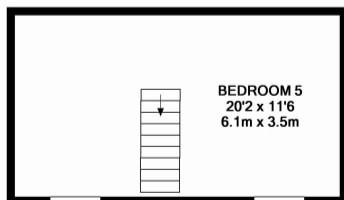
1ST FLOOR
 APPROX. FLOOR
 AREA 382 SQ.FT.
 (35.5 SQ.M.)



GROUND FLOOR
 APPROX. FLOOR
 AREA 327 SQ.FT.
 (30.4 SQ.M.)



2ND FLOOR
 APPROX. FLOOR
 AREA 382 SQ.FT.
 (35.5 SQ.M.)



ATTIC
 APPROX. FLOOR
 AREA 231 SQ.FT.
 (21.5 SQ.M.)

TOTAL APPROX. FLOOR AREA 1631 SQ.FT. (151.5 SQ.M.)

Whilst every attempt has been made to ensure the accuracy of the floor plan contained here, measurements of doors, windows, rooms and any other items are approximate and no responsibility is taken for any error, omission, or mis-statement. This plan is for illustrative purposes only and should be used as such by any prospective purchaser. The services, systems and appliances shown have not been tested and no guarantee as to their operability or efficiency can be given.

Made with Metropix ©2015

absolute living

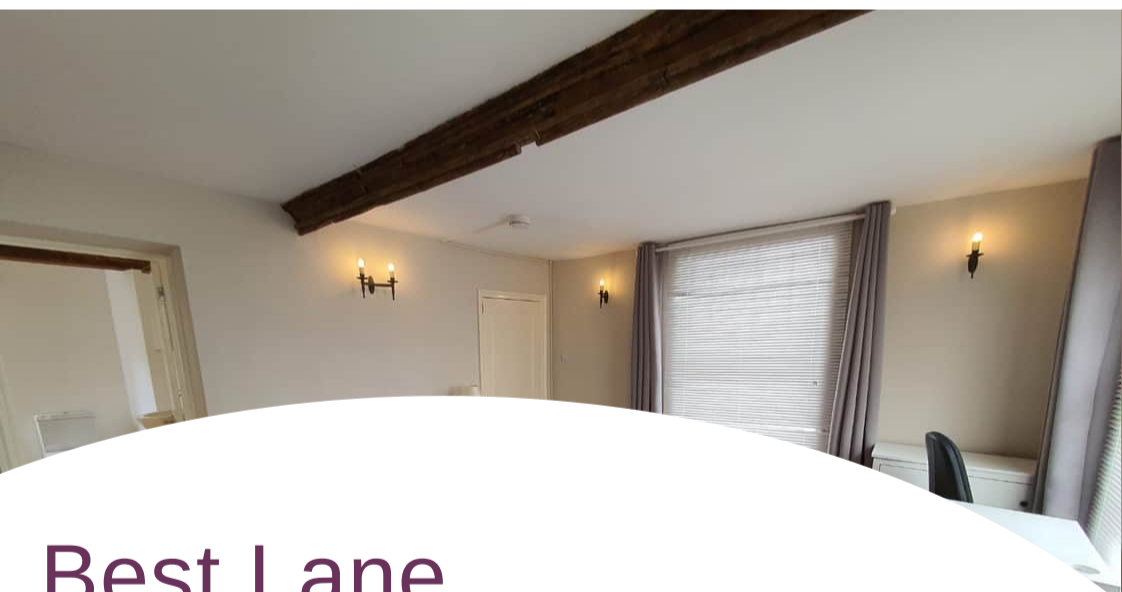


Most Central House in Canterbury. Separate Living Room and Separate Kitchen/ Dining Room. The lower floor offers a large double bedroom and a shower room with WC and sink, raised ground floor large double bedroom with en-suite bathroom, first floor large double, bathroom and living room, second floor large double and fully equipped kitchen and separate dining area, third floor large double bedroom. Very convenient for University of Kent and Canterbury Christ Church Universities. TV points in each room.



- £530 PER PERSON PER MONTH (£122.31 WEEKLY)
- THREE BATHROOMS
- STONES THROW FROM MARLOW THEATRE
- BILLS PACKAGE AVAILABLE
- VIDEO TOUR - <https://youtu.be/oUdXNQOchGA>

- FIVE DOUBLE BEDROOMS
- CITY CENTRE LOCATION
- CLOSE TO UNIVERSITIES
- Bills include Gas, Elec, Water, TV Licence, Water, Waste Water & Unlimited BT Infinity Wireless
- AVAILABLE JUL 24



Best Lane

Canterbury, CT1 2JB

BEST LANE CT1. AVAILABLE JULY 2024. Video tour available or call to make viewing. Five double bedrooms over five floors with three bathrooms and a separate living room and kitchen/ diner! Stunning and spacious listed house right in the heart of Canterbury. Amazing house, first to see will take... massive bedrooms and a bedroom per floor with three bathrooms! Moments from the High Street and Marlowe Theatre. We carry out block viewings in January on Wednesdays for 2024/25 academic year, to book a slot please email canterbury@absoluteliving.co.uk or call the office. If the numbers have been removed by the portal please contact the office to book a slot.

