

**rodgers**  
estate agents



**Denham Walk**  
Chalfont St Peter, Buckinghamshire, SL9 0EN





## £830,000 Freehold

Within striking distance of highly regarded schools, transport links and local shops, a detached house situated within a quiet cul-de-sac on the Chalfont Common side of the Village. This family home is in excellent decorative order throughout and boasts a modern kitchen, bath and shower rooms. The property has all the attributes a family would want. The ground floor comprises an entrance hall, L-shaped lounge/dining room, family room, cloaks/shower room, and a fitted kitchen. On the first floor there are four bedrooms, a family bathroom and a separate shower room. Further features include gas central heating, double-glazing, off-street parking, a south westerly facing rear garden with a summerhouse (home office/gym) and a garage. Brought to the market with **NO UPPER CHAIN**.

### Ground Floor

#### Entrance Hall

Modern UPVC front door with opaque double glazed insets with opaque double glazed windows either side. Under stairs storage cupboard. Wall thermostat control for central heating. Coved ceiling. Radiator. Return staircase leading to first floor and landing.

#### Lounge/Dining room

18' 10" x 13' 11" (5.74m x 4.24m) L-shaped with casement doors, with leaded light double glazed insets, leading to rear garden. Coved ceiling. TV point. Dimmer switch. Three radiators. Double glazed leaded light windows overlooking rear aspect.

#### Family Room

14' 10" max x 10' 11" max (4.51m x 3.36m) L-shaped with double glazed leaded light window overlooking front aspect. Velux roof light. Coved ceiling. Radiator. Door to:

#### Cloakroom/ Shower Room

Half tiled with a modern white suite incorporating walk in shower, WC, and wash hand basin with mixer tap and cupboards under. Fitted mirror. Shavers point. Coved ceiling. Radiator. Opaque double glazed leaded light window overlooking rear aspect.

#### Kitchen

18' 3" x 7' 10" (5.57m x 2.40m) A double aspect room with double glazed leaded light windows overlooking side and front aspects. Well fitted with wall and base units. Granite effect work surfaces with tiled splash backs. Hidden lighting. Two stainless steel sink units with mixer taps and drainers. Service hatch to dining area. Space for electric cooker and oven with built-in extractor hood over. Space and plumbing for dishwasher. Space and plumbing for washing machine. Coved ceiling. Radiator. UPVC casement door, with opaque leaded light glass insets, leading to covered side passageway.

## First Floor

### Landing

Airing cupboard with lagged cylinder and slatted shelving. Access to loft. Opaque leaded light double glazed window overlooking side aspect.

### Bedroom One

11' 0" x 10' 11" (3.35m x 3.34m) Coved ceiling. TV point. Telephone point. Radiator. Leaded light window overlooking rear aspect.

### Bedroom Two

11' 1" x 8' 2" (3.37m x 2.50m) Coved ceiling. Telephone point. Radiator. Leaded light window overlooking front aspect.

### Bedroom Three

10' 11" x 8' 0" (3.34m x 2.43m) Coved ceiling. Radiator. Leaded light double glazed window overlooking rear aspect.

### Bedroom Four

11' 3" x 7' 10" (3.44m x 2.40m) Coved ceiling. Radiator. Double glazed leaded light window overlooking front aspect.

### Bathroom

Half tiled with a modern white suite incorporating bath with mixer tap, WC, and wash hand basin with mixer tap. Fitted mirror. Opaque leaded light window overlooking side aspect.

### Shower Room

Fully tiled with a walk-in shower. Expel air. Heated chrome towel rail. Tiled floor.

## Outside

### Garage

17' 2" x 8' 4" (5.24m x 2.53m) With a metal up and over door. Electric light and power. Wall mounted central heating boiler. Ceiling storage space. Window overlooking rear. Pedestrian door.

### Front Garden

Off street parking for two cars. Lawn area. Wooden fence boundaries. Covered storm porch area.

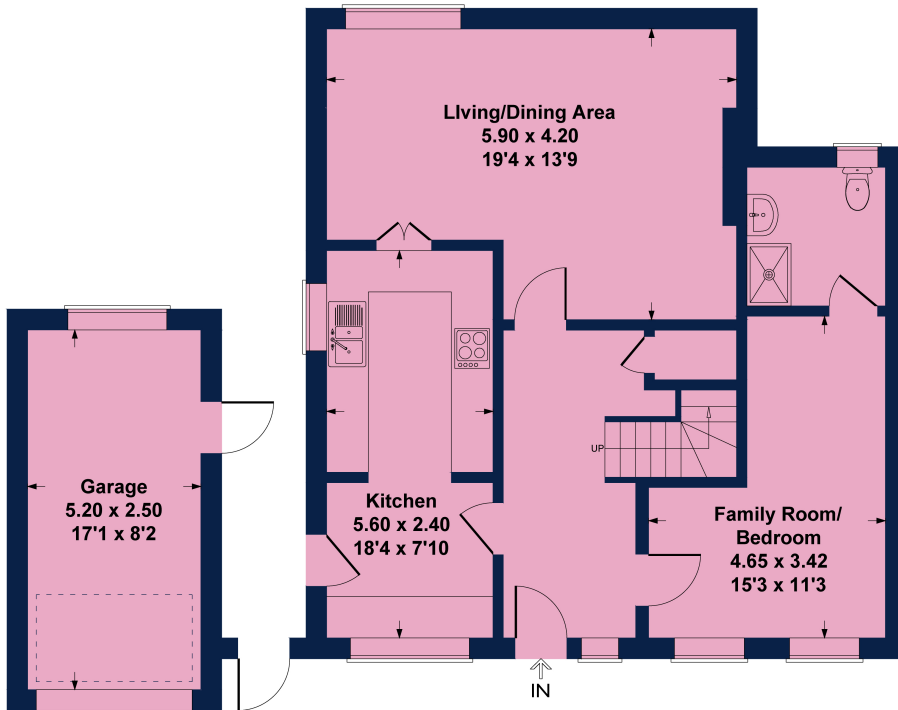
### Rear Garden

South westerly facing garden mainly laid to lawn. Paved patio areas. Flower bed borders. Wooden fence boundaries. Covered pedestrian side access with wooden gate. Wooden summerhouse (4.53m x 2.13m) with light and power (could be used as a home office/gym). Wooden shed. Outside light point. Outside tap.

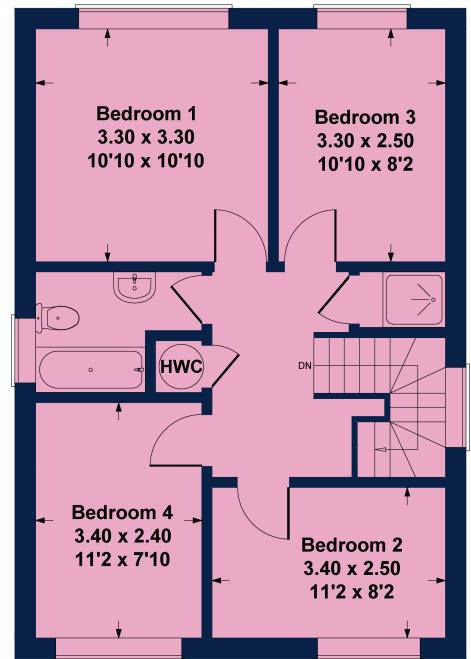


# 6 Denham Walk

Approximate Gross Internal Area  
 Ground Floor = 58.6 sq m / 631 sq ft  
 First Floor = 45.0 sq m / 484 sq ft  
 Garage = 13.0 sq m / 140 sq ft  
 Total = 116.6 sq m / 1255 sq ft



Ground Floor



First Floor

Not to Scale. Produced by The Plan Portal 2025  
 For Illustrative Purposes Only.



Important Notice: Rodgers Estate Agents give notice that their solicitors and any joint agents give notice that:

1. They are not authorised to make or give any representations or warranties in relation to the property either here or elsewhere, either on their own behalf or on behalf of their client or otherwise. They assume no responsibility for any statement that may be made in these particulars. These particulars do not form any part of any offer or contract and must not be relied upon as statements or representation of fact.

2. Any areas, measurements or distances are approximate. The text, photographs and plans are for guidance only and are not necessarily comprehensive. It should not be assumed that the property has all necessary planning, building regulation or other consents and Rodgers Estate Agents have not tested any appliances, equipment or facilities. Purchasers must satisfy themselves by inspection or otherwise.

Energy Efficiency Rating		
	Current	Potential
Very energy efficient - lower running costs		
(92-100) <b>A</b>		
(81-91) <b>B</b>		81
(69-80) <b>C</b>	72	
(55-68) <b>D</b>		
(39-54) <b>E</b>		
(21-38) <b>F</b>		
(1-20) <b>G</b>		
Not energy efficient - higher running costs		
England, Scotland & Wales		
EU Directive 2002/91/EC		

30 Market Place  
 Chalfont St Peter  
 Buckinghamshire  
 SL9 9DU

5 Park Lane  
 Harefield  
 Middlesex  
 UB9 6BJ

csp@rodgersstates.com

harefield@rodgersstates.com

For further information or an appointment to view please call: Harefield 01895 823333 Market Place 01753 880333