



Needl Crescent, Hendon, NW4

£549,950



Neeld Crescent, Hendon, NW4

Situated on the first floor of a modern building is this beautifully presented two bedroom apartment offering circa 680 Sq Ft (62 Sq M) of internal space including a generously proportioned 25ft kitchen/reception room. Key features include an allocated off street parking space, access to communal gardens and an external storage unit.

This fine apartment would make an ideal first time purchase and boasts a master bedroom with en-suite, a spacious second bedroom and a fully fitted kitchen with ample dining space.

Neeld Crescent is a quiet street and ideally situated just 0.3 miles from Hendon Central underground station (Northern Line), with local amenities, restaurants and further transport links also close by.

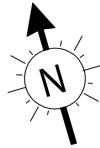
Features


- Two Bedrooms
- Two Bathrooms
- First Floor Apartment
- Modern Building
- Circa 680 Sq Ft (62 Sq M)
- Allocated Off Street Parking Space
- Communal Gardens
- External Storage Unit
- Ideal First Time Purchase
- 0.3 Miles From Hendon Central

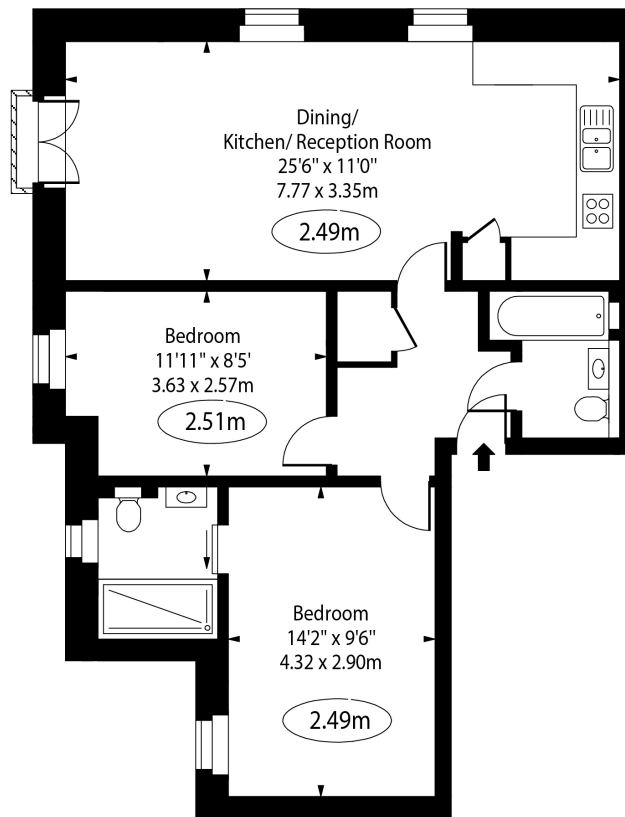


Neeld Crescent,
Hendon, NW4

Neeld Crescent, NW4



 - Ceiling Height



First Floor

Approx Gross Internal Area 676 Sq Ft - 62.80 Sq M

For Illustration Purposes Only - Not To Scale Floor Plan by www.nogaphotostudio.com Ref: No.50488

This floor plan should be used as a general outline for guidance only. Any intending purchaser or lessee should satisfy themselves by inspection, searches, enquiries and full survey as to the correctness of each statement. Any areas, measurements or distances quoted are approximate and should not be used to value a property or be the basis of any sale or let.