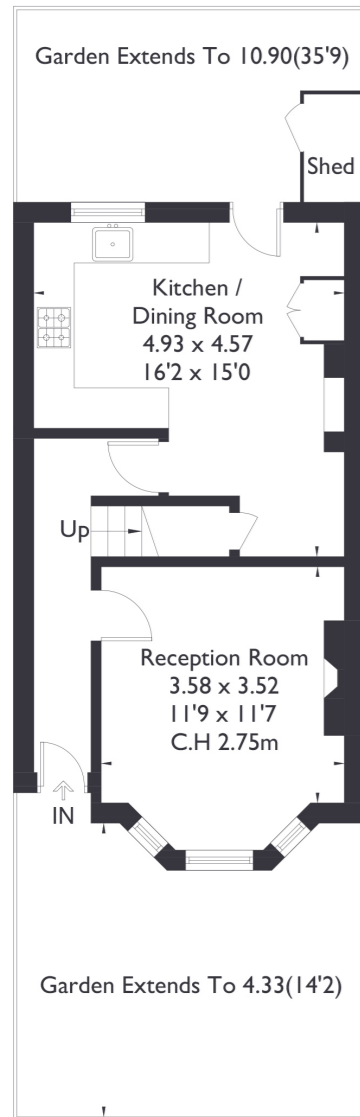
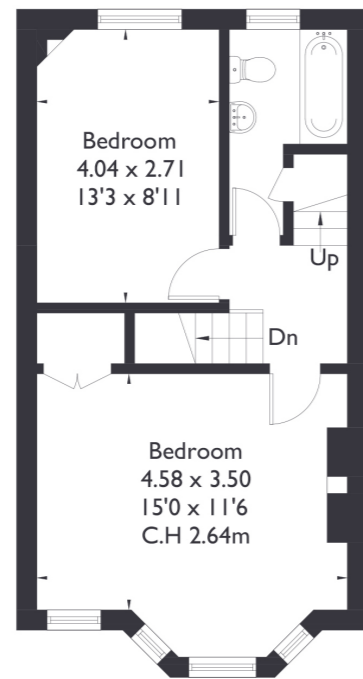


Manor Road, W13

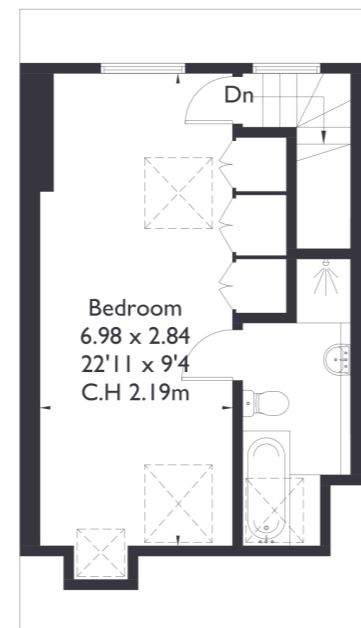
Approximate Floor Area = 113.2 sq m / 1218 sq ft



Ground Floor



First Floor



Second Floor



3 BEDROOM HOUSE

Manor Road, W13

£800,000

Welcome to this property in West Ealing. This home includes three double bedrooms, two modern bathrooms, and a separate reception room suitable for both entertaining and relaxing. The kitchen and dining area opens onto a landscaped garden, providing a pleasant space for indoor and outdoor living.

FEATURES

- Chain Free
- Three Bedrooms
- Two Bathrooms
- Separate Kitchen/Dining
- West Ealing Station (Elizabeth Line)
- Potential To Extend (STPP)
- EPC Rating C



3 BEDROOM HOUSE

Manor Road, W13

Located just a minute's walk from West Ealing Station on the Elizabeth Line, this property offers convenient access to central London.

The property features charming bay windows that fill the house with natural light, complemented by original flooring and details throughout. The bedrooms are generously sized, including a spacious en-suite bedroom on the top floor. EPC Rating C.

