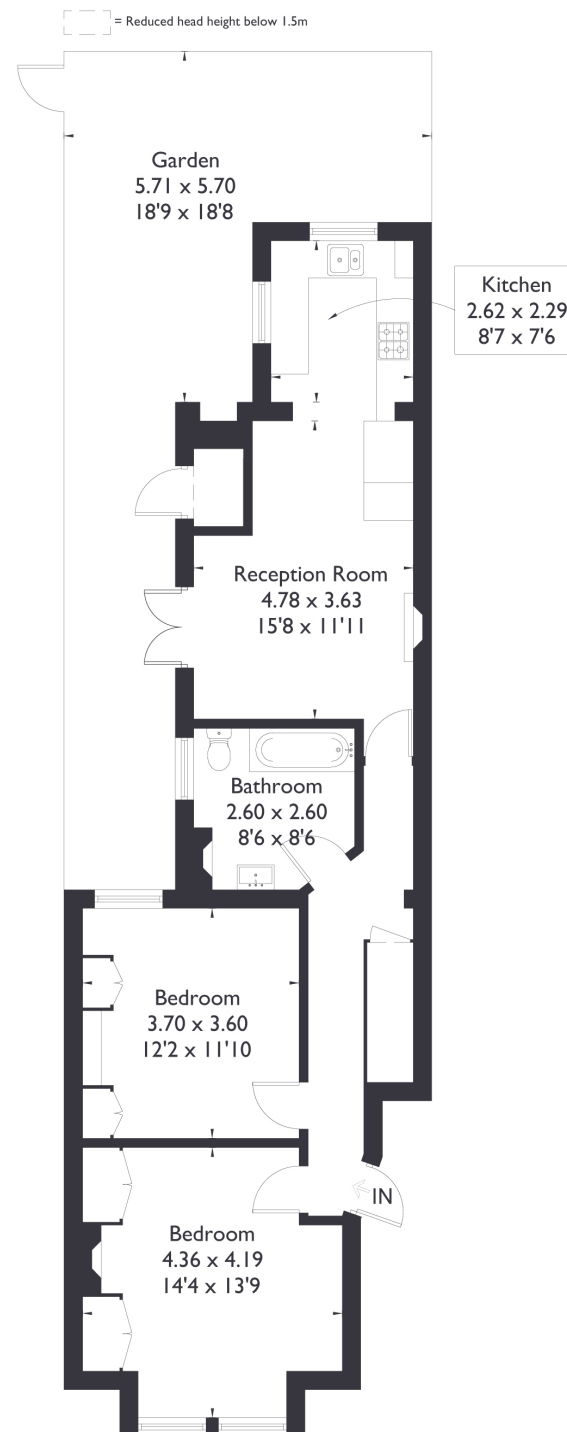


Seaford Road, W13

Approximate Floor Area = 70 sq m / 753 sq ft



Ground Floor



2 BEDROOM FLAT

Seaford Road, W13

£599,950

Welcome to this beautifully presented two-bedroom, one-bathroom ground-floor garden flat, situated on a highly sought-after road. The property offers two spacious double bedrooms and a large family bathroom.

Towards the rear, you'll find a stylish open-plan kitchen and living area, seamlessly extending into a gorgeous east-facing garden, perfect for enjoying the morning sun.

FEATURES

- Two Bedrooms
- One Bathroom
- Open Plan Kitchen & Living
- Northfield Amenities
- West Ealing Station/Northfields Station
- St John's Primary School
- EPC Rating D



2 BEDROOM FLAT

Seaford Road, W13

Ideally positioned between West Ealing and Northfields, the flat benefits from excellent transport links, with both the Elizabeth Line and Piccadilly Line nearby.

Additionally, it falls within the catchment area for St. John's Primary School, making it a fantastic choice for families. EPC Rating D.

