



Darkes Lane, Potters Bar, Hertfordshire, EN6

£139,950

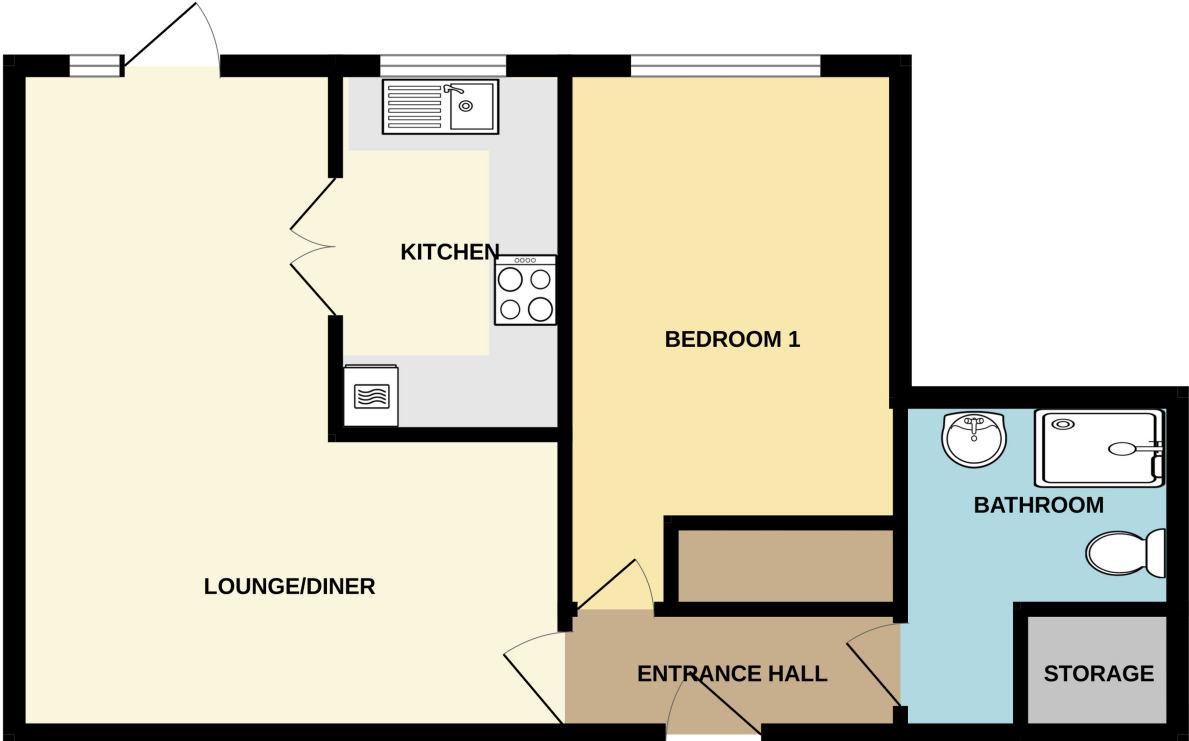
- RETIREMENT FLAT
- GROUND FLOOR WITH ACCESS TO GARDEN
- RESIDENTS LOUNGE
- WALKING DISTANCE TO SHOPS
- ONE BEDROOM APARTMENT
- COMMUNAL GARDEN
- RESIDENTS LAUNDRY ROOM

Darkes Lane, Potters Bar, Hertfordshire, . EN6

£139,950 Leasehold

This one bedroom ground floor retirement apartment is conveniently located for access to Darkes Lane amenities including Sainsburys Supermarket, local restaurants and shops. The property benefits from a lounge/diner with access to communal gardens, separate kitchen, double bedroom, and shower room. There are also many communal benefits within this development including a communal lounge, mature communal gardens, residents laundry room, overnight guest suite, plus parking for residents & visitors. Offered chain free, internal viewing is highly recommended.

GROUND FLOOR
469 sq.ft. (43.5 sq.m.) approx.



TOTAL FLOOR AREA : 469 sq.ft. (43.5 sq.m.) approx.
Whilst every attempt has been made to ensure the accuracy of the floorplan contained here, measurements of doors, windows, rooms and any other items are approximate and no responsibility is taken for any error, omission or mis-statement. This plan is for illustrative purposes only and should be used as such by any prospective purchaser. The services, systems and appliances shown have not been tested and no guarantee as to their operability or efficiency can be given.
Made with Metropix ©2024

Energy Efficiency Rating		
	Current	Potential
Very energy efficient - lower running costs		
(92+) A		
(81-91) B		
(69-80) C	78	83
(55-68) D		
(39-54) E		
(21-38) F		
(1-20) G		
Not energy efficient - higher running costs		
England, Scotland & Wales	EU Directive 2002/91/EC	

