

23 Ingram Close

HAWKINGE, Folkestone
CT18 7QQ

£250,000

DRAFT DETAILS... FOR SALE WITH BURNAP + ABEL... £250,000-£260,000...
Burnap + Abel are delighted to offer this two bedroom terraced house situated in a quiet location in Hawkinge. The property is in our opinion in superb decorative order and offers a lounge/diner, kitchen, two bedrooms and family bathroom. Additional benefits include a large rear garden, garage and off road parking for two cars. For your chance to view call sole agent Burnap + Abel now on 01303 258590.



Entrance Hall

Lounge/Dining Room

13' 4" x 13' 1" (4.06m x 3.99m)

Kitchen

9' 9" x 6' 9" (2.97m x 2.06m)

First Floor Landing

Bedroom One

11' 5" x 11' 1" (3.48m x 3.38m)

Bedroom Two

11' 8" x 7' 6" (3.56m x 2.29m)

Bathroom

7' 10" x 5' 4" (2.39m x 1.63m)

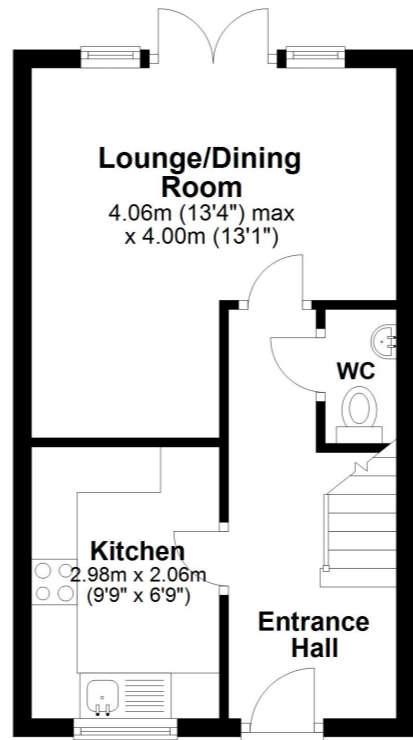
Rear Garden

Garage

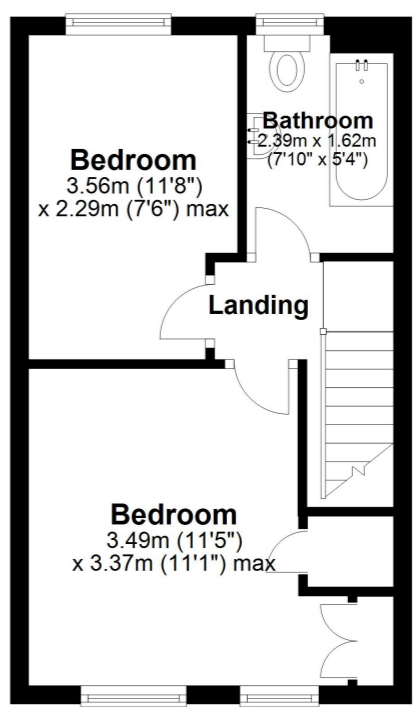
18' 4" x 8' 5" (5.59m x 2.57m)

Off Road Parking

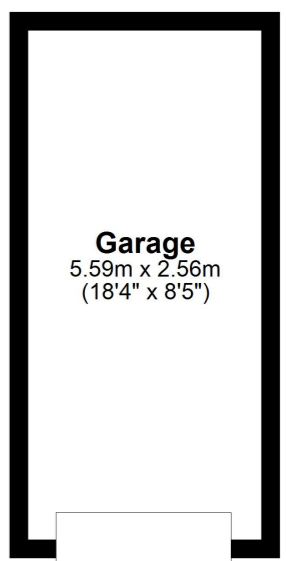
Ground Floor
Approx. 28.6 sq. metres (307.4 sq. feet)



First Floor
Approx. 27.5 sq. metres (296.1 sq. feet)



Outbuilding
Approx. 14.3 sq. metres (154.0 sq. feet)



Total area: approx. 70.4 sq. metres (757.5 sq. feet)

Whilst every attempt has been made to ensure the accuracy of the floor plan contained here, measurements of doors, windows, rooms and any other items are approximate and no responsibility is taken for any error, omission or mis-statement. This plan is for illustrative purposes only and should be used as such by any prospective purchaser. Plan produced using PlanUp.

