



Harrison Close

Harrison Close | Hitchin | Hertfordshire | SG4 9SG

www.stonegate-estates.co.uk



HARRISON CLOSE

Property Description

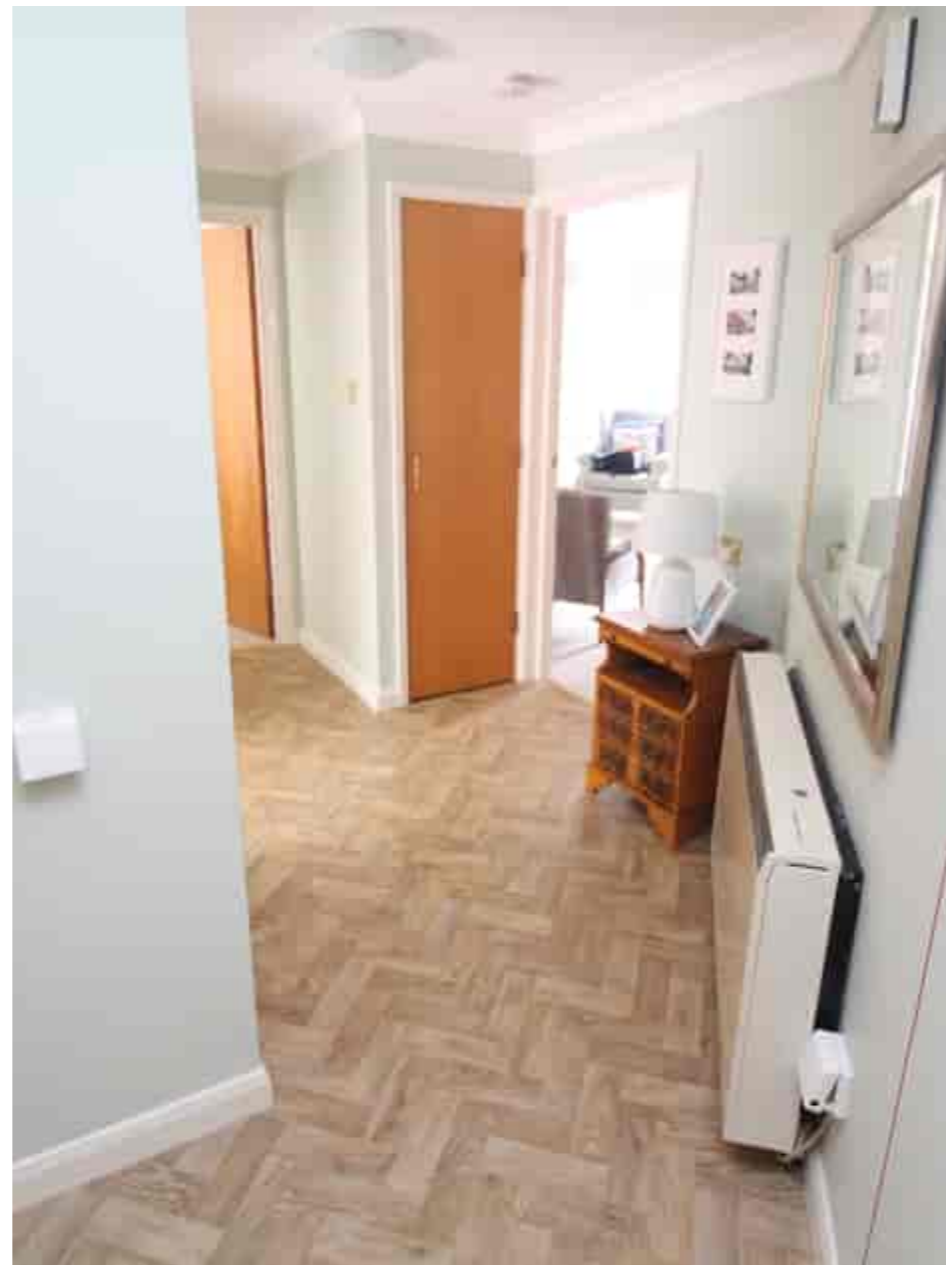
We are delighted to offer for sale this beautifully presented and much improved two bedroomed retirement apartment situated within the ever popular Harrison Court development.

Ideally situated within walking distance of the town centre and the train station, this light and airy apartment has been vastly improved with a new shower room, a fitted kitchen breakfast room including a washing machine and dishwasher, an extended 125 year lease and has been decorated throughout.

The development has a communal lounge and hairdressing, residents gardens and parking, an on site development manager and laundry facilities and a lift to all floors.

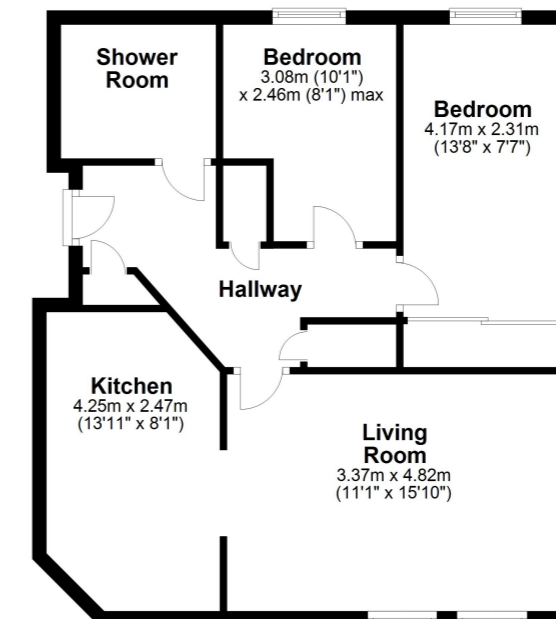
Hitchin town provides a broad range of shops and a regular traditional market, together with a good selection of restaurants, bars and pubs within its historic centre. The town also provides a swimming centre, theatres and a library, whilst the commuter is served by the main line railway station (Kings Cross - 30 minutes) and direct links to the A1(M).

£295,000 Leasehold



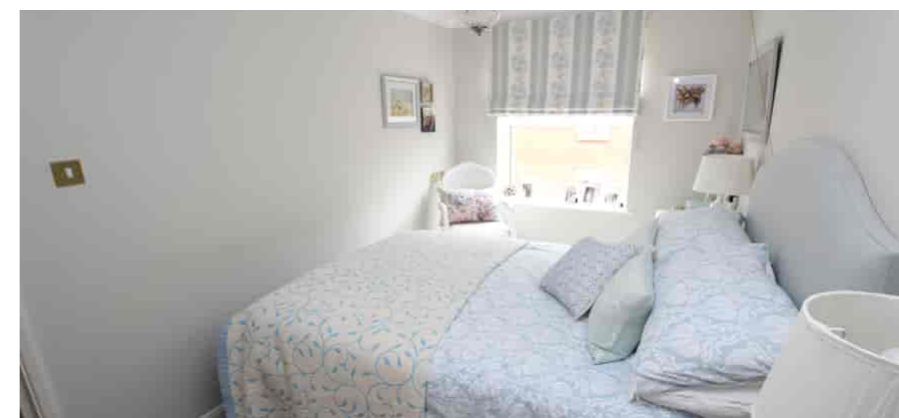


Ground Floor



All measurements shown are approximate and for guidance only. Garages and workshops are not included in any gross floor areas unless integral to the main building where they will be included.
Plan produced using PlanUp.

Harrison Court, Hitchin



- Two Bedroom Retirement Apartment
- Town Centre Location
- Residents Lounge
- Development Manager on Site
- Communal Gardens
- Beautiful Finish Throughout
- New Shower Room
- Fitted Kitchen with Appliances
- New 125 Year Lease

EPC Rating:

Stonegate Estate Agents

01462 438979

sales@stonegate-estates.co.uk | www.stonegate-estates.co.uk

