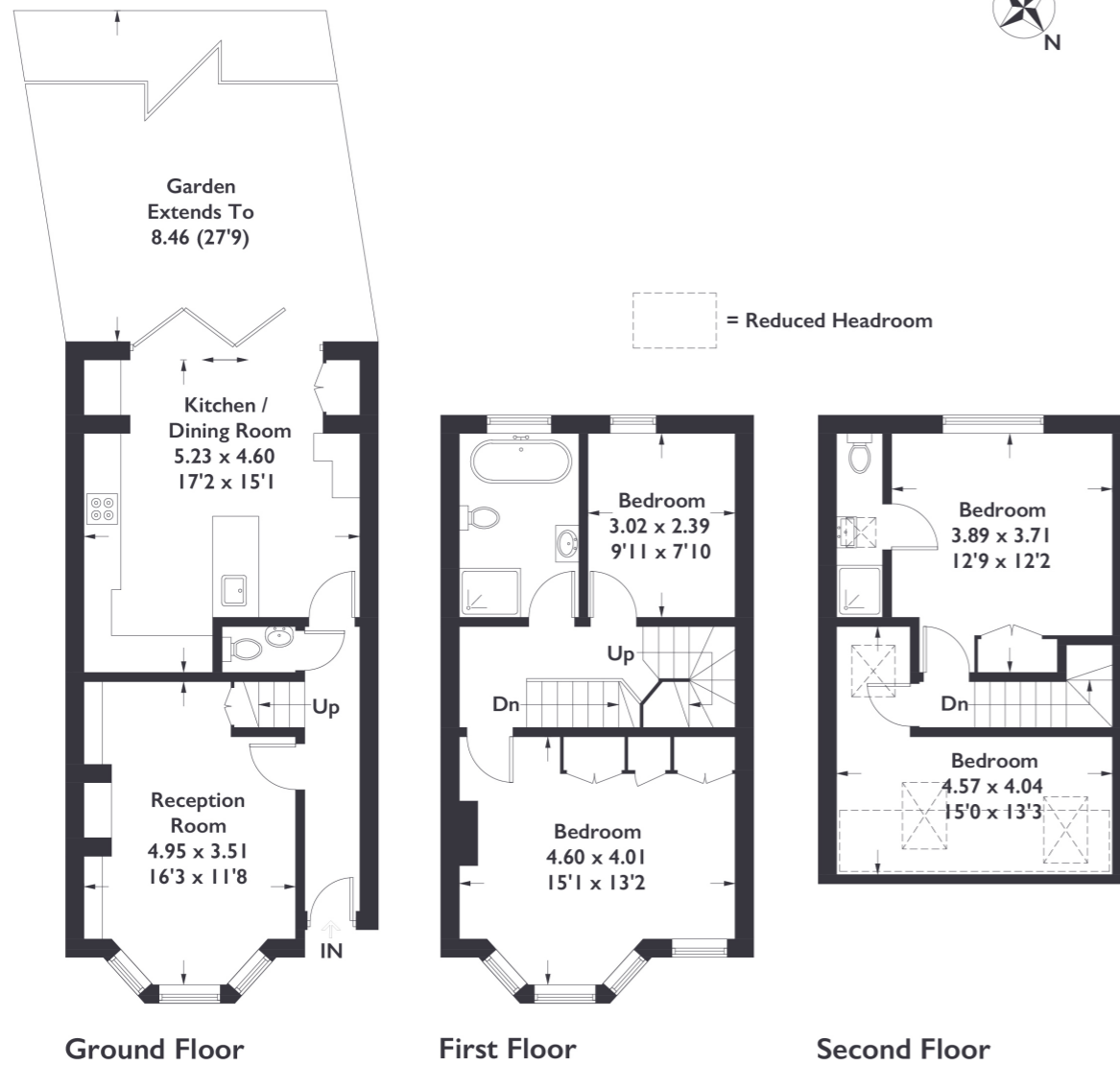


Seaford Road, W13

Approximate Gross Internal Area = 118.6 sq m / 1277 sq ft
(Including Reduced Headroom)



Measured in accordance with RICS Code of Measuring Practice. To be used for identification and guidance purposes only. Whilst every care is taken in the preparation of this plan, please check all dimensions, shapes and compass bearings before making any decisions reliant upon them. www.london58.com © 2023 hello@london58.com



4 BEDROOM HOUSE

Seaford Road, W13

£875,000

Discover the timeless charm of this Edwardian house, perfectly situated between Northfields amenities and the convenience of West Ealing Station, offering access to the Elizabeth Line. With four bedrooms and two and a half baths, including a downstairs W/C, this residence seamlessly blends classic elegance with modern functionality.

FEATURES

- Freehold
- Four Bedrooms
- Two Bathrooms
- Downstairs W/C
- Open Plan Kitchen/Dining
- Northfields Station
- Oaklands Primary School
- EPC Rating D



4 BEDROOM HOUSE

Seaford Road, W13

The open-plan kitchen, dining, and living area, adorned with bifold doors leading to the garden, creates a perfect space for both entertaining and everyday living.

Spread across three floors, the property also features a separate reception room, providing versatility in its layout. The interior of this Edwardian gem is a visual delight, boasting an elegant design that includes a captivating exposed brick family bathroom, serving as a showstopper alongside the stunning master bedroom.

The property's potential for interior customization is boundless, providing a canvas for your creative aspirations. With a solid foundation and a prime location, this Edwardian house offers a unique opportunity to create a truly exceptional home.

EPC Rating D.

