



Interested in this property

Further information and image gallery available on our website at beebysproperties.co.uk.
Simply contact us for further information or to arrange a viewing:

Tel 01778 369369
sales@beebysproperties.co.uk



The small print

Viewing note
If you wish to view this property then please contact Beebys Properties Ltd directly as viewings are strictly by appointment only.

Important notice
In accordance with the Property Misdescriptions Act (1991) these sales particulars are to be taken as a general description of the property and are not part of any offer or contract. All text, measurements and photos are for guidance only and should not be relied upon as fact. None of the services or appliances have been tested by Beebys Properties Ltd. It is the duty of the purchaser to carry out any inspections, surveys and checks of the property. The copyright of all details, photographs and floor plans are exclusive to Beebys Properties Ltd.

Haydock Park Drive, Bourne, PE10
£1,650 pcm

EPC Rating: B

			
x4	x1	x3	x1

Tel 01778 369369 enquiries@beebysproperties.co.uk
<http://www.beebysproperties.co.uk>

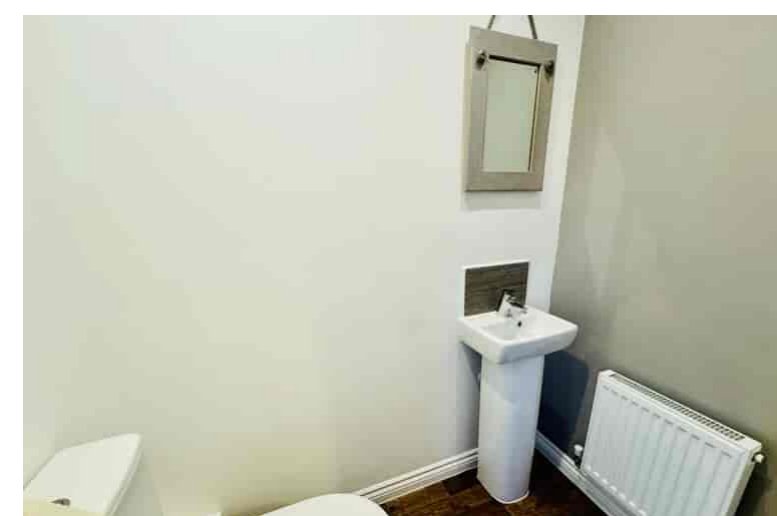


Property photographs

Description

****FOUR BEDROOM DETACHED HOME ON ELSEA PARK WITH CONVERTED GARAGE!**** Beebys Property Services are delighted to offer to let this well sized four bedroom detached home. The property briefly comprises of Entrance Hall, Downstairs WC, Open Plan Kitchen/Diner with integrated white goods and Utility Room off Kitchen, large Lounge with French Doors leading to the recently re-turfed rear garden. The Garden has a built in seating area and offers access to the converted garage, which can be used as a study/gym and also storage. Upstairs offers four Double Bedrooms with En-Suite Shower Room to Master and Family Bathroom. The property does have multiple storage cupboards. Available IMMEDIATELY with an EPC rating of B, Council Tax Band 'D'. Call now to arrange your viewing. Pets and Zero Deposit Scheme may be available.

Room dimensions



Energy Performance Certificate

