

The Grove

Warminster, BA12 8QL

COOPER
AND
TANNER



£220,000 Freehold

🛏️ 2 🛋️ 1 🚿 1 EPC C

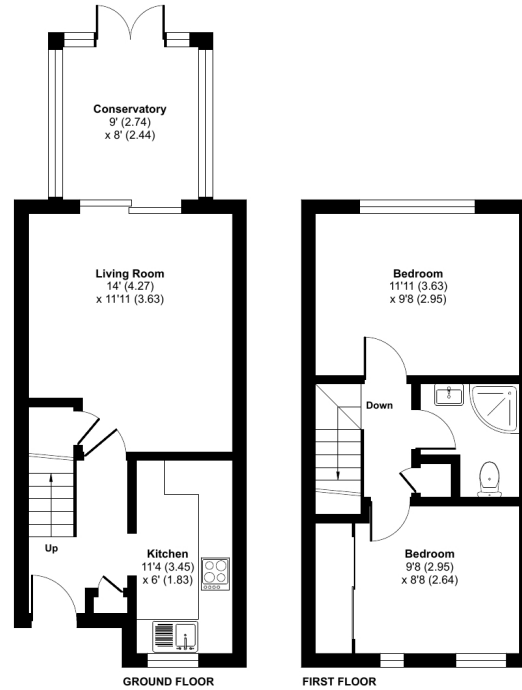
Description

This two bedroom mid terraced house is set close to the town centre and is perfect for a first time buyer or would suit an investor. It is a good size and has a conservatory with a really pretty enclosed rear garden, there is allocated parking for two cars. The property is offered for sale with NO ONWARD CHAIN. Comprising entrance hall, fitted kitchen with a range of wall and base units. A sitting room leading to a conservatory with doors to the rear garden. Upstairs there are two double bedrooms and a family bathroom. Outside there is an enclosed rear garden and is easy maintainable with raised containers full of plants and shrubs, artificial grass, patio area. At the bottom is a garden shed and gated access leading the private car park.



The Grove, Warminster, BA12

Approximate Area = 684 sq ft / 63.5 sq m
For identification only - Not to scale



Floor plan produced in accordance with RICS Property Measurement Standards incorporating International Property Measurement Standards (IPMS2 Residential). © richcom 2024. Produced for Cooper and Tanner. REF: 1097904



Features

- Mid terrace home
- Kitchen
- Sitting room
- Conservatory
- Two Bedrooms
- Bathroom
- Enclosed rear garden
- Two parking spaces
- No onward chain

Local Information

- Council Tax Band B
- Tenure Freehold
- EPC Rating C

WARMINSTER OFFICE

Telephone 01985 215579

48-50, Market Place, Warminster, Wiltshire BA12 9AN

warminster@cooperandtanner.co.uk

**COOPER
AND
TANNER**

Important Notice: These particulars are set out as a general outline only for the guidance of intended purchasers and do not constitute, nor constitute part of, an offer or contract. All descriptions, dimensions, reference to condition and necessary permissions for use and occupation, warranties and other details are given without responsibility and any intending purchasers should not rely on the m as statements or representations of fact but must satisfy themselves by inspection or otherwise as to the correctness of each of them.

