



Compton Road, Kensal Green. NW10

- 2 double bedrooms with built in storage
- Private garden with hot tub
- Excellent condition- ready to move in to
- Contemporary kitchen with integrated appliances
- Stylish bathroom with modern fittings
- Integrated speaker system in bathroom



PROPERTY DESCRIPTION

Harris & Company are pleased to present this beautiful 2-bedroom garden flat, ideally located on the quiet and well-connected Compton Road in NW10. Boasting a private garden with a luxury hot tub, this home offers the perfect blend of modern living and outdoor relaxation.

The property is ready to move in to, containing 2 double bedrooms, a contemporary kitchen with integrated appliances and stylish bathroom with modern fittings.

Located just a short walk to Kensal Green (Bakerloo & Overground) and Kensal Rise stations, offering direct links into Central London. Enjoy the nearby cafés, shops, parks, and the vibrant community feel of Kensal Rise.

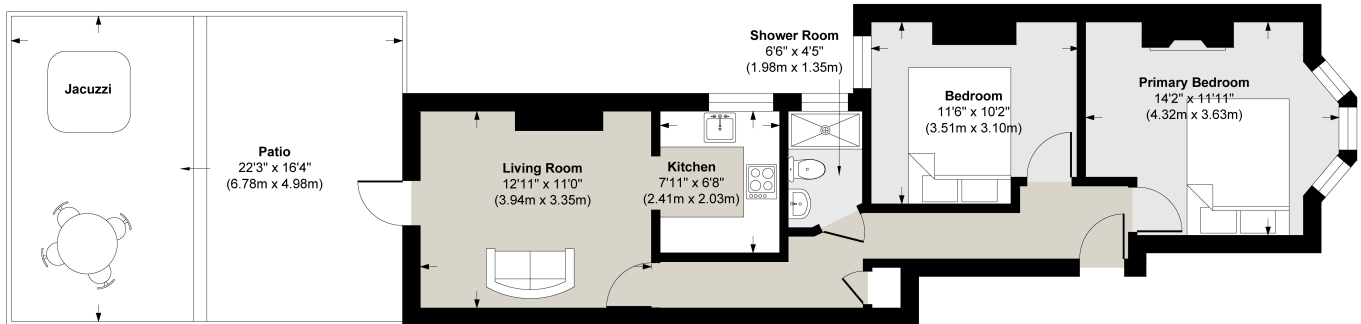
Viewing by appointment only. Sole Agent.

Sold on long lease. Viewing by appointment only. Sole Agent.



FLOORPLAN & EPC

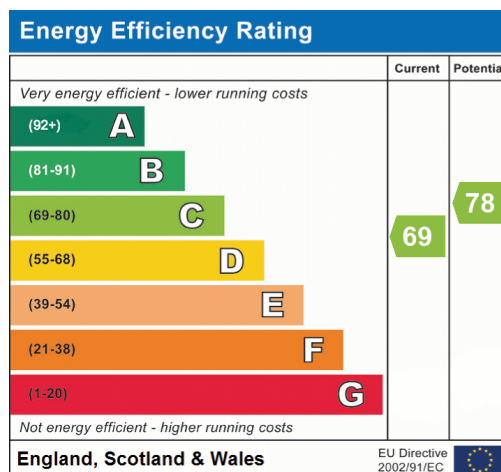
12 Compton Road NW10



Floor Plan
Approximate Floor Area
599 sq. ft
(55.64 sq. m)

This floor plan was produced for Harrys & Company by Visual Imagery. Website:
www.visualimagery.co.uk

While we strive for accuracy in all our floor plans, please note that measurements of doors, windows, and rooms are approximate. Visual Imagery accepts no liability for any errors, omissions, or inaccuracies presented. These plans are intended for illustrative purposes only and should be used as such by any prospective purchaser or lessee. No guarantee is given regarding the gross internal floor area quoted on this plan, and any figures provided should be considered initial estimates only



Harris & Company Estate Agents
104-106, Chamberlayne Road, London, NW10 3JN
020 8969 1333
info@harrisandcompany.co.uk