



Hawthorn Close, Bicknacre, Chelmsford, CM3 4HD

 2  4  2

£550,000 Freehold

ACCOMMODATION

This brand new semi detached family home comprises an entrance hall with Amtico flooring, cloakroom with contemporary white suite and Amtico flooring, living room with feature bay window, fitted kitchen/dining room with high quality shaker style units, Quartz work surfaces, built in appliances, Amtico flooring and double doors that overlook and lead to the rear garden, utility room. To the first floor there is a good size landing, master bedroom with fitted wardrobe and en suite shower room with contemporary white suite, Hansgrohe taps and showers and Amtico flooring, three further bedrooms and a family bathroom with contemporary white suite Hansgrohe taps and showers and Amtico flooring. Externally the property benefits from a driveway providing off road parking for two vehicles, electric car charger and south facing rear garden with paved patio and turfed garden.

LOCATION

Poised right on the edge of the peaceful village of Bicknacre, surrounded by glorious Essex countryside, Hawthorn Close is a superb development of beautifully designed new homes. Cocooned within thick hedges, and with access to open green space at the rear of the site, it offers a choice of two, three and four bedroom homes.

An ancient archway, all that remains of the 12th century Bicknacre Priory... a petting farm, home to pygmy goats, alpacas and wallabies... two popular local hosteleries, The Brewers Arms and The White Swan, both serving excellent food... a stunning 19 acre woodland nature reserve, Thriftwood, where wildflowers and bird life flourish: the quiet village of Bicknacre is an ideal place to set down roots.

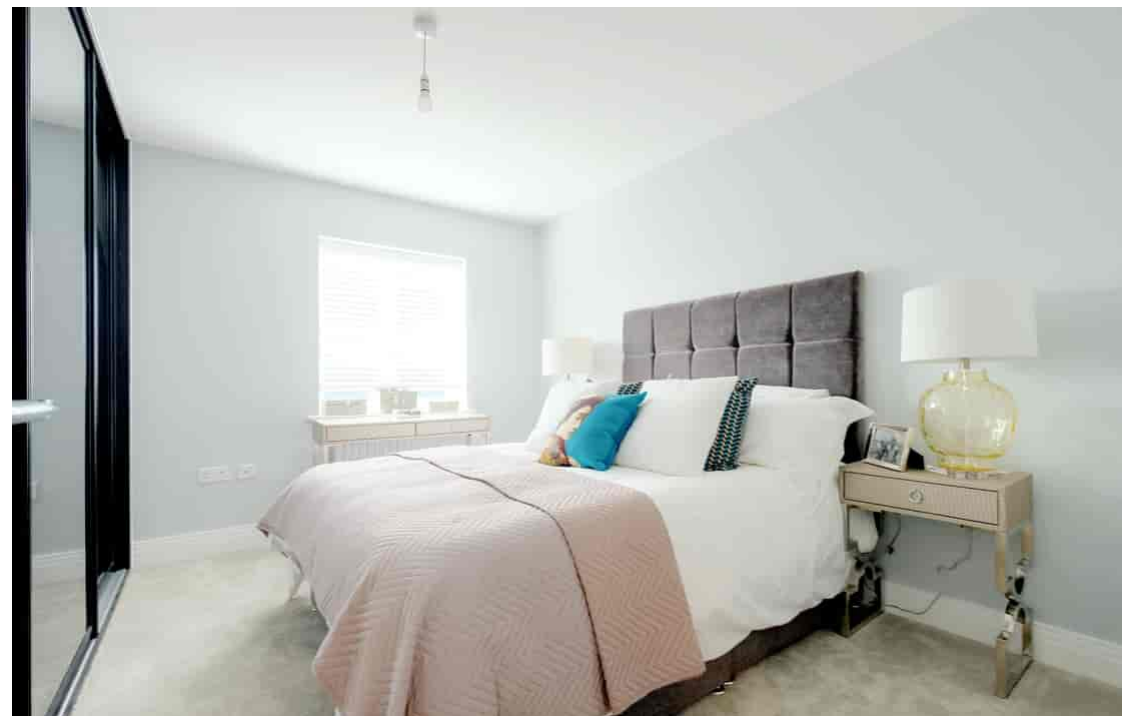
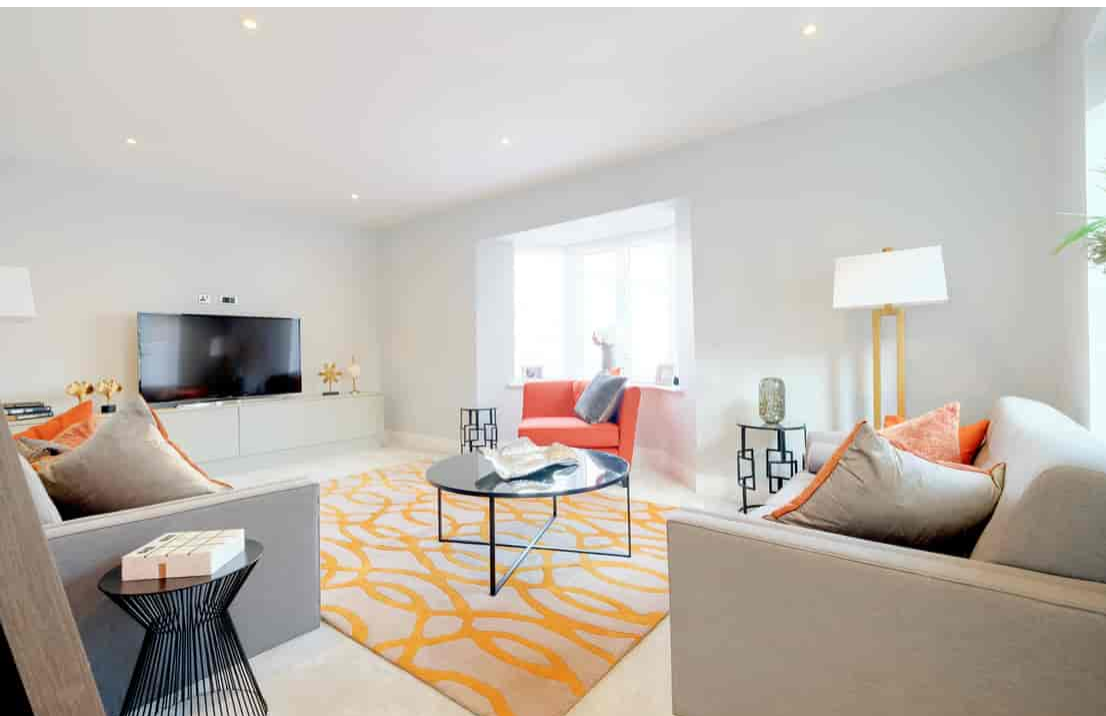
Everyday essentials are available in the local convenience store and post office, with nearby White Elm Garden Centre offering fresh fruit and vegetables, a thriving family butcher and a raft of other stores. Just a couple of miles away, Danbury boasts a wider range of shops and services, while Sainsbury's and Asda can be found at nearby South Woodham Ferrers. The area hosts a wide range of excellent restaurants and gastro-pubs – Bicknacre itself offers Chinese and Italian cuisine – and fresh seafood is the order of the day in the historic waterside market town of Maldon.

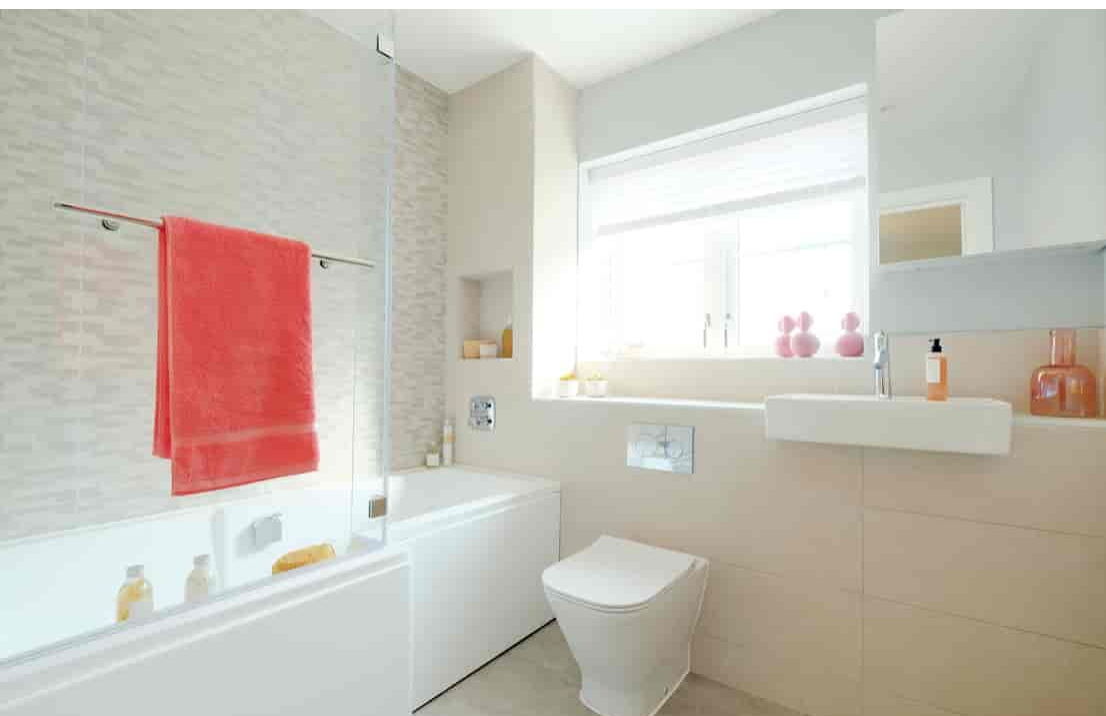
Just 8 miles down the road, the vibrant city of Chelmsford is packed with opportunities for sophisticated shopping, dining and entertainment. Two cinemas, a choice of theatres, galleries, museums and arts venues – not forgetting the city's own month-long festival – offer a range of things to see and do, while a number of sports and leisure centres provide access to all manner of activities. Football, rugby, cricket and tennis are available in Bicknacre's neighbouring towns and villages, while golfers will be in their element, with Bunsay Downs Golf Club and the charming Warren Estate both on the doorstep.

Nearby Hanningfield Waterside Park is widely considered one of the best trout fisheries in the UK. Of course, this is just one of the many nature reserves, parks and National Trust woodland and heathland available to explore in the area: Danbury Commons and Danbury Country Park are just a few miles away, with Nash Wood and Backwarden nature reserves offering alternatives to Bicknacre's own Thriftwood and Priory Fields. RHS Hyde Hall is just 2.5 miles away, while the Stowe Maries Great War Museum and Call of the Wild Zoo offer great days out for all the family. In addition, this is wine country, with Danbury Ridge Wine Estate on the doorstep and New Hall Vineyard open for tours and tastings.

On a more practical note, Bicknacre has its own pre-school and primary school, rated Good by Ofsted, with a further choice in both Danbury and South Woodham Ferrers. There are also a number of schools for older children, the closest being the Sandon School and William de Ferrers School, both Good,* while Chelmsford and the surrounding towns all offer more choice.

- **Brand New Semi Detached Home**
- **Living Room With Bay Window**
- **South Facing Rear Garden**
- **High Specification Finish**
- **Super Efficient New Home With EPC Rating B**
- **Kitchen/Dining Room With Shaker Style Units, Quartz Work Surface & Built In Appliances**
- **Master Bedroom With Fitted Wardrobe & En Suite**
- **Driveway With Parking For Three Vehicles**
- **Family Bathroom With Contemporary White Suite**
- **EV Car Charging Point**

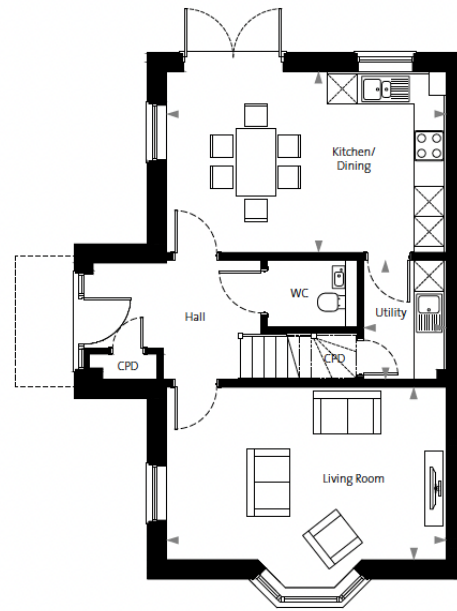




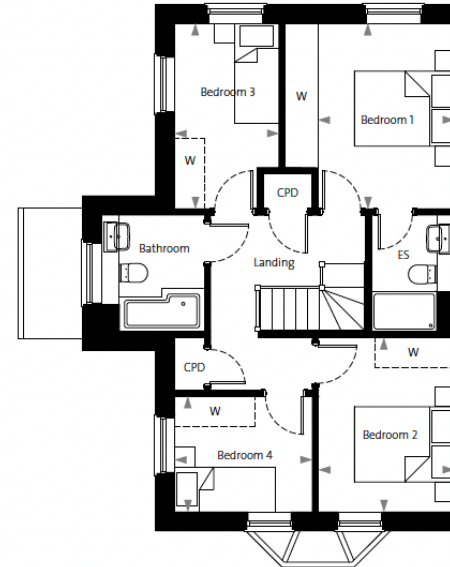


	metric (mm)	imperial
Kitchen/Dining	5590 x 3618	18' 4" x 11' 10"
Utility	2385 x 1660	7' 10" x 5' 5"
Living Room	5590 x 3450	18' 4" x 11' 4"
Bedroom 1	3706 x 2734	12' 2" x 9' 0"
Bedroom 2	3481 x 2721	11' 5" x 8' 11"
Bedroom 3 (max)	3706 x 2087	12' 2" x 6' 10"
Bedroom 4	2750 x 2310	9' 0" x 7' 7"

Ground Floor



First Floor



*GIA - Gross internal area. Computer generated illustration is indicative.

▲ Indicates where dimensions have been taken from. Plans indicative only. Dimensions are intended for guidance only and may vary by + or - 76mm/3". Please refer to sales representative for final details.
W denotes wardrobe. ----- denotes wardrobe as an optional extra. CPD denotes cupboard. ES denotes en-suite.

10, Maldon Road,
Danbury, Essex, CM3 4QQ
Telephone: 01245 222856
Website: www.bondresidential.co.uk

Consumer Protection from Unfair Trading Regulations 2008 and the Business Protection from Misleading Marketing Regulations 2008. Bond Residential have made every effort to ensure that consumers and/or businesses are treated fairly and provided with accurate material information as required by law. We have not tested any apparatus, equipment, fixture, fitting or any services and as such are unable to verify they are in working order, fit for their purpose, or within the ownership of the seller or landlord. Neither have we been able to check the legal documentation to verify the legal status of the property. We therefore advise potential buyers or tenants to verify these matters with their own solicitors or other advisers.

