



**Jetty Road  
Warden  
Sheerness  
Kent  
ME12 4PS**

**Offers In Excess Of £352,000**

**bettermove**

# Jetty Road Sheerness

Bettermove are proud to present this 3 bedroom semi-detached house in Sheerness.

The property benefits from double glazing, gas central heating throughout and has off street parking available via the front of the house.

The council tax band is C.

The interior of this beautifully presented property comprises a fitted kitchen, 2 bedrooms and the family bathroom on the ground floor. The first floor consists of the spacious living room, 1 bedroom and en-suite bathroom. The exterior boasts a private rear garden, perfect for enjoying the summer months.

Located in the popular town of Warden, the property is close to a range of amenities, including shops, supermarkets, restaurants and pubs. Excellent transport connections can be found from A249, Sheerness-on-Sea railway station and many local bus routes.

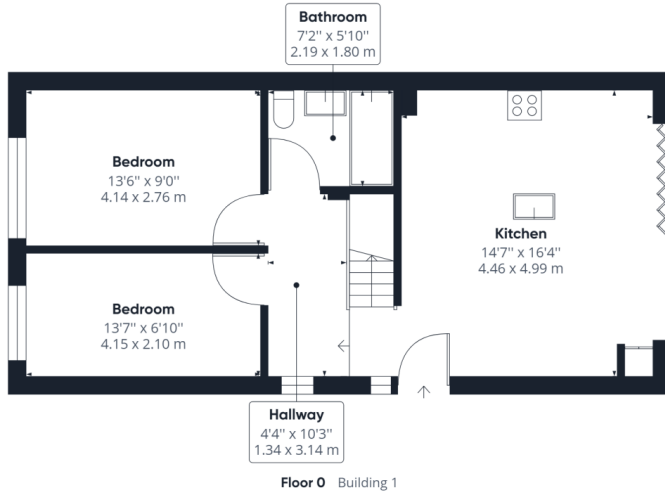
This exciting opportunity should not be missed! All enquiries can be made through Bettermove on 0330 004 0050.

You can secure the purchase today by paying an exclusivity fee of £1,000 which gives you the rights to purchase within a given timeframe.

Paying this fee ensures that the seller takes their property off the market and reserves it exclusively for you, therefore eliminating the risk of gazumping and aborted costs.

The exclusivity fee is returned to you upon successful completion of the property.





**Approximate total area<sup>(1)</sup>**

1028.07 ft<sup>2</sup>  
95.51 m<sup>2</sup>

**Reduced headroom**

36.90 ft<sup>2</sup>  
3.43 m<sup>2</sup>

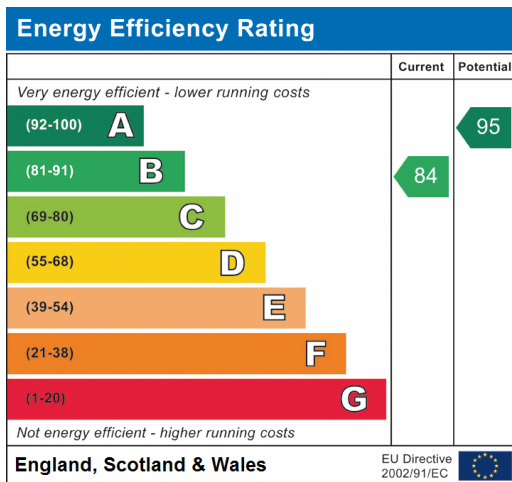


(1) Excluding balconies and terraces

Reduced headroom  
(below 1.5m/4.92ft)

While every attempt has been made to ensure accuracy, all measurements are approximate, not to scale. This floor plan is for illustrative purposes only.

**GIRAFFE360**





20-22 Bridge End, Leeds, LS1 4DJ  
t: 0330 004 0050 e: hello@bettermove.co.uk  
[www.bettermove.co.uk](http://www.bettermove.co.uk)