







A deceptively spacious detached house situated at the end of a cul de sac in the village of Lyminge. Updated by the current owners. The accommodation comprises: ground floor – entrance porch, WC, living room open to a dining room, garden room, family room/office with bay window and modern kitchen. First floor – landing, three bedrooms, en suite and main bathroom. Outside: driveway for two vehicles, frontage and bin store to the side. Enclosed rear garden, mainly laid to lawn and patio with fixed cover. Gas central heating. EPC RATING = D

**Guide Price £450,000**

**Tenure** Freehold

**Property Type** Detached House

**Receptions** 4

**Bedrooms** 3

**Bathrooms** 2

**Parking** Driveway for two cars

**Heating** Gas

**EPC Rating** D

**Council Tax** Band D

Folkestone & Hythe District Council



**Situation**

The property is nestled in the popular cul de sac 'Mount Pleasant Close' The village of Lyminge is nestled in the spectacular North downs it has a wonderful semi-rural feel, with an abundance of beautiful walks nearby and benefiting from the amenities the village has to offer. There is a Post Office & Convenience Shop, Hairdressers, two Doctors surgeries, Chemist and Primary School. The village offers various clubs and societies and there are good bus links to both Canterbury and Folkestone. Lyminge is a thriving community with lots of activities for all ages. In the nearby town of Folkestone there are mainline railway stations with High Speed services to London.

**The accommodation comprises**

**Ground floor**

**Entrance porch**

**WC**

**Living room**

14' 2" x 11' 1" (4.32m x 3.38m)

**Dining room**

10' 11" x 8' 3" (3.33m x 2.51m)

**Garden room**

10' 8" x 8' 11" (3.25m x 2.72m)

**Kitchen**

17' 11" x 9' 10" (5.46m x 3.00m)

**Office/family room**

18' 11" x 8' 0" (5.77m x 2.44m)

**First floor**

**Landing**





### Bedroom one

13' 7" x 9' 6" (4.14m x 2.90m)

### Bedroom two

14' 8" x 9' 10" (4.47m x 3.00m)

### En suite shower room

### Bedroom three

9' 11" x 8' 0" (3.02m x 2.44m)

### Bathroom

### Outside

Frontage and side bin store

Driveway

Enclosed rear garden







Approximate Gross Internal Area (Including Low Ceiling) = 113 sq m / 1214 sq ft

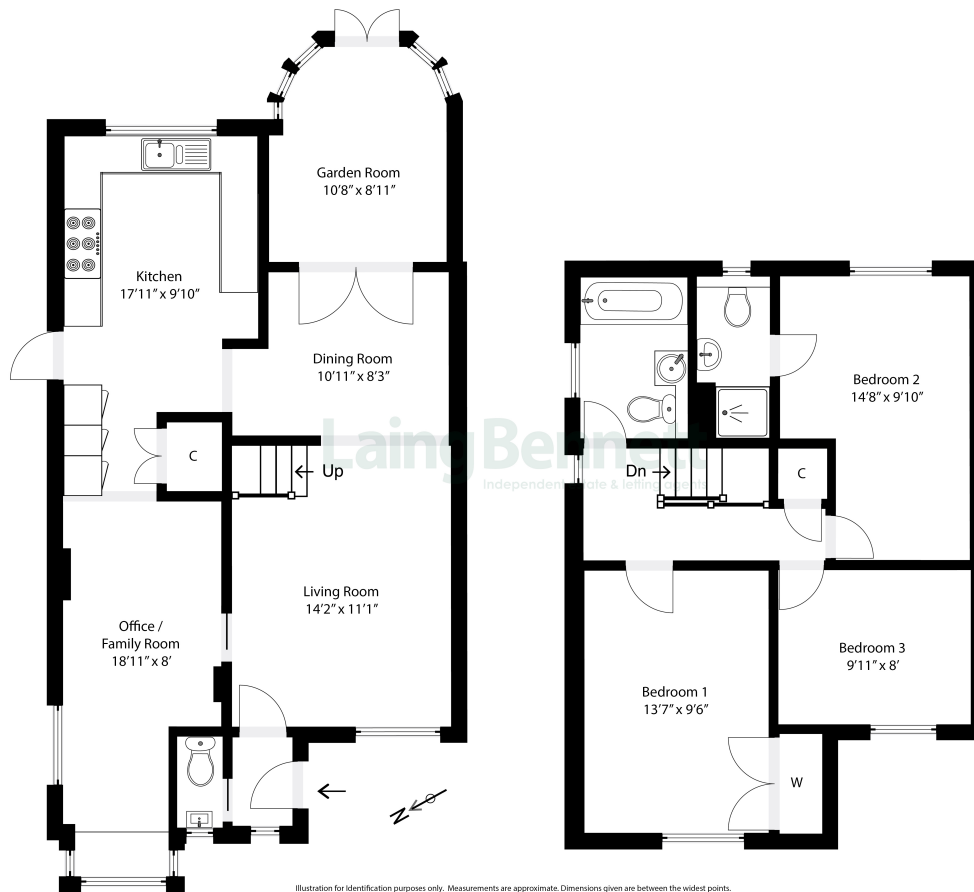


Illustration for identification purposes only. Measurements are approximate. Dimensions given are between the widest points. Not to scale. Outbuildings are not shown in actual location.



Need to book a viewing?

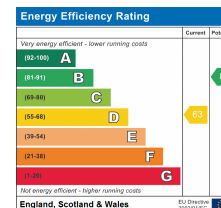
If you would like to book a viewing please contact our office on 01303 863393 or email [sales@laingbennett.co.uk](mailto:sales@laingbennett.co.uk)

See all our properties at



[www.laingbennett.co.uk](http://www.laingbennett.co.uk)

The Estate Office  
8 Station Road  
Lyminge  
Folkestone  
Kent  
CT18 8HP



These property details are intended to give a fair description and give guidance to prospective Purchaser/Tenant. They do not constitute an offer or contract of Sale/Tenancy and all measurements are approximate. While every care has been taken in the preparation of these details neither Laing Bennett Ltd nor the Vendor/ Landlord accept any liability for any statement contained herein. Laing Bennett Ltd has not tested any services, appliances, equipment or facilities, and nothing in these details should be deemed to be a statement that they are in good working order or that the property is in good structural condition or otherwise. We advise all applicants to commission the appropriate investigations before Exchange of Contracts/entering into a Tenancy Agreement. It should not be assumed that any contents/furnishing, furniture etc. photographed are included in the Sale/Tenancy, nor that the property remains as displayed in the photographs. No person in the employment of Laing Bennett Ltd has authority to make or give any representation or warranty whatever in relation to this property.