

Freehold £450,000

Quilter Road, Orpington, London BR5 4GA



- Two Storey, Three Bedroom, Mid Terrace House
- Spacious Kitchen/Dining Room
- Bathroom plus Downstairs WC
- South/South-West Facing Rear Garden
- Approx. 1014 Sqft Gross Internal Area
- Large Main Bedroom
- Very Good Energy Efficiency Rating
- Driveway Parking Space

GENERAL DESCRIPTION

This modern, mid-terrace property has a spacious kitchen/dining room at the front, a downstairs cloakroom/WC and a full-width reception room which opens onto a thirty-six-foot, south/south-west-facing rear garden. Upstairs, on the first floor, is a large main bedroom, a second good-sized double bedroom, a smaller third bedroom and the bathroom. Demanding insulation standards, modern double glazing and gas central heating make for a very good energy-efficiency rating. The house comes with a driveway parking space and Orpington Station, for rail services into London Bridge/Waterloo East/Cannon Street/Charing Cross/Victoria, can also be easily reached via bus or by brief bike ride.

Tenure: Freehold.

Estate Charge: £25.00 per month (subject to annual review).

Council Tax: Band D, London Borough of Bromley.

Please Note: This property is currently part-owned by Clarion Housing Association but is offered as a 100% open-market sale. Upon completion, the freehold title would transfer to the buyer.

This property is offered for sale in the condition seen. As a general rule, fitted domestic appliances are included in the sale; non-fitted appliances are not. If you require confirmation, you must request this in writing from Urban Moves. The information in this document supersedes any information given verbally either in person or by telephone.

DIMENSIONS

GROUND FLOOR

Entrance Hall

Kitchen / Dining Room

18' 3" x 8' 6" (5.56m x 2.59m)

W.C.

8' 6" x 4' 3" (2.59m x 1.30m)

Reception Room

15' 6" x 10' 3" (4.72m x 3.12m)

Garden

approximately 17' 3" x 36' 6" (5.26m x 11.13m)

FIRST FLOOR

Landing

Bedroom 1

15' 7" x 10' 4" (4.75m x 3.15m)

Bathroom

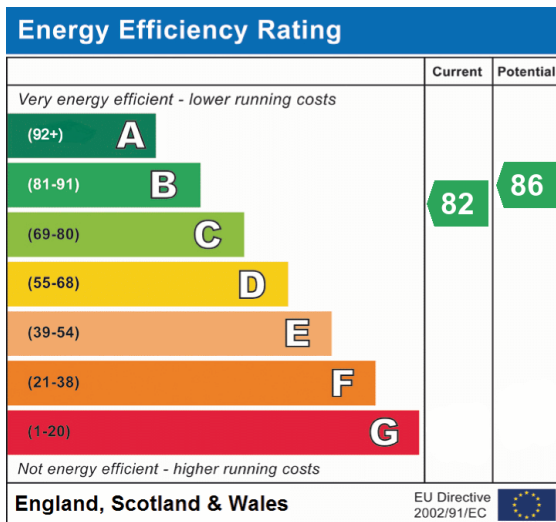
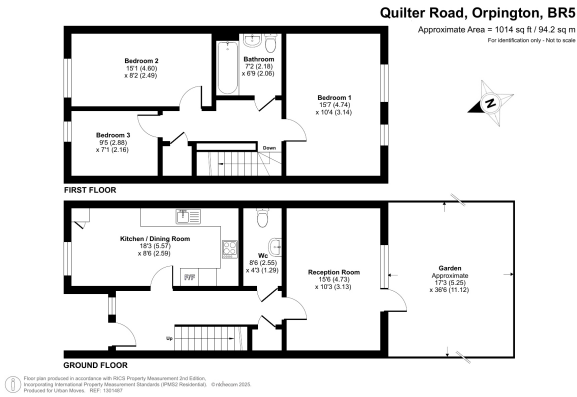
7' 2" x 6' 9" (2.18m x 2.06m)

Bedroom 2

15' 1" x 8' 2" (4.60m x 2.49m)

Bedroom 3

9' 5" x 7' 1" (2.87m x 2.16m)



All content shown is to be used as a general guideline for the property. None of the contents of this document constitute part of an offer or contract. All measurements, photographs, floor-plans and data provided are only a guideline and should not be relied upon.