

Ebberley Lawn, Barnstaple
£775 pcm

John
Smale & Co.

Chartered Surveyors | Residential & Commercial Consultants



- 3 Bed Maisonette
- Spacious Accommodation
- Large Lounge

- Garage
- Communal Gardens
- Long Let

2 Ebberley Lawn, Barnstaple, Devon, EX32 7DH

Spacious 3 bed maisonette situated in this popular area with easy access to the town centre. Benefits from a garage and communal gardens. Large spacious living area, exceptionally large lounge, fitted kitchen, ensuite master bedroom, family bathroom and two further double bedrooms. Good quality accommodation. Gas central heating, long let.

Communal Entrance

Doorway to Flat

Stairs to Half Landing

Exit to Fire Escape and Small Outside Terrace

Up to:-

Lounge

6.41m x 4.67m (21' 0" x 15' 4")

Kitchen

2.53m x 4.23m (8' 4" x 13' 11")

Fitted Kitchen, electric oven and hob.

Bedroom

2.90m x 4.79m (9' 6" x 15' 9")

Ensuite Bathroom

With Shower over, WC and sink

Upstairs to Landing

Bathroom

Bath, WC, walk in shower and sink

Bedroom 2

4.30m x 4.23m (14' 1" x 13' 11")

Bedroom 3

3.78m x 4.35m (12' 5" x 14' 3")

Outside

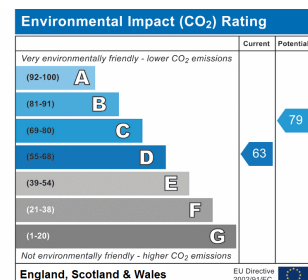
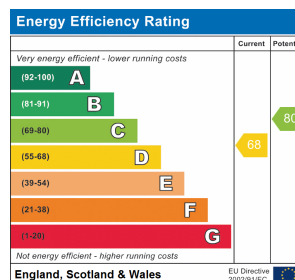
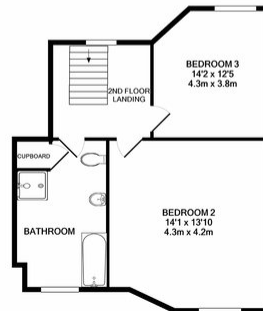
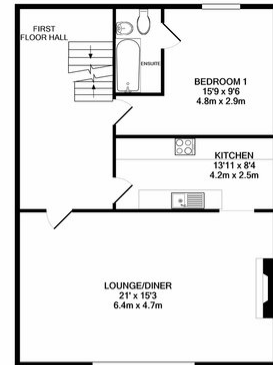
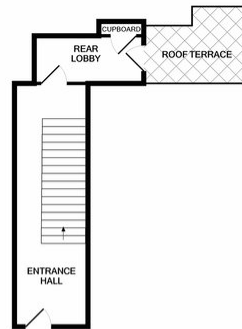
Garage En Bloc - communal central gardens.

Services

Mains connected, gas, electric and water.

Directions

From Bear St, head toward Goodleigh Cross lights and turn right into Ebberley Lawn. The property is on the left. First floor apartment.



At John Smale & Co we don't just sell houses! ...

Contact us now for information on all of our other services including Residential and Commercial Lettings, Property Management, Commercial Property Sales, Probate Valuations, Independent Financial Advice, Energy Performance Certificates, Auctions and New Homes.

These particulars have been prepared for guidance only. We have not carried out a detailed survey, not tested the services, appliances or specific fittings. Floor plans are not drawn to scale unless stated, measurements and distances are approximate only. Do not rely on them for carpets and furnishings. Photographs are not necessarily current and you should not assume that contents shown are included in the sale.

Email: lettings@johnsmale.com Website: www.johnsmale.com

5 Cross Street Barnstaple EX31 1BA

Offices also @ London (Mayfair Office)

Tel: 01271 329345