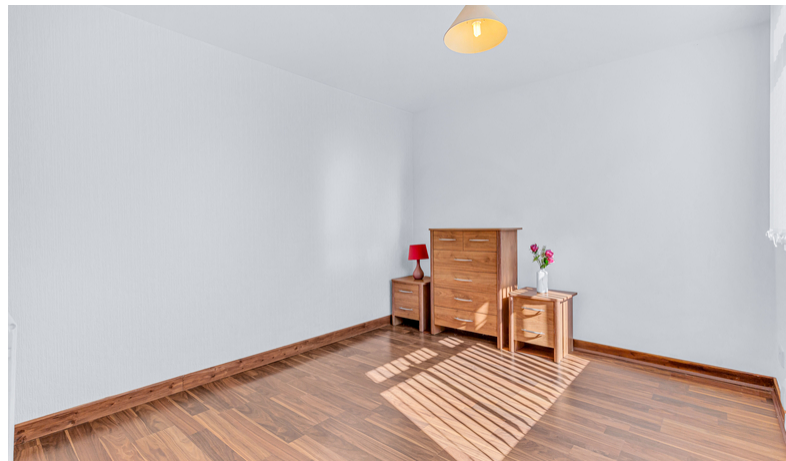




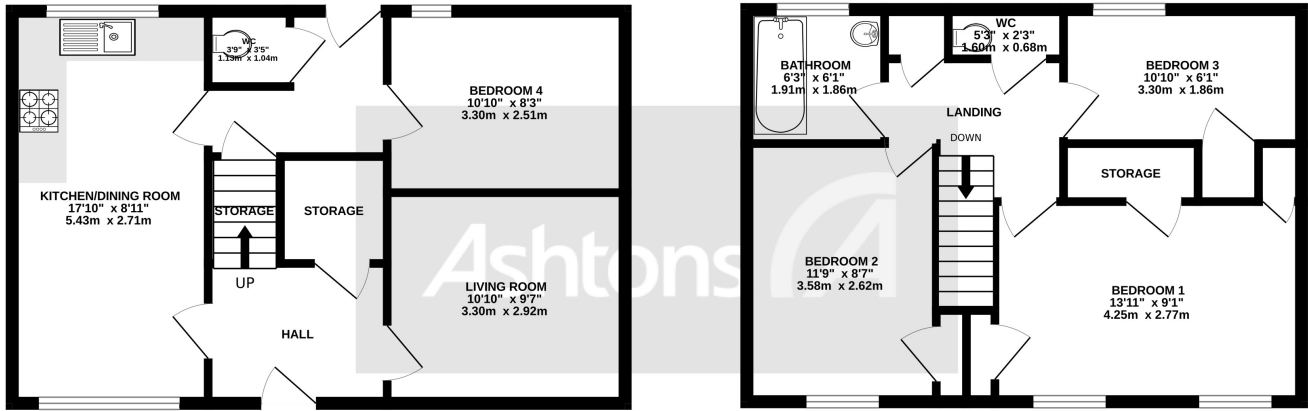
*Penfolds, Halton Brook, Runcorn. WA7.  
£165,000*

4 Spacious Bedrooms | Recently refurbished | Modern decor | Gardens front and rear |



GROUND FLOOR  
496 sq.ft. (46.1 sq.m.) approx.

1ST FLOOR  
449 sq.ft. (41.7 sq.m.) approx.



TOTAL FLOOR AREA : 946 sq.ft. (87.8 sq.m.) approx.

Whilst every attempt has been made to ensure the accuracy of the floorplan contained here, measurements of doors, windows, rooms and any other items are approximate and no responsibility is taken for any error, omission or mis-statement. This plan is for illustrative purposes only and should be used as such by any prospective purchaser. The services, systems and appliances shown have not been tested and no guarantee as to their operability or efficiency can be given.  
Made with Metropix ©2023

This stunning recently renovated 4 bedroom mews is the perfect place to call home. With a spacious kitchen diner, cozy living room, bathroom, and a garage, this property offers everything you need for comfortable living.

#### Key Features:

**4 Bedrooms:** This property features 4 spacious bedrooms, providing ample space for family and guests.

**Kitchen Diner:** The modern kitchen diner is the heart of the home, offering a stylish and functional space to cook and dine.

**Living Room:** The inviting living room is perfect for relaxation and entertainment, with plenty of space for furniture and a cozy atmosphere.

**1 Bathroom:** The well-appointed bathroom features modern fixtures and fittings, providing a tranquil space to unwind and refresh.

**Garage:** The property includes a garage, offering secure parking and additional storage space.



### Contact your local office to arrange a viewing:

**Padgate:** 01925 479334  
**Great Sankey:** 01925 454300  
**Winwick:** 01925 232146  
**Stockton Heath:** 01925 453400  
**St.Helens:** 01744 754120  
**Wigan:** 01942 498862  
**Culcheth:** 01925 764744  
**Ashton-In-Makerfield:** 01942 364446  
**Newton-Le-Willows:** 01925 907770  
**Commercial Office:** 01925 907709  
**Lettings Head Office:** 01925 873533  
**Financial Services:** 01925 221234

#### Viewing Arrangements

Viewing is strictly by appointment only through Ashtons Estate Agency.

#### Disclaimer Property Details

These particulars, whilst being believed to be accurate are set out as a general outline only for guidance and do not constitute any part of an offer or contract. Intending purchasers should not rely on them as statements of representation of fact, but must satisfy themselves by inspection or otherwise as to their accuracy. We have not carried out a detailed survey nor tested the services, appliances and specific furnishings. The measurements given are approximate. No person in this firm's employment has the authority to make or give any representation or warranty in respect of the property.

All details, photographs and floorplans are the copyright of Ashtons Estate Agency.



*How much you can borrow?*  
Speak to a mortgage expert in your local office.

**Ashtons Financial Services**

Ashtons.net rightmove

PrimeLocation.com Zoopla.co.uk

**Ashtons**