

FOR SALE

£350,000 Freehold



Davis & Gibbs

Fairfax Court, Dartford. DA1

ABOUT THE PROPERTY

This charming chain free two-bedroom terraced house in Dartford offers a cosy and inviting living space ideal for small families or first-time buyers. Located in a quiet, well-established residential area, the house combines traditional features with modern updates.

Upon entry, you are greeted by a light-filled open plan living room, which boasts a neutral colour palette and classic wooden flooring. The room offers ample space for both lounging and dining, making it a perfect hub for family activities or entertaining guests.

The kitchen is well-equipped with contemporary appliances, sleek cabinetry, and plenty of counter space for meal preparation. It also provides access to a low-maintenance garden, ideal for enjoying outdoor meals or relaxing in the sun.

Upstairs, you'll find two comfortable bedrooms. The master bedroom is spacious, with views overlooking the rear garden, while the second bedroom is perfect for a child's room, guest room, or home office. Both rooms feature soft carpeting and ample natural light.

A family bathroom with modern fixtures completes the upstairs level, offering both a bath and overhead shower, with clean, neutral tiling.

The house benefits from good storage options throughout, as well as a convenient location near local amenities, schools, and public transport links, including Dartford train station, which offers direct access to London Bridge. The property also has on-street parking, making it a practical choice for commuters.

With its blend of character, comfort, and convenience, this terraced house provides an excellent opportunity for those seeking a peaceful yet accessible home in Dartford.

FEATURES

- 1990s Terraced House
- Open Plan Lounge and Kitchen
- Freehold House
- Chain Free
- Private Garden
- Two Double Bedrooms One With Storage
- EPC - C - 75
- Council Tax - Dartford - Band C



Ground Floor

Lounge

8.36m x 3.78m (27' 5" x 12' 5") This light-filled lounge offers a versatile space with room for both relaxing and dining. The open layout includes a designated area for a dining table, perfect for family meals or entertaining. Built-in storage along one wall provides clever and convenient solutions for keeping the space tidy and organized. Large doors open directly to the garden, creating a seamless flow between indoor and outdoor living, ideal for enjoying fresh air or al fresco dining. The neutral decor and ample natural light make this lounge a comfortable and inviting space for everyday living.

Kitchen

8.36m x 3.78m (27' 5" x 12' 5") This modern kitchen boasts a sleek, contemporary design, finished to the highest standard. With smooth, high-gloss cabinetry and stylish, minimalist fixtures, the space exudes both elegance and functionality. The kitchen offers plenty of counter space, providing ample room for meal preparation and cooking. Cleverly designed storage solutions ensure everything has its place, while integrated appliances keep the space looking tidy and streamlined. Perfect for both everyday use and entertaining, this kitchen combines practicality with sophisticated style.

Garden

6.40m x 4.14m (21' 0" x 13' 7") This charming garden features a stylish decking area, perfect for outdoor relaxation or dining. Designed with low-maintenance in mind, the garden requires minimal upkeep while still offering a beautiful space to enjoy. A designated area for plants allows you to add a touch of greenery, with enough space for shrubs, flowers, or even small trees. The combination of decking and carefully planned planting areas creates a tranquil and functional outdoor retreat, ideal for unwinding or entertaining.

First Floor

Bedroom 1

3.78m x 3m (12' 5" x 9' 10") This spacious double bedroom is both comfortable and peaceful, featuring soft, plush carpeting that adds warmth and coziness to the space. Large windows offer a lovely view of the garden, bringing in plenty of natural light and creating a serene atmosphere. The room provides ample space for a bed, along with additional furniture, making it an ideal retreat for relaxation. The tranquil garden outlook enhances the room's peaceful vibe, making it the perfect place to unwind after a long day.

Bedroom 2

3.78m x 2.36m (12' 5" x 7' 9") This cozy double bedroom is designed for comfort and convenience, featuring soft carpet that adds warmth and a sense of coziness. The room is thoughtfully equipped with a built-in storage cupboard, providing ample space to keep your belongings neatly organized and out of sight. With plenty of room for a double bed and additional furniture, this bedroom offers a peaceful and practical retreat. Its simple, uncluttered design ensures a restful environment.

Bathroom

This modern bathroom features a sleek, high-end finish with minimalist design elements. The space is dominated by clean lines and a neutral color palette of soft grays, whites, and chrome accents. A spacious, frameless glass shower cubicle takes center stage, offering a luxurious walk-in experience with high-tech rainfall and handheld showerheads. The vanity is streamlined with a large mirror, under-mount sink, and plenty of storage in soft-close drawers.

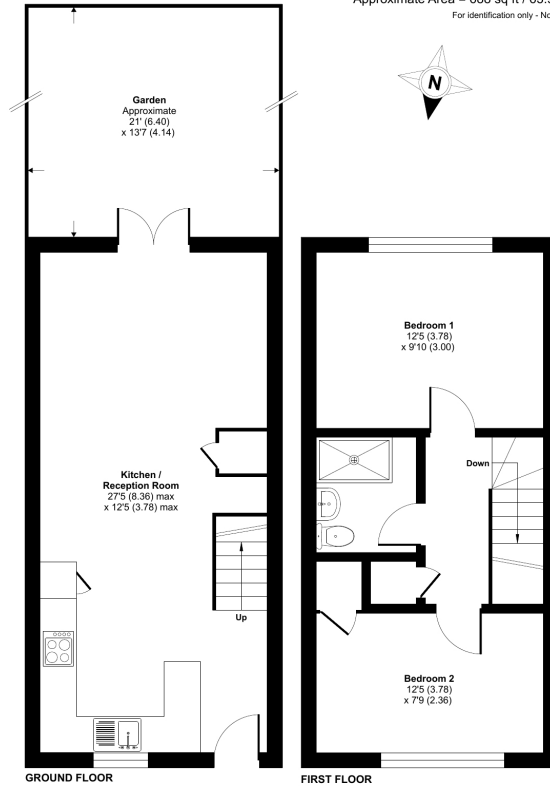


FLOORPLAN

Fairfax Court, Dartford, DA1

Approximate Area = 688 sq ft / 63.9 sq m

For identification only - Not to scale



Floor plan produced in accordance with RICS Property Measurement 2nd Edition, incorporating International Property Measurement Standards (IPMS2 Residential). © nichecom 2024. Produced for Davis & Gibbs. REF: 1211514

EPC

