

2 Bedroom(s), Detached Bungalow, Freehold

Nether Cantley Lane, Nether Cantley, Doncaster.



- 3D Virtual Tour Available
- Spacious Plot with Sizeable Driveway and Rear Garden
- Open Plan Lounge, Dining Area and Sun Room
- Contemporary Family Bathroom
- Private Location

- Well Presented Two Bedroom Detached Bungalow
- Greenhouse, Outbuilding and Sheds
- Modern Kitchen and Utility Room
- Garage
- W/C

£450,000
For Sale

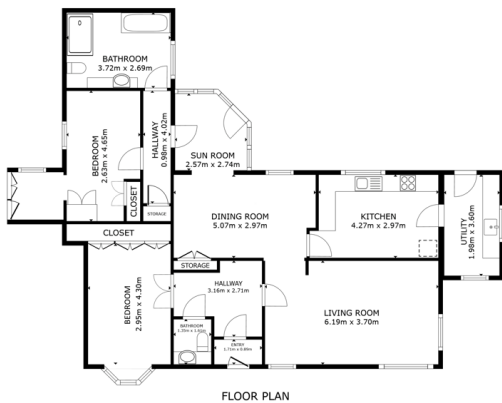
Book your viewing today Tel: 01302 247754

Owner's View

Set on a sizeable and impressive plot in a desirable area of Doncaster, this beautifully maintained 2-bedroom detached bungalow on Nether Cantley Lane offers spacious and flexible living both inside and out. The property sits proudly behind a private driveway with ample parking and an attached garage, while the standout feature is undoubtedly the generous rear garden—fully enclosed and thoughtfully landscaped, complete with greenhouse and useful garden sheds. Inside, the accommodation flows effortlessly, featuring a spacious open-plan layout that combines the lounge, dining area, and a light-filled sun room—perfect for relaxing or entertaining. The modern kitchen is well-appointed and leads conveniently to a separate utility room. The home boasts two well-proportioned bedrooms and a sleek, contemporary family bathroom, offering comfort and practicality in equal measure. Situated in a quiet yet convenient location, with excellent access to local amenities and transport links, this charming bungalow is a rare find.

Internals

Floor Plan



GROSS INTERNAL AREA
FLOOR PLAN 127.3 sq ft
TOTAL: 127.3 sq ft
SIZES AND DIMENSIONS ARE APPROXIMATE, ACTUAL MAY VARY.

Matterport

Kitchen



Open-Plan Lounge, Dining Room and Sun Room





Utility



Bedroom



Bedroom



Family Bathroom



W/C



Externals

Front Aspect



Rear Garden



Property Information

Council Tax Band - E

Utilities - Mains Gas, Mains Electricity, Mains Water

Water Meter - Yes

Tenure - Freehold

Solar Panels - No

Space Heating System - Gas Boiler with radiators

Approximate Heating System Installation Date -

Water Heating System - Gas boiler (Combi)



Approximate Water Heating Installation Date -

Boiler Location - Utility Room

Approximate Electrical System Installation Date -

Permanent Loft Ladder - No

Loft Insulation - Yes

Loft Boarded out – No

Whilst every effort is made to ensure that the information contained in these particulars is reliable, they do not constitute or form part of an offer or any contract. The Property Hive accept no liability for the accuracy of the contents, and therefore they should be independently verified by prospective buyers or tenants before agreeing an offer. All measurements provided are approximate and should be verified before exchange of contracts. No appliances, fixtures or fittings have been tested and should be checked by the buyer before exchange of contracts to ensure they are in good working order.

Energy Performance Certificate

