

Fiveways Close

Cheddar, BS27 3DS

COOPER
AND
TANNER



£315,000 Freehold

Formerly the show home is this immaculately presented two bedroom property set only a short distance from the centre of the village. The property benefits from beautifully landscaped gardens, a garage, three reception rooms and off street parking.

Fiveways Close

Cheddar

BS27 3DS

 2  3  1 EPC D

£315,000 Freehold

OUTSIDE

The front of the property benefits from an off street parking space with access into the house and into the garage, there is also a well kept front lawn which is enclosed by a low level hedge. The garage is accessed through an up and over door with electric and lighting and currently has shelving at the rear. The rear garden is beautifully landscaped and is mostly laid to artificial grass. There are currently a selection of potted plants and a couple of patio areas which are perfect for enjoying the sun at different parts of the day.

LOCATION

Situated at the foot of the Mendip Hills, Cheddar is an ideal base from which to enjoy wonderful country walks. Road links are excellent, with easy access to the A38. Bristol is only 30 minutes away and the M5 motorway approximately 20 minutes. Bristol International Airport is 25 minutes away. Please note, the village is not under the flight path therefore aircraft noise is not a consideration for residents. Local attractions include Cheddar Gorge and caves, Wookey Hole Caves, Glastonbury Tor and the seaside at Weston Super Mare.

The village itself has a wide range of shops to cater for everyday needs, bank, and a Post Office as well as doctor and dentist surgeries. There is a three-tier school system where children up to the age of nine attend the First School, then move on to Fairlands Middle School and finally on to The Kings of Wessex Academy and all these schools are within the village. The Kings Fitness and Leisure Centre adjoining the Kings of Wessex Academy offers an extensive range of activities for all the family and has an indoor heated swimming pool. There are also a number of village sports clubs and societies to cater for everyone.

TENURE

Freehold

HEATING

Gas central heating

SERVICES

All mains services

LOCAL AUTHORITY

Somerset County Council

EPC RATING

D

VIEWINGS

Strictly by appointment only- Please call Cooper and Tanner

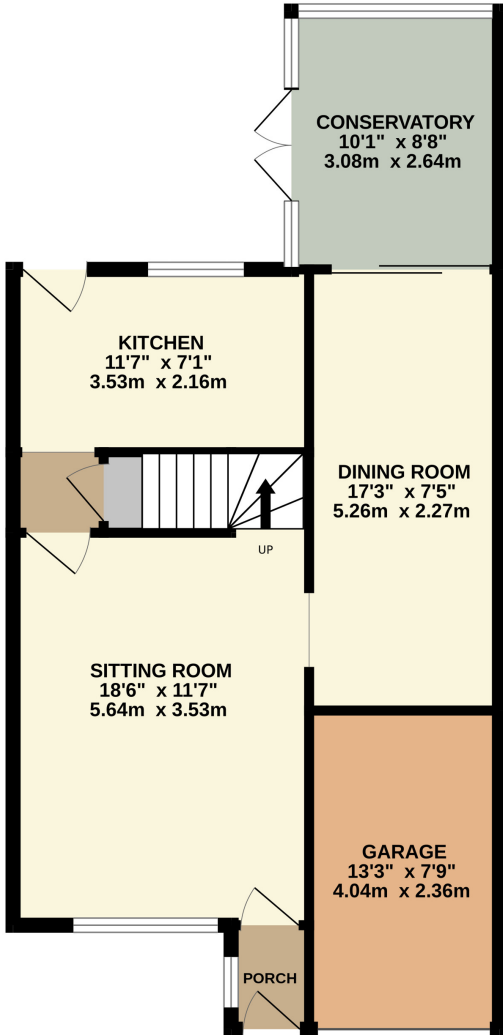
DIRECTIONS

From the market cross in Cheddar, going towards Axbridge on the A371, you will proceed along Wideatts Road. Fiveways Close is the third turning on the left, before you reach Upper New Road. The property is found on the left turn on the left.

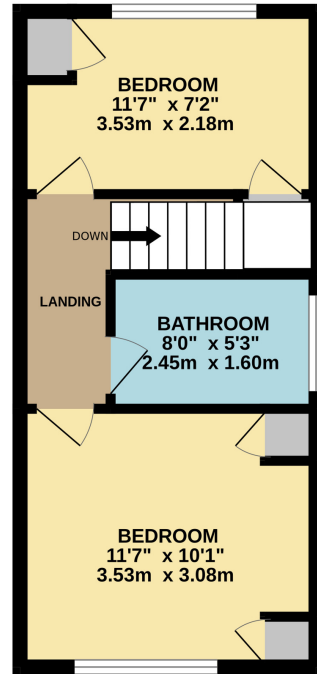




GROUND FLOOR
613 sq.ft. (57.0 sq.m.) approx.



1ST FLOOR
297 sq.ft. (27.6 sq.m.) approx.



TOTAL FLOOR AREA : 910 sq.ft. (84.6 sq.m.) approx.

Whilst every attempt has been made to ensure the accuracy of the floorplan contained here, measurements of doors, windows, rooms and any other items are approximate and no responsibility is taken for any error, omission or mis-statement. This plan is for illustrative purposes only and should be used as such by any prospective purchaser. The services, systems and appliances shown have not been tested and no guarantee as to their operability or efficiency can be given.
Made with Metroptx ©2023

CHEDDAR OFFICE

Telephone 01934 740055

Unit 2, Union Street, Cheddar, Somerset BS27 3NA

cheddar@cooperandtanner.co.uk

COOPER
AND
TANNER

Important Notice: These particulars are set out as a general outline only for the guidance of intended purchasers and do not constitute, nor constitute part of, an offer or contract. All descriptions, dimensions, reference to condition and necessary permissions for use and occupation, warranties and other details are given without responsibility and any intending purchasers should not rely on the m as statements or rep representations of fact but must satisfy themselves by inspection or otherwise as to the correctness of each of them.

