

3 Snowdrop Walk Shorncliffe Road

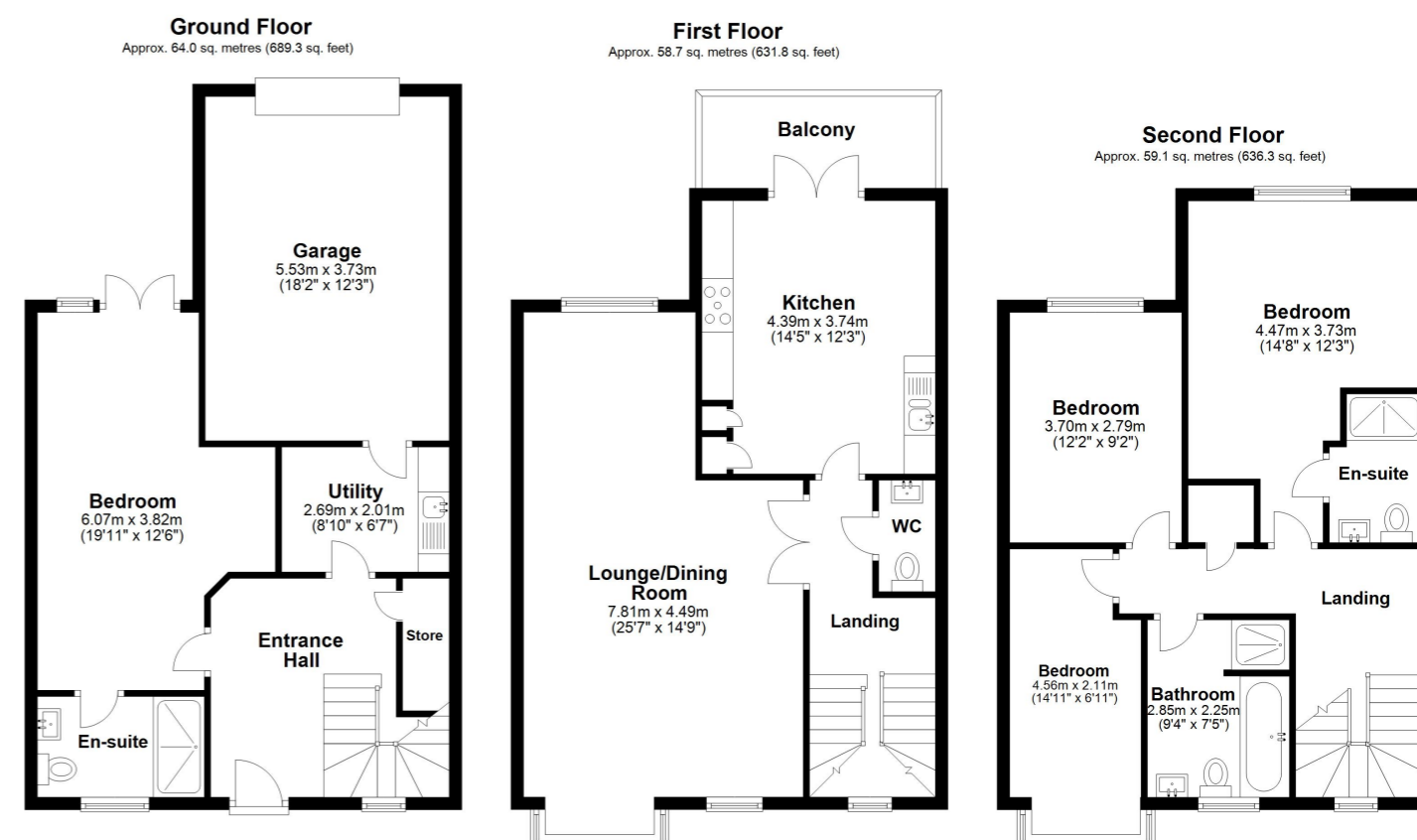
Folkestone
CT20 2UQ

£580,000 FREEHOLD

FOR SALE WITH BURNAP + ABEL... Welcome to your dream home in the heart of Folkestone! This stunning 4 bedroom terraced house is in excellent condition and boasts a prime location close to both the train station and town centre. This beautiful new build features four bedrooms, three bathrooms, perfect for accommodating a growing family or hosting guests. With off-road parking and a garage, you'll never have to worry about finding a spot for your car. Enjoy morning coffee or evening cocktails on the balcony with panoramic views of the surrounding area. Don't miss out on this incredible opportunity - schedule a viewing today before it's gone! For your chance to view call SOLE agent Burnap and Abel now on 01303 258590



- Entrance**
- Bedroom**
19' 11" x 12' 6" (6.07m x 3.81m)
- En-Suite**
- Utility room**
8' 10" x 6' 7" (2.69m x 2.01m)
- Garage**
18' 2" x 12' 3" (5.54m x 3.73m)
- Lounge/Dining Room**
25' 7" x 14' 9" (7.80m x 4.50m)
- Kitchen**
14' 5" x 12' 3" (4.39m x 3.73m)
- Balcony**
- W.C**
- Bedroom**
14' 8" x 12' 3" (4.47m x 3.73m)
- En-Suite**
- Bedroom**
12' 2" x 9' 2" (3.71m x 2.79m)
- Bedroom**
14' 11" x 6' 11" (4.55m x 2.11m)
- Bathroom**
9' 4" x 7' 5" (2.84m x 2.26m)
- Garden**



Total area: approx. 181.9 sq. metres (1957.4 sq. feet)

Whilst every attempt has been made to ensure the accuracy of the floor plan contained here, measurements of doors, windows, rooms and any other items are approximate and no responsibility is taken for any error, omission or mis-statement. This plan is for illustrative purposes only and should be used as such by any prospective purchaser. Plan produced using PlanUp.

