

4 Laverstock Court

Constitution Steps | St Peter Port |

This first floor apartment is offered to the market in move in condition and forms part of a small development of similar units. The property is located in a very quiet spot in the town centre, tucked away from the hustle and bustle of the high street but still benefiting the St Peter Port amenities being on your doorstep. Accommodation comprises open plan lounge/kitchen/diner, a bedroom with fitted wardrobes and a three piece bathroom. There is a communal courtyard and each unit has a bin shed. This is an ideal option for both first time buyers or those looking for a buy-to-let.

£280,000

SOLE
AGENT

1 BEDROOM

1 BATHROOM

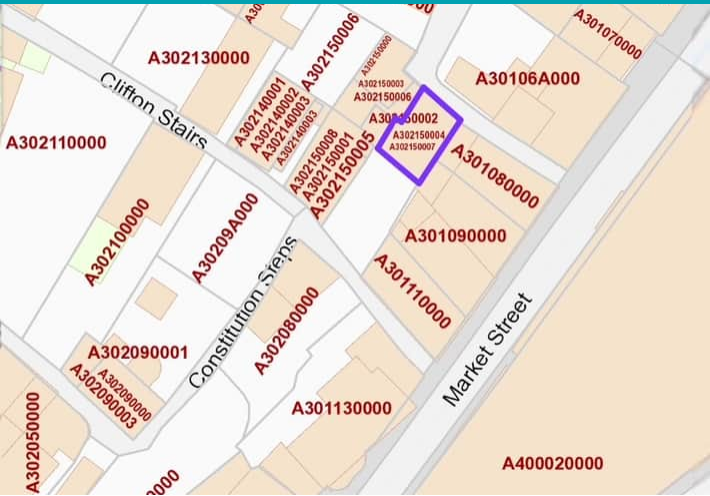
1 RECEPTION

Shields
& Rutland

PHOTOS



SPECIFICATIONS



Entrance Hall

2.12m x .96m (6' 11" x 3' 2")

Kitchen

2.4m x 1.74m (7' 10" x 5' 9")

Lounge

3.61m x 3.10m (11' 10" x 10' 2")

Bedroom

3.09m x 2.96m (10' 2" x 9' 9")

Bathroom

1.97m x 1.68m (6' 6" x 5' 6")

Courtyard

There is a communal courtyard and each unit has a bin shed.

PRICE INCLUDES

Curtains, carpets and light fittings

SPECIAL FEATURES

- Move-in condition
- Quiet location
- uPVC double glazed windows

SERVICES

Mains gas, water and electricity.
Main drain.

APPLIANCES INCLUDED

Hotpoint washer/dryer

Hotpoint hob

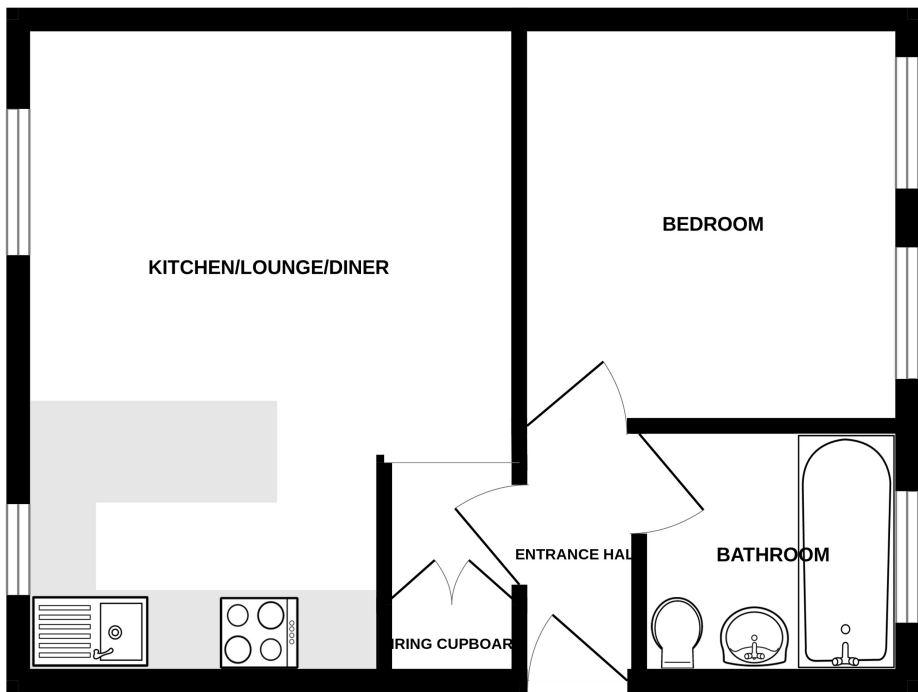
Hotpoint single oven

Integrated fridge

SCHOOL CATCHMENT

Not applicable

GROUND FLOOR



Whilst every attempt has been made to ensure the accuracy of the floorplan contained here, measurements of doors, windows, rooms and any other items are approximate and no responsibility is taken for any error, omission or mis-statement. This plan is for illustrative purposes only and should be used as such by any prospective purchaser. The services, systems and appliances shown have not been tested and no guarantee as to their operability or efficiency can be given.
Made with Metropix ©2025