



27 Cowper Road, Welwyn Garden City, Hertfordshire, AL7 3LT

- Two double bedrooms
- Generous private garden with two decked areas
- Stylish bathroom with shower over bath
- Modern kitchen & dining area
- Bright dual-aspect lounge with patio doors
- Off-street parking/driveway
- Close to local amenities and schools
- Immaculately presented throughout



PROPERTY DESCRIPTION

Stunning Two Bedroom Ground Floor Maisonette with Driveway & Impressive Garden

Immaculately presented and thoughtfully extended, this beautifully appointed two-bedroom ground floor maisonette offers stylish, modern living with an exceptional garden and private driveway. Located in a popular residential area, the property is just a short journey from the town centre, with easy access to the mainline train station—ideal for commuters. It's also conveniently close to local amenities and well-regarded schools, making it a fantastic option for a range of buyers. Step into a spacious hallway that leads to a sleek and contemporary bathroom, complete with shower over bath, basin and WC. The modern kitchen opens into a bright dining area, perfect for entertaining, while the dual-aspect lounge features patio doors that flood the space with natural light and offer direct access to the garden. The master bedroom enjoys views over the mature garden through a large window, while the second double bedroom offers generous proportions and versatility. Outside, the garden is a true highlight—featuring two decked seating areas, a well-maintained lawn, mature planting, and a handy shed for storage. This superb home combines indoor comfort with exceptional outdoor space and an excellent location.



ROOM DESCRIPTIONS

Lounge

Dual aspect living space with large window overlooking the rear garden and patio doors out to the decking area.

Kitchen / Diner

A range of shaker style units, integrated oven with inset hob and extractor. There is also a washing machine, dishwasher and space for a fridge freezer. The dining area has a door out to the side access.

Bedroom 1

Spacious double bedroom with large window overlooking the rear decking area. Blocked fire place. Ample space for wardrobes and storage.

Bedroom 2

Double bedroom with plenty of space for wardrobes and drawers.

Bathroom

Modern fitted bathroom with shower over bath, basin and w/c. Heated towel rail.

About Welwyn Garden City

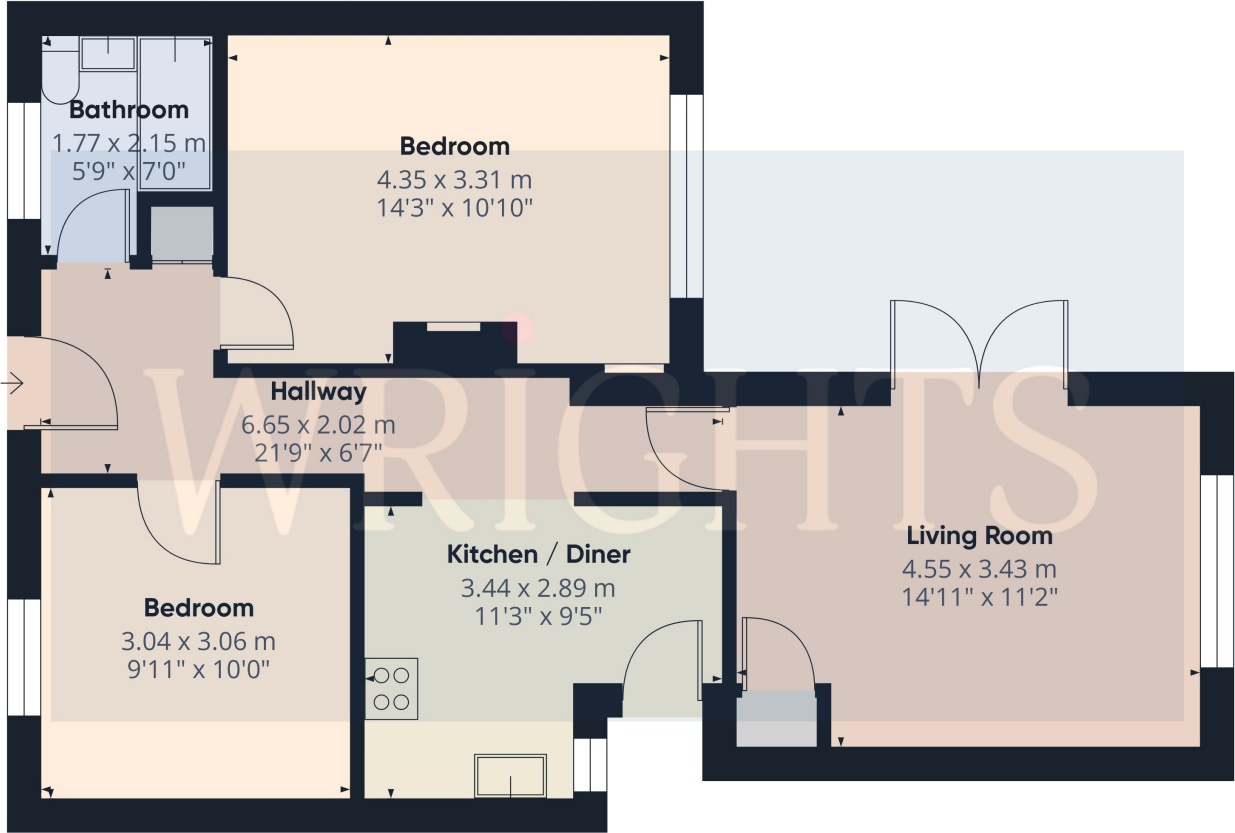
Welwyn Garden City was founded by Sir Ebenezer Howard in the 1920s and designated a new town in 1948. It was aimed to combine the benefits of the city and countryside. Welwyn Garden City was an escape from life in overcrowded cities to a place of sunshine, leafy lanes, countryside and cafes. Emphasis was placed on the Garden City's healthy environment. Today the town centre is a busy and bustling place with a selection of shops. The Howard Shopping Centre is located in the centre, where you can find a selection of high street favourites including John Lewis. There is also a Waitrose, Sainsburys and ALDI. There is also a quaint cinema, showing the latest films. If you fancy a spot of lunch the town is home to a plethora of coffee shops, independent restaurants and well known chains including the French restaurant Cote which overlooks the fountain and for a real buzzing atmosphere, Bills is a great place to meet friends.



FLOORPLAN

WRIGHTS

WRIGHTS



Approximate total area^m
60.5 m²
651 ft²

(1) Excluding balconies and terraces

Calculations reference the RICS IPMS 3C standard. Measurements are approximate and not to scale. This floor plan is intended for illustration only.

GIRAFFE360