



Jackmans Place, Letchworth Garden City, Hertfordshire, SG6 1RH

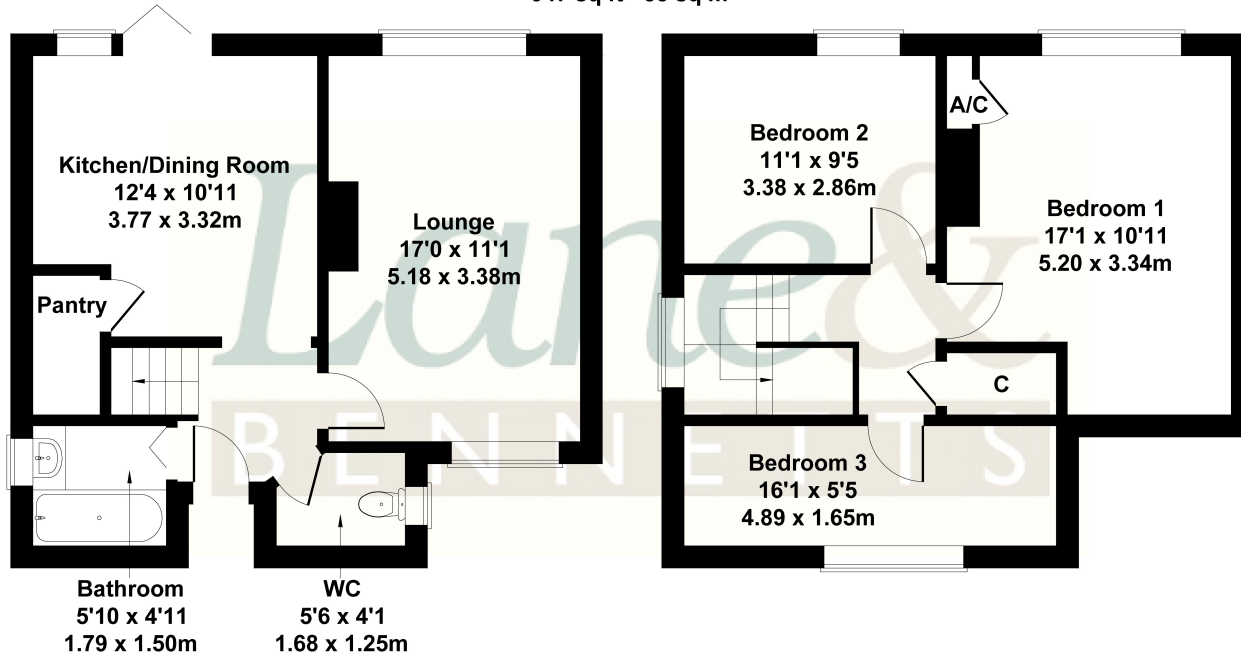
£365,000

Lane & Bennetts are delighted to bring to the market this well-loved home. Upgrades have been made throughout the property with shutters installed, original floorboards restored and beautiful reclaimed doors throughout. The individual designed kitchen has space for a large fridge/freezer and space for a dining table. French doors open out to the mature garden. The dual aspect lounge room boasts a lovely oak and brick feature mantel. There is a modern downstairs bathroom with shower over and separate WC, both to the ground floor and first floor. The master bedroom is sizeable with window overlooking the garden. The second spacious double bedroom with restored wood floorboards is also rear facing. The third bedroom is a useful shape and currently offers two work stations. To the front of property there is off-road parking for two cars with lawn & hedging. The well-cared for gardens are a good size with patio, summer house, bike storage and ample shrubbery and specimen planting.

Lane &
BENNETTS

18 Jackmans Place

Approximate Gross Internal Area
947 sq ft - 88 sq m



Not to Scale. Produced by The Plan Portal 2023
For Illustrative Purposes Only.

- THREE BEDROOM FAMILY HOME
- OFF-ROAD PARKING FOR TWO CARS
- DUAL ASPECT LOUNGE
- KITCHEN / DINER WITH PANTRY
- BATHROOM & ADDITIONAL WC
- SIZEABLE MASTER BEDROOM
- SOUTH FACING REAR GARDEN
- DELIGHTFUL PATIO, SUMMER HOUSE & BIKE STORAGE
- LESS THAN A MILE TO STATION
- 5 / 10 MINUTES WALK TO TOWN, PARKS & AMENITIES
- Tenure: Leasehold - 125 years from 1999
Council Tax Band: C | EPC: D

