



- Two Bedroom Home
- Ideal For First Time Buyers & Buy To Let Investors
- Complete Onward Chain
- Well Presented Throughout
- Ground Floor Cloakroom
- Gas Central Heating & UPVC Windows
- Marks Farm Development
- Easy Access To The A120

52 Braiding Crescent, Braintree, Essex. CM7 3LU.

Michaels Property Consultants are pleased to present to the market this fabulous two-bedroom semi-detached house occupying a private & secluded position within the ever-popular Marks Farm Development.



Property Details.

Entrance Hall



Front door, radiator, and door leading into the cloakroom.

Cloakroom



Obscure double glazed window to front, low-level WC, pedestal hand wash basin with hot & cold tap, radiator, and partly tiled walls.

Lounge/Diner



15' 7" x 9' 8" (4.75m x 2.95m) Double glazed window to front & side, radiator, wood effect laminate flooring, under stairs storage cupboard, stairs rising to the first floor, opening to;

Kitchen



9' 0" x 5' 8" (2.74m x 1.73m) Matching wall & base units with worktops over, inset sink with side drainer unit, integrated oven & hob with extractor over, integrated appliances - Fridge/freezer, dishwasher, and washing machine.

First Floor Landing

Loft access, doors to;

Bedroom One



10' 11" x 10' 4" (3.33m x 3.15m) Double glazed window to front, radiator, built-in wardrobe.

Property Details.

Bedroom Two



13' 8" x 6' 7" (4.17m x 2.01 m) Double glazed window to front, radiator, internet connection/telephone line.

Bathroom



Radiator, WC, pedestal hand wash basin, paneled corner bath with shower over, tiled walls, extractor fan.

Garden



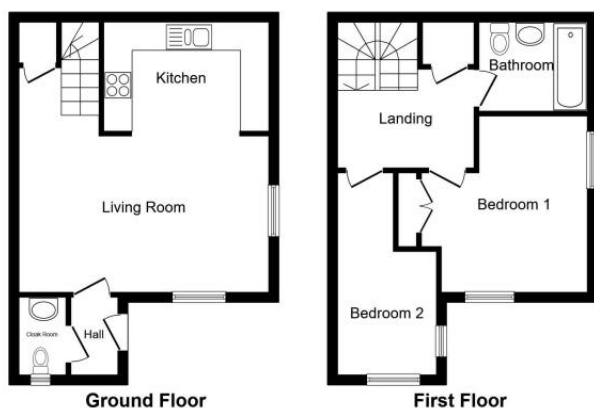
Side access via a wooden gate, enclosed by paneled fencing.

Parking

There is allocated parking available for one vehicle.

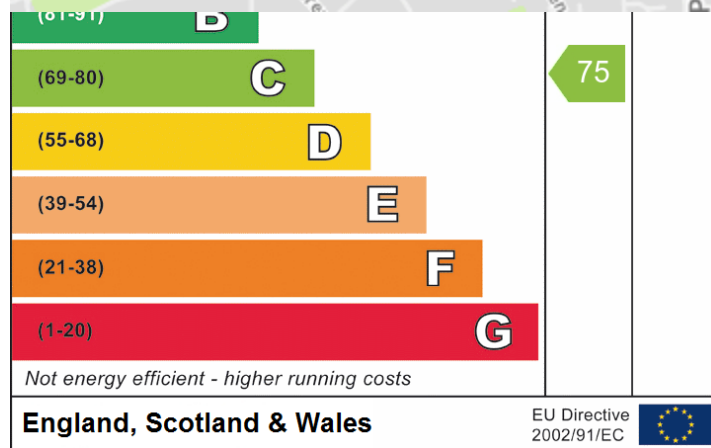
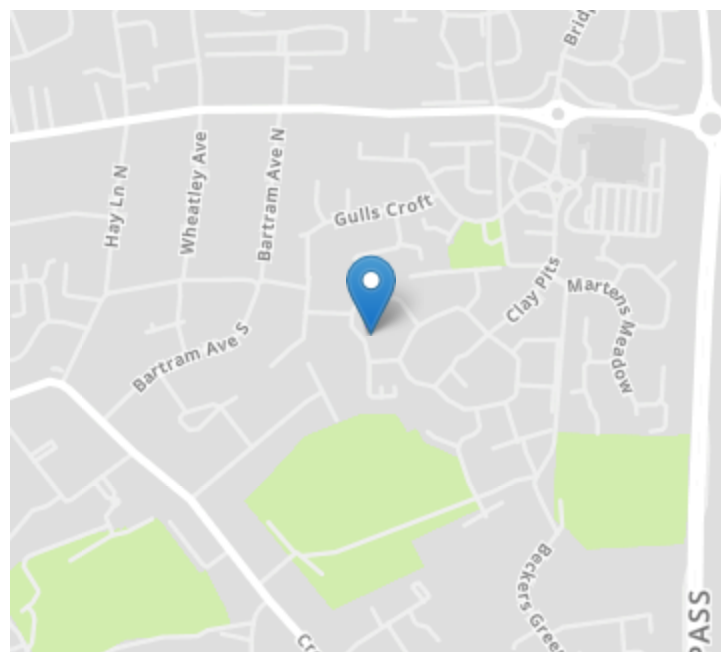
Property Details.

Floorplans



This plan is for illustration purposes only and may not be representative of the property. Plan not to scale.

Location



We have not carried out a structural survey and the services, appliances and specific fittings have not been tested. All photographs, measurements, floor plans and distances referred to are given as a guide only and should not be relied upon for the purchase of carpets or any other fixtures or fittings. Gardens, roof terraces, balconies and communal gardens as well as tenure and lease details cannot have their accuracy guaranteed for intending purchasers. Lease details, service ground rent (where applicable) are given as a guide only and should be checked and confirmed by your solicitor prior to exchange of contracts.