

Farnsworth Court, West Parkside, Greenwich, SE10 0QG

£1,395 PCM

Enjoying a fabulous Greenwich location and situated in the popular Greenwich Millennium Village overlooking the green open spaces of the ecology park, a one bedroomed apartment which offers modern contemporary styling for city living. Nearest station is North Greenwich (Jubilee) offering easy access to Canary Wharf and the City. The apartment also features a 24 hour concierge service. Offered furnished

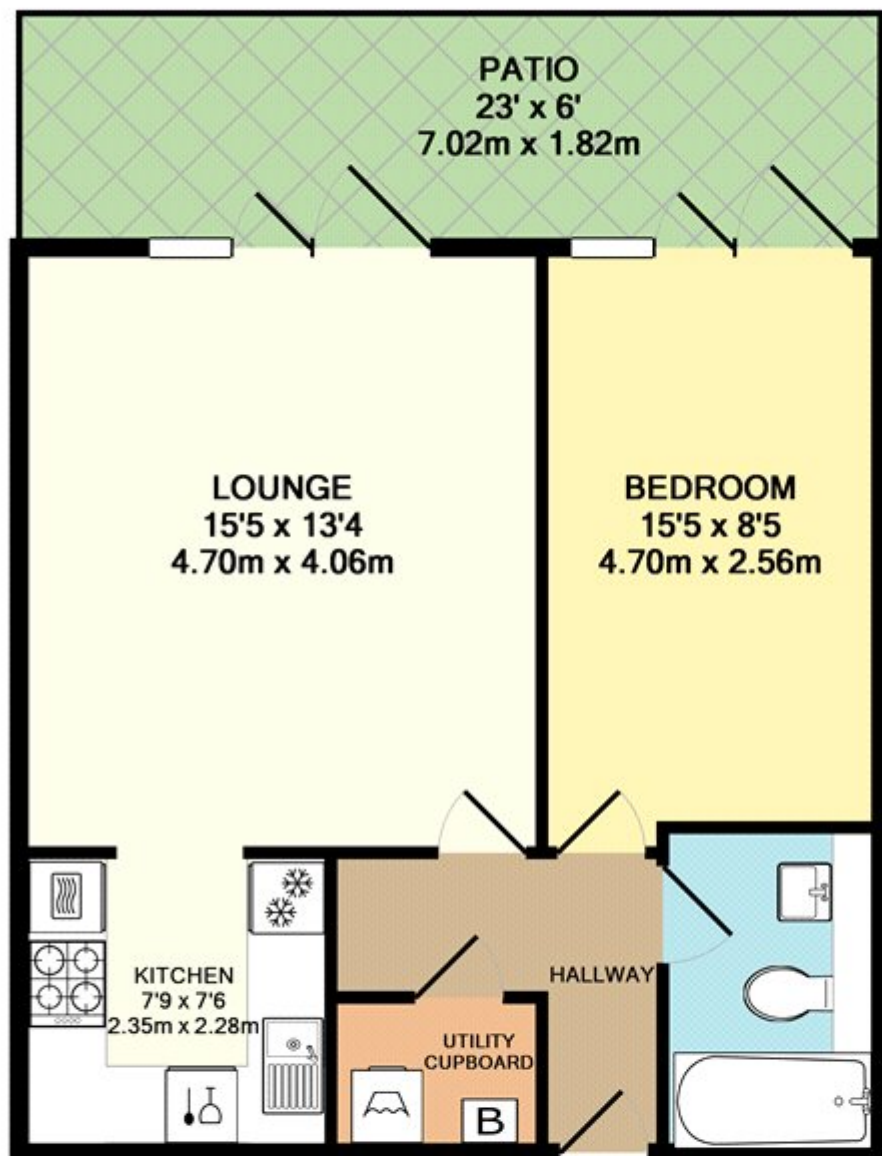
Viewing by appointment with 1st avenue.

Call: 020 8293 8600

1st avenue, 128 Metcalfe Court, West Parkside, London SE10 0EL
email: info@1stavenue.co.uk

Farnsworth Court, West Parkside, ~~£1,395~~ PCM Greenwich, SE10 0QG

1stavenue
Real Estate Services



TOTAL APPROX. FLOOR AREA 507 SQ.FT. (47.1 SQ.M.)

Whilst every attempt has been made to ensure the accuracy of the floor plan contained here, measurements of doors, windows, rooms and any other items are approximate and no responsibility is taken for any error, omission, or mis-statement. This plan is for illustrative purposes only and should be used as such by any prospective purchaser. The services, systems and appliances shown have not been tested and no guarantee as to their operability or efficiency can be given

Made with Metropix ©2013

Viewing by appointment with 1st avenue.

Call: 020 8293 8600

1st avenue, 128 Metcalfe Court, West Parkside, London SE10 0EL
email: info@1stavenue.co.uk

1stavenue
Real Estate Services