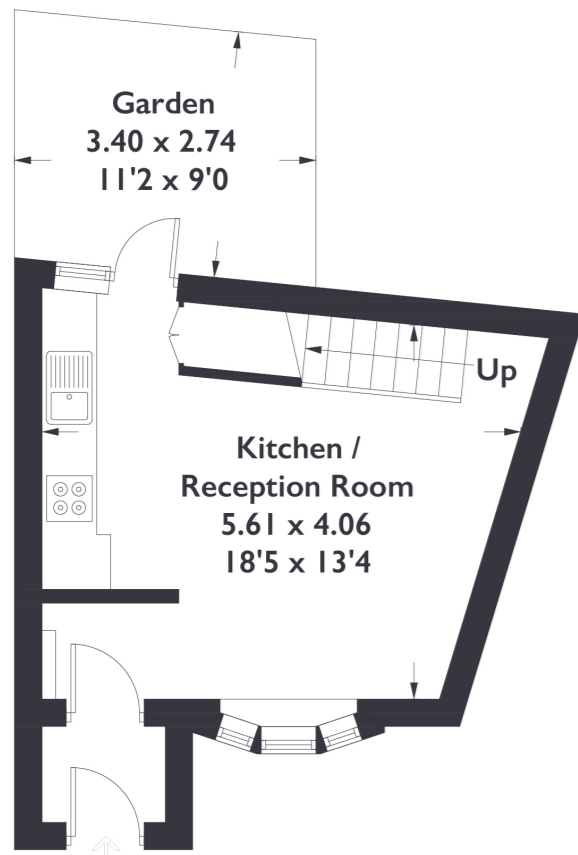
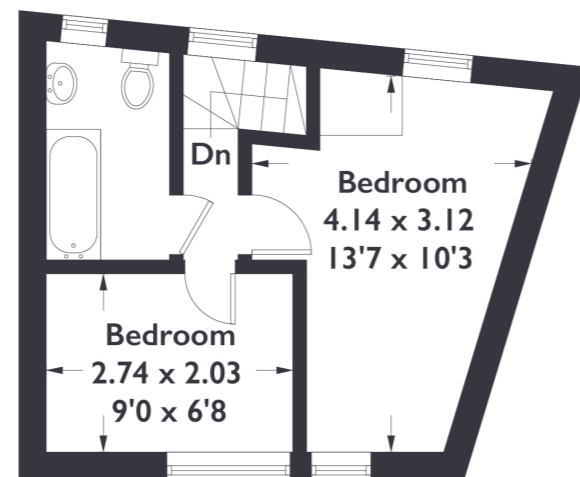


**Loveday Road, W13**

Approximate Gross Internal Area = 45.6 sq m / 491 sq ft



**Ground Floor**



**First Floor**

Measured in accordance with RICS Code of Measuring Practice. To be used for identification and guidance purposes only. Whilst every care is taken in the preparation of this plan, please check all dimensions, shapes and compass bearings before making any decisions reliant upon them.



**2 BEDROOM HOUSE**

**Loveday Road, W13**

**£499,950**

This two bedroom end of terrace house is located within the heart of Northfields, offering a bright interior, well maintained private courtyard garden and a clever use of storage space. Loveday Road is within walking distance of a wide variety of cafes, shops and restaurants, including convenient transport links into the city.

**FEATURES**

- End Of Terrace House
- Two Bedrooms
- Access To Loft
- Private Courtyard Garden
- Built in Storage Throughout
- Hardwood Flooring Throughout
- Northfields Station (Piccadilly Line) Moments Away
- West Ealing Station (Elizabeth Line) Nearby



2 BEDROOM HOUSE

## Loveday Road, W13

£499,950

You are welcomed into an open plan living area, flooded with natural light. The property also benefits from hardwood flooring throughout.

Built in storage units and custom made built in storage under the stairs offers a clever use of the space. The kitchen features an integrated dishwasher and plenty of storage space, with the benefit of further storage points. Leading through to the rear, the private courtyard is well maintained and secluded, with rear access. The first floor offers two good sized bedrooms and a family bathroom. The first floor has multiple storage points, using the space cleverly. There is also access to a fully insulated loft.

Loveday Road is within the heart of Northfields and just a stones throw away from all of the amenities Northfield Avenue has to offer. Both Northfields Station (Piccadilly line) and West Ealing Station (Elizabeth Line) are only a short walk away. Schools such as the Ofsted Outstanding Fielding primary School and Ealing Fields high School are also close by.

