



T: 01432 355455
E: hereford@flintandcook.co.uk
W: <https://www.flintandcook.co.uk/>
A: 22 Broad Street, Hereford, HR4 9AP

FOR SALE

£475,000

Plot 1 Eign Hill Gardens, Hereford, Herefordshire. HR1 1UA



UNDER CONSTRUCTION - on an exclusive development of just 9 properties in a highly favoured residential area, about a mile and a half northeast of the Cathedral City of Hereford.

The property benefits from high levels of insulation, gas central heating, double-glazing and has generously sized living accommodation (approx. 1493 sq.ft), a low maintenance south-facing garden, off-road parking and we recommend an internal inspection. Hereford City centre is within easy driving distance and there is a popular range of amenities nearby including primary and secondary schools, church, public house, shops, riverside walks and daily bus services.

22 Broad Street

Hereford

HR4 9AP

Tel: 01432 355455

hereford@flintandcook.co.uk

37 High Street

Bromyard

HR7 4AE

Tel: 01885 488166

bromyard@flintandcook.co.uk

Managing Director: Jonathan Cook F.N.A.E.A., F.N.A.V.A.

Sales Director Hereford: Martin Pearce M.N.A.E.A.

Flint & Cook Limited Registered in England No. 12997370

Registered Office: 22 Broad Street, Hereford, UK, HR4 9AP

VAT No.489 0289 02

Canopy porch

Door to

Spacious Reception Hall

Window, stairs leading to the first floor, understairs store cupboard and door to the

Downstairs Cloakroom

With low flush WC, wash hand-basin, radiator and window.

Large Lounge

A light and airy room with 2 radiators, window to the front aspect.

Study

Radiator, electric fuseboard and window to the front aspect.

L-shaped Kitchen

With window to the rear, door to side, comprehensively fitted with a range of wall and base units, ample worksurfaces with splashbacks, 1½ bowl sink unit with mixer tap over, built-in double oven and 4-ring hob with splashback and cooker hood over, radiator, window overlooking the rear garden, built-in dishwasher and refrigerator, opening to the

Dining Room

Radiator and double patio doors leading to the rear garden

First floor landing

With radiator, airing cupboard, access hatch to loft space and door to

Bedroom 1

Window to the rear, radiator and door to EN-SUITE SHOWER ROOM with suite comprising double-width shower cubicle, wash hand-basin, low flush WC, radiator, extractor fan and window.

Bedroom 2

Window to the front, radiator, space for wardrobes.

Bedroom 3

Window to the front, radiator, space for wardrobes.

Bedroom 4

Window to the rear, radiator.

Bathroom

Suite comprising panelled bath, separate corner shower cubicle, low flush WC, wash hand-basin, radiator, heated towel rail, shaver point, extractor fan and window.

Outside

To the front of the property there is a brick boundary wall with entrance gate and pathway, and lawn.

There is pedestrian access to either side of the property to the rear parking area and the south-facing garden which is graded and seeded and enclosed by fencing to maintain privacy, with a paved patio area. Electric Vehicle charging point (7 kw).

Services

Mains water, electricity, drainage and gas are connected. Gas-fired central heating.

Outgoings

Council tax band - to be assessed.
Water and drainage - metered supply.

Reservation Fee

There will be a Reservation Fee of £5000 payable to Broadheath Construction Ltd.

Agents note

Anticipated completion September 2024.

Viewing

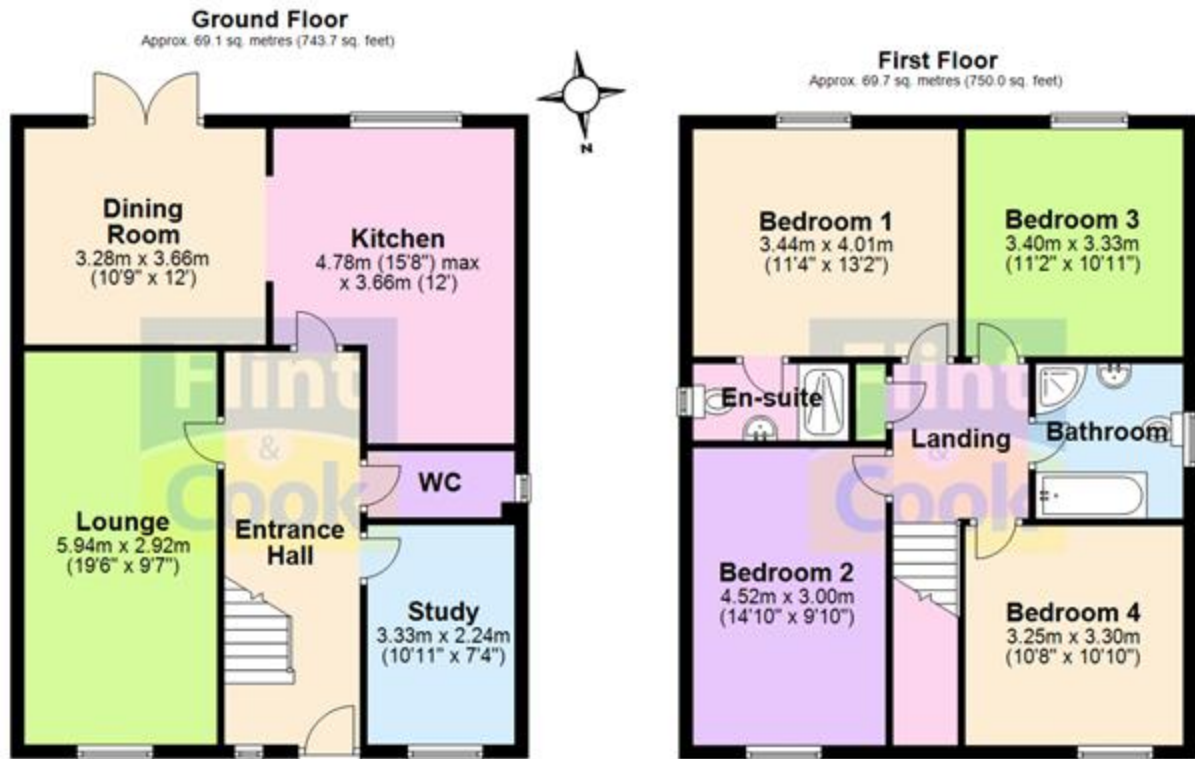
Strictly by appointment through the Agent, Flint & Cook, Hereford (01432) 355455.

Directions

What3words - belts.lakes.farm







Total area: approx. 138.8 sq. metres (1493.7 sq. feet)

This plan is for illustrative purposes only
Plan produced using PlanUp.

These particulars are prepared for the guidance only of prospective purchasers. They are intended to give a fair and overall description of the property and do not constitute the whole or any part of an offer or contract. Any information contained herein (whether in text, plans or photographs) is given in good faith but should not be relied upon as being a statement or representation of fact. Any plans provided by the agents and/or with the sales particulars are intended for guidance purposes only; we cannot guarantee the accuracy and scale of any plans, and they do not form any part of the sales contract. Nothing in these particulars shall be deemed to be a statement that the property is in good condition or otherwise nor that any services or facilities are in good working order. Any movable contents, fixtures and fittings, (whether wired or not) referred to in these property particulars (including any shown in the photographs) are, unless the particulars say otherwise, excluded from the sale. In the event that the buyer proposes to purchase any movable contents or include them in any offer for the property, the buyer cannot in any respect imply any such inclusion from the property particulars. Any areas, measurements or distances referred to herein are approximate only and may be subject to amendment. It should not be assumed that the property has all necessary planning, building regulation or other consents and these matters must be verified by an intending purchaser. The information in these particulars is given without responsibility on the part of the agents or their clients and neither the agents nor their employees have any authority to make or give any representations or warranties whatever in relation to this property.

Flint & Cook Privacy Statement: We take your privacy very seriously. Your data will not be shared with any other parties without your express permission. Our Data protection Policy can be read in full on the Flint & Cook website, www.flintandcook.co.uk