



philip INDEPENDENT
ESTATE
AGENT
Jarvis



81 Charlesford Avenue, Kingswood, Kent. ME17 3PH.

£599,995 Freehold

Property Summary

"This home is so deceptively spacious and I just love the plot size". - Matthew Gilbert, Branch Manager.

Book now to view this exceptional four bedroom detached chalet bungalow found in the sought after village of Kingswood.

The property to the ground floor comprises of a large entrance hall, modern kitchen, lounge diner, refitted family bathroom and two double bedrooms, one of which has an ensuite. To the first floor there are two bedrooms and a separate study.

Externally to the front there is ample off road parking whilst to the rear there is a well stocked garden, lawned area and good size workshop/studio which will remain.

Added to this the home offers double glazing, a brand new fitted boiler and fully working log burner.

Kingswood is a popular semi-rural village with a small selection of amenities to include a convenience shop, village hall, primary school and a food outlet. For a wider range of amenities and direct railway to London the larger villages of Lenham and Headcorn are found nearby. Kingswood also has access to junction eight of the M20 found at Leeds Castle.

Features

- Four Bedroom Detached Chalet Bungalow
- Double Glazing & Gas Central Heating
- Ensuite To Master Bedroom
- Well Presented Throughout
- EPC Rating: D
- Generous Size Plot
- High Specification Kitchen
- Newly Fitted Boiler
- Direct Fibre
- Council Tax Band F

Ground Floor

Front Door To Hall

Radiator. Stairs to first floor with cupboard underneath. Storage cupboard.

Lounge/Diner

30' 5" x 11' 11" (9.28m x 3.64m) Double glazed window to front with electric roller blinds. Two radiators. Log burner. TV point. BT point with direct fibre. Wall lights.

Kitchen/Breakfast Room

17' 9" x 10' 10" (5.41m x 3.30m) Double glazed window to rear. Double glazed French doors to rear. High gloss finish range of base and wall units. Integrated Bosch oven and separate Miele microwave oven. Wine cooler. Space for washing machine, dishwasher and fridge/freezer. Electric induction hob. BRITA water filtered tap and sink. Glass splash back. Underfloor electric heating. TV point. Wine rack. Breakfast bar.

Bathroom

Double glazed obscured window to side. Cupboard housing water softener. Suite comprising of low level WC, double wash hand basin, bath with electric power shower, partly tiled walls and glass screen. Cupboards. Wall lights. Heated towel rail. electric smart mirror to remain.

Bedroom One

13' 11" x 9' 11" (4.24m x 3.01m) Double glazed bay window to front. Built in wardrobes and overhead storage. Radiator. Storage cupboard housing electric meter and consumer unit. Picture rail.

Ensuite

Suite comprising of low level WC, corner hand basin and jet shower cubicle with retractable glass screen. Chrome heated towel rail. Localised tiling. Extractor. Glass cabinet.

Bedroom Two

11' 11" x 10' 4" (3.64m x 3.14m) Double glazed window to rear. Radiator. Picture rail.

First Floor

Landing

Hatch to loft access. Smoke alarm. Triple door storage cupboard.

Bedroom Three

13' 2" x 7' 1" (4.01m x 2.17m) Double glazed window to rear. Wall mounted thermostat. Radiator. Storage in eaves with boiler and water tank.

Bedroom Four

13' 2" x 12' 8" (4.01m x 3.87m) 'U' shaped room (measurements to max). Double glazed window to front. Radiator.

Office

11' 5" x 4' 4" (3.47m x 1.32m) Double glazed Velux window to side. Radiator.

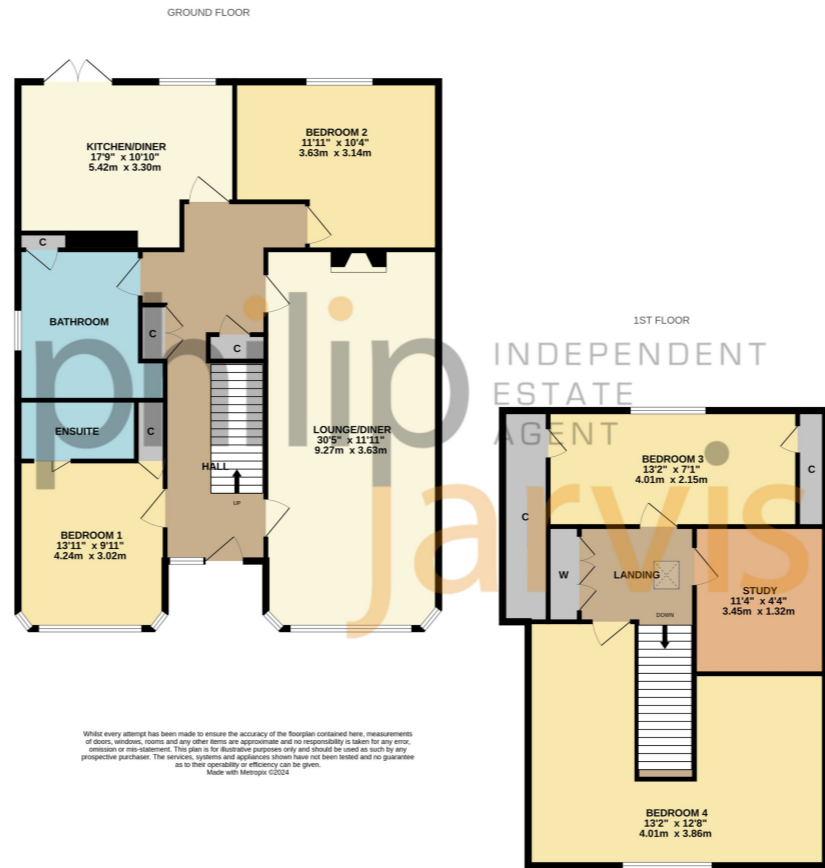
Exterior

Front

Five bar gate leading to shingled parking area for numerous vehicles. Small lawned area with shed to remain. Outside lighting. Security lighting. Electric car charging point. Side pedestrian access to both sides.

Rear Garden

Mainly laid to lawn. Paved patio and separate shingled area. Large log cabin/workshop to remain. Plants, shrubs and trees to borders. Separate paved patio area with pergola.



INDEPENDENT ESTATE AGENT

Viewing Strictly By Appointment With

Please Note: All dimensions are approximate and quoted for guidance only. Reference to appliances and/or services does not imply they are necessarily in working order or fit for purpose. interested parties are advised to obtain verification from their solicitors as to the freehold/leasehold status of the property, the position regarding any fixtures and fittings and where the property has been extended/converted as to Planning Approval and Building Regulations compliance. These particulars do not constitute or form part of an offer or contact, nor may they be regarded as representations. All interested parties must themselves verify their accuracy. Where a room layout or virtual tour included this is for the general guidance only, it is not to scale and its accuracy cannot be confirmed.

