



10a Cantelupe Road, Bexhill-on-Sea, East
Sussex, TN40 1JG

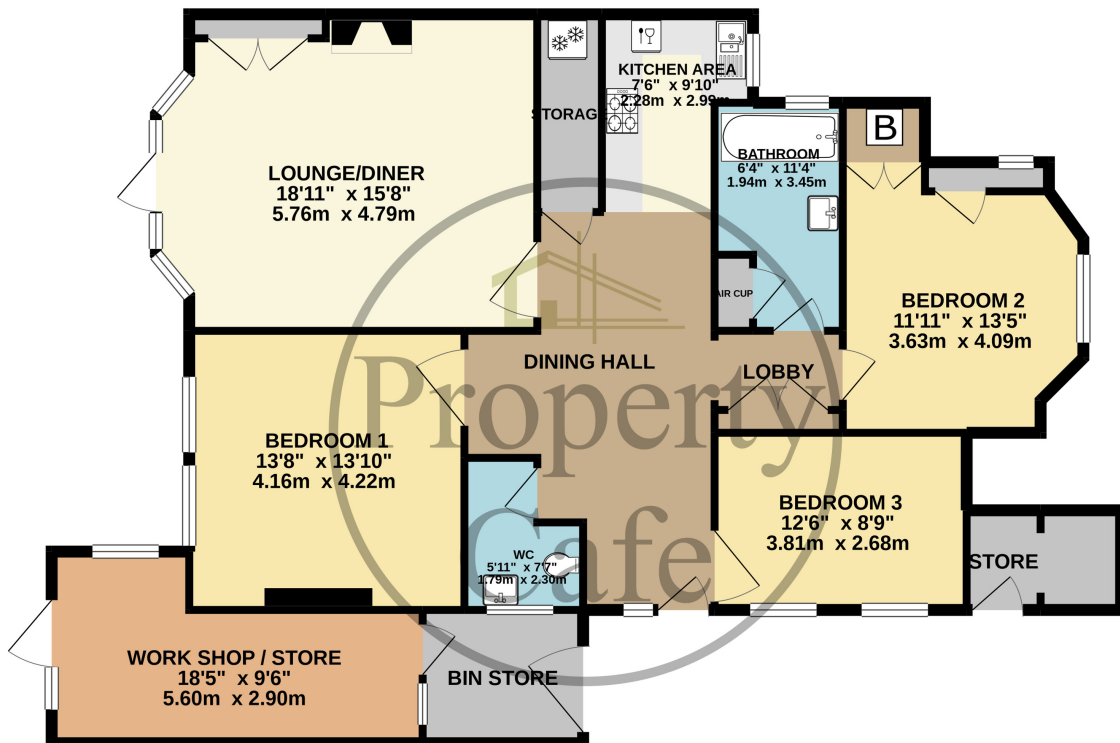
£369,950



- Spacious Three Bedroom Apartment
- Own Private Entrance & Inner Hall
- Lovely South Facing Rear Garden
- Large South Facing Reception
- Spacious Dining Hall Area
- Modern Open Plan Kitchen Area
- Modern Tiled Bathroom Suite
- Separate WC with Hand Basin
- Master Bedroom Overlooking Garden
- Central Heating & D.Glazed
- Lovel Original Character Features
- Original Parquet Wood Flooring
- Enclosed Bin Store Area
- Ample Storage Throughout
- Access to External Store Workshop
- Sought After & Convenient Location
- Private Areas Of Garden To Front Rear
- Amazing Mature Sth Facing Garden
- Ideal For Town Centre & Seafront
- Long Lease & Share Of Freehold
- Internal Viewing Highly Recommended



GROUND FLOOR
1388 sq.ft. (129.0 sq.m.) approx.



TOTAL FLOOR AREA : 1388 sq.ft. (129.0 sq.m.) approx.

Whilst every attempt has been made to ensure the accuracy of the floorplan contained here, measurements of doors, windows, rooms and any other items are approximate and no responsibility is taken for any error, omission or mis-statement. This plan is for illustrative purposes only and should be used as such by any prospective purchaser. The services, systems and appliances shown have not been tested and no guarantee as to their operability or efficiency can be given.
 Made with Metropix ©2021

