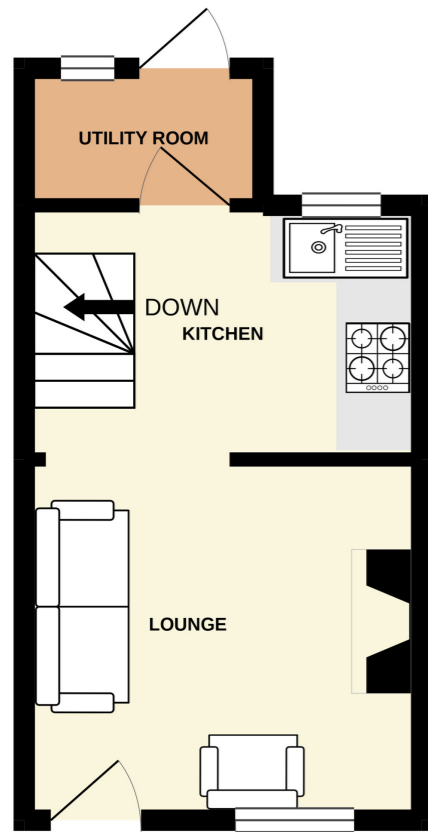
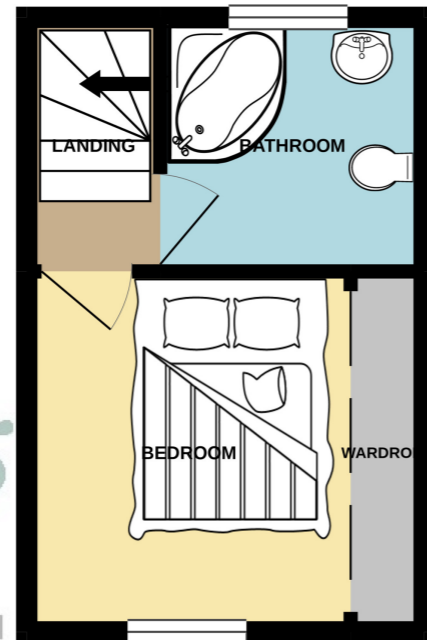


Floor Plans

GROUND FLOOR
205 sq.ft. (19.0 sq.m.) approx.



1ST FLOOR
186 sq.ft. (17.3 sq.m.) approx.



TOTAL FLOOR AREA : 391 sq.ft. (36.3 sq.m.) approx.

Whilst every attempt has been made to ensure the accuracy of the floorplan contained here, measurements of doors, windows, rooms and any other items are approximate and no responsibility is taken for any error, omission or mis-statement. This plan is for illustrative purposes only and should be used as such by any prospective purchaser. The services, systems and appliances shown have not been tested and no guarantee as to their operability or efficiency can be given.
Made with Meropix ©2020



21, High Street

Gravenhurst, Bedfordshire,

MK45 4HY

£210,000

All measurements are approximate and quoted in metric with imperial equivalents and for general guidance only and whilst every attempt has been made to ensure accuracy, they must not be relied on. The fixtures, fittings and appliances referred to have not been tested and therefore no guarantee can be given and that they are in working order. Internal photographs are reproduced for general information and it must not be inferred that any item shown is included with the property. For a free valuation, contact the numbers listed on the brochure.

Viewing by appointment only

Country Properties | 1, Church Street | MK45 2PJ
T: 01525 403033 | E: amphill@country-properties.co.uk
www.country-properties.co.uk



A truly stunning one bedroom period cottage which has been completely refurbished to an exceptional standard with bespoke features and exposed beams.

- Lounge with feature fireplace.
- Extended rear porch.
- Added advantage of a beautiful rear garden.
- Brick built outbuilding.
- Bespoke oak kitchen with quartz and Elm work surfaces.
- Master bedroom with fitted mirror fronted wardrobes.
- First floor family bathroom with a corner bath.

Ground Floor

Lounge

11' 0" x 10' 0" into alcoves (3.35m x 3.05m) Stable entrance door to the front, brick feature fireplace with log burner and marble hearth, exposed beams, fitted carpet, Georgian style double glazed window to the front, large opening into:

Kitchen

Bespoke base and wall mounted solid oak units with quartz and Elm work surfaces and under-lighting, sink and drainer with mixer tap, integrated Bosch oven and ceramic hob, polished brick flooring, exposed brickwork and beams, double glazed window to the rear, radiator.

Utility

Stable door to the rear garden.

First Floor

Bedroom One

10' 1" x 9' 9" (3.07m x 2.97m) Built-in mirror fronted wardrobes with hanging space and shelving, exposed beams, fitted carpet, Georgian style double glazed window to the front.

Bathroom

A suite comprising of a panelled corner bath with shower over, wash hand basin, low level WC, heated towel rail, exposed beams, polished oak flooring, double glazed window to the rear, access to loft.

Outside

Rear Garden

Shaped lawn area, patio area, shrubs and flower borders, storage barn.

