



Flat 2., 10 Kingsnorth Gardens

Folkestone
CT20 2QW

£825

pcm

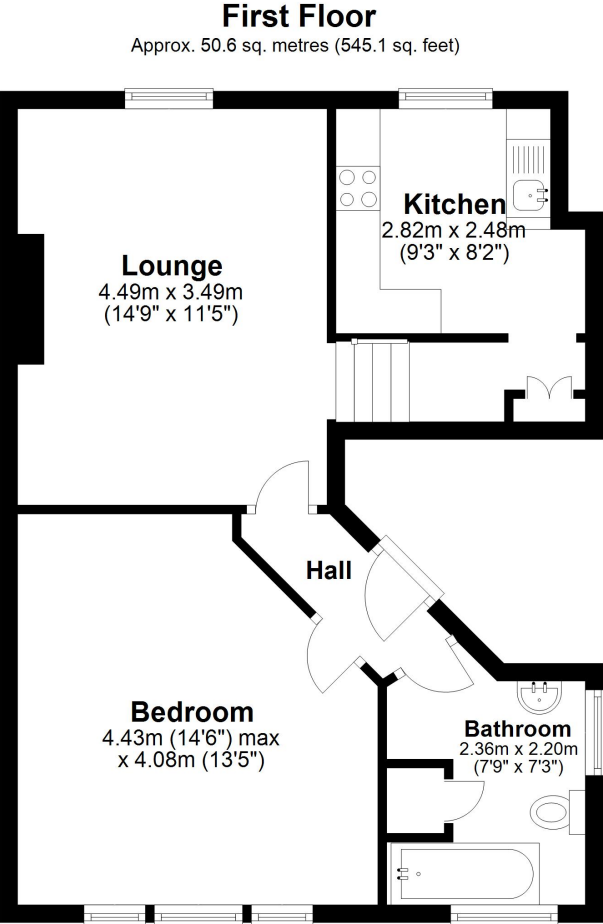
TO LET WITH BURNAP + ABEL... Welcome to this charming and modern one bedroom first flat located in the desirable Kingsnorth Gardens, Folkestone. This property is conveniently situated close to both Folkestone Central Train Station and the town, making it perfect for commuters and city explorers alike. As you step inside, you will be impressed by the good decorative order throughout the property. The spacious lounge offers a cozy retreat for relaxation, while the fully equipped kitchen is perfect for whipping up delicious meals. The bathroom boasts contemporary finishes, adding a touch of luxury to your daily routine. The bedroom provides a tranquil space for rest and relaxation at the end of a long day.

Working and retired tenants must be earning a minimum of £24,750 per annum as a combined household.

No pets, no smoking.

www.burnapandabel.co.uk





Whilst every attempt has been made to ensure the accuracy of the floor plan contained here, measurements of doors, windows, rooms and any other items are approximate and no responsibility is taken for any error, omission or mis-statement. This plan is for illustrative purposes only and should be used as such by any prospective purchaser.
Plan produced using PlanUp.

