

# Bread Street

Warminster, BA12 8DE

COOPER  
AND  
TANNER



£299,950 Freehold

🚗 3 🛋️ 2 🚿 1 EPC D

## Description

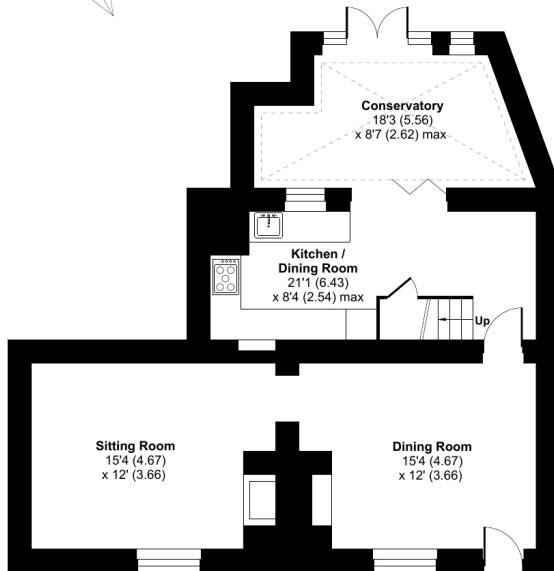
Entering the property, this period cottage has plenty of character features with beams and fire places throughout the property. The dining room is the first room you come to which has plenty of space for a family table. On the left side of the property is the living room with gas fire place. To the rear is the kitchen breakfast area with a range of wall and base units with stairs leading to the first floor and doors leading to the conservatory. On the first floor are two double bedrooms with a comfortable single all served by the family bathroom.

To the rear of the property is a patio with a step up to the gardens which is laid to lawn with a rear access and mature tree giving privacy to the garden.

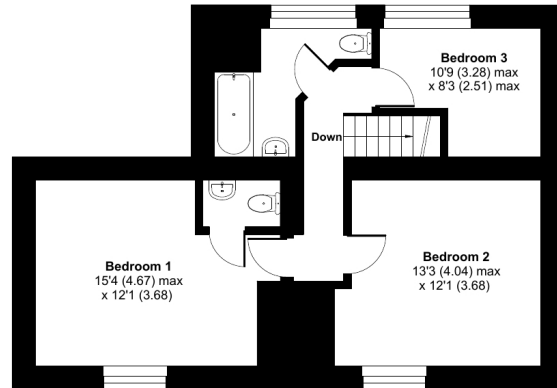
## Bread Street, Warminster, BA12

Approximate Area = 1356 sq ft / 126 sq m

For identification only - Not to scale



GROUND FLOOR



FIRST FLOOR



Floor plan produced in accordance with RICS Property Measurement Standards incorporating International Property Measurement Standards (IPMS2 Residential). © nichecom 2022. Produced for Cooper and Tanner. REF: 899318



### Features

- Period Cottage
- Three Bedrooms
- Two Reception Rooms
- Kitchen
- Conservatory
- Family Bathroom
- Rear Garden
- Character features

### Local Information

- Council Tax Band D
- Tenure Freehold
- EPC Rating D

#### WARMINSTER OFFICE

Telephone 01985 215579

48-50, Market Place, Warminster, Wiltshire BA12 9AN

[warminster@cooperandtanner.co.uk](mailto:warminster@cooperandtanner.co.uk)

COOPER  
AND  
TANNER

Important Notice: These particulars are set out as a general outline only for the guidance of intended purchasers and do not constitute, nor constitute part of, an offer or contract. All descriptions, dimensions, reference to condition and necessary permissions for use and occupation, warranties and other details are given without responsibility and any intending purchasers should not rely on the m as statements or representations of fact but must satisfy themselves by inspection or otherwise as to the correctness of each of them.

