



Sunnymead Farm Cottage
Ashwell, Baldock | SG7 5RN



Step inside

Sunnymead Farm Cottage

Welcome to Sunnymead Farm Cottage, a beautifully modernized three-bedroom detached bungalow nestled on the edge of the charming village of Ashwell just outside the mediaeval town of Baldock. This home is offered to the market with vacant possession.

This inviting home features a spacious layout designed for contemporary living with modern fixtures and fittings throughout offering a blend of countryside living with modern convenience. As you step inside, you are greeted in to the open hallway which guides you through to each room this charming property has to offer.

You will first be guided in to the light -airy living room which offers countryside views to the front and feature fireplace perfect for cozy nights in. Walking through in to the open plan kitchen, this fantastic space offers ample room for a further seating area or breakfast room and further extends into a lovely dining area, creating the perfect space for entertaining family and friends. A convenient utility room to the side of the kitchen adds practicality to your daily routine and also offers side access, a perfect space for muddy boots and coats after you countryside walk.

The bungalow offers three bedrooms, the master of which facing to the front offering countryside views with the further two bedrooms overlooking the garden space. Further complimenting the property is the stylish and modern fitted shower room, adding a further touch of style to the home.









Step outside

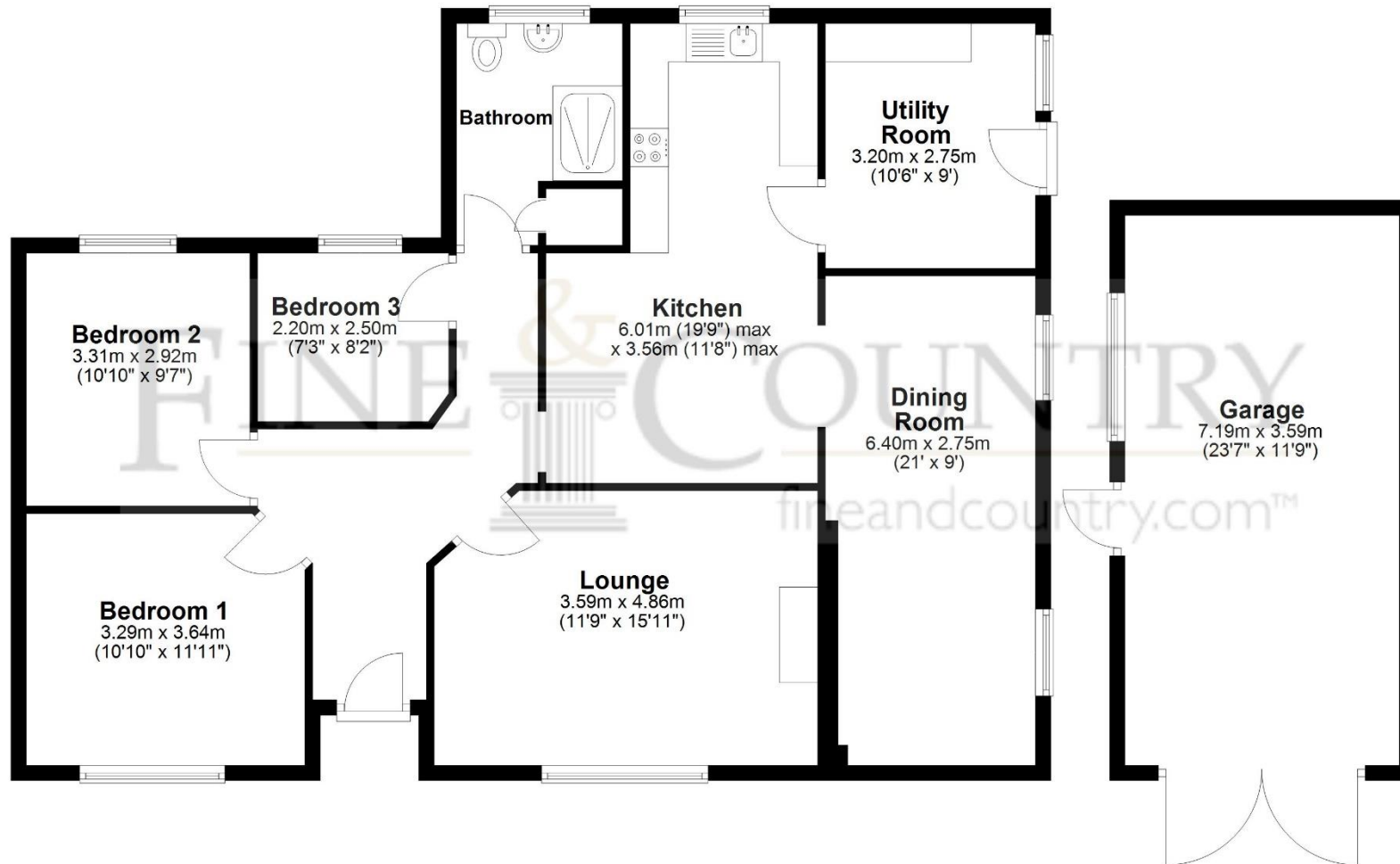
Sunnymead Farm Cottage

Step outside to discover a generous rear garden, a true oasis for outdoor enthusiasts. This expansive space features established trees providing elements of shade, established borders and a delightful summerhouse, ideal for relaxation or a home office, all while enjoying the sunshine and tranquillity of the countryside. The garden provides plenty of room for gardening, play, or hosting summer barbecues.

Additionally, the property includes a driveway, garage and a well-maintained front garden, enhancing its curb appeal. With its perfect blend of modern convenience and rural charm, this bungalow is a wonderful opportunity for those seeking a serene lifestyle in a picturesque setting.



Ground Floor



For illustrative purposes only - NOT TO SCALE - Measurements shown are approximate. The size and position of doors, windows, appliances and other features are approximate.
Plan produced using PlanUp.

Fine & Country

Tel: +44(0) 1462 222555

northherts@fineandcountry.com

Station Place, Letchworth Garden City, Hertfordshire SG6 3AQ

