



421 London Road, Davenham, Northwich, Cheshire, CW9 8HN

£215,000



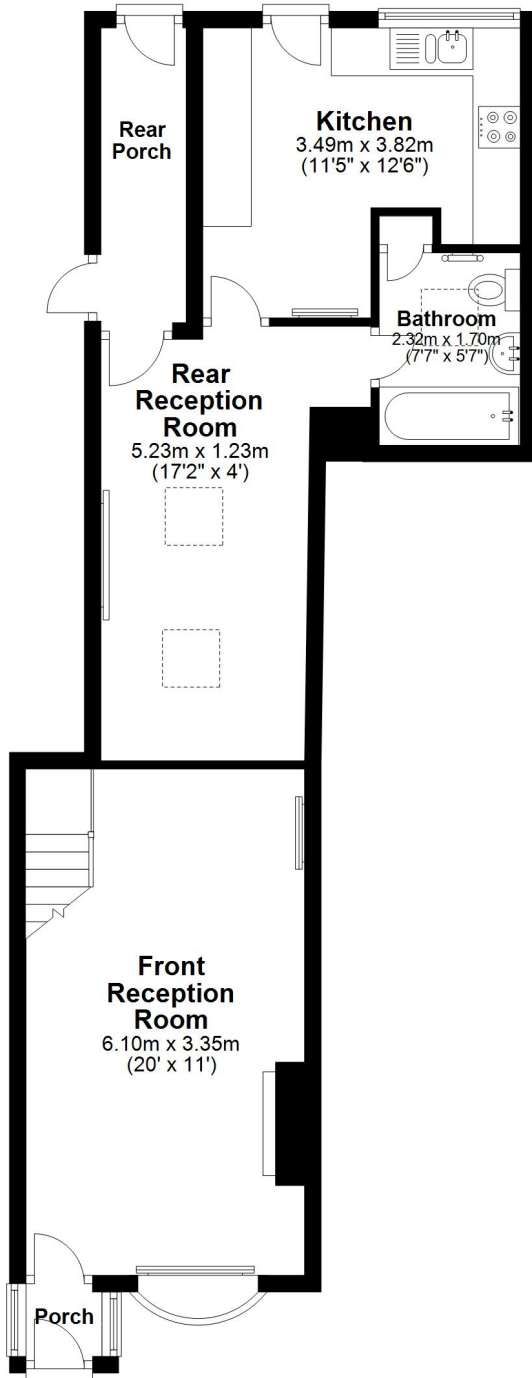
Never has the term, deceptively spacious been better used than to describe this seemingly small, quaint cottage, which is located in the heart of this bustling Cheshire Village. The property has been significantly extended to the rear and now offers two large reception rooms, a large kitchen, bathroom and front and rear porches on the ground floor with two double bedrooms on the first floor. Externally there is parking for at least two cars on the front and to the rear there is a lovely, mature garden, which backs onto the village park with views towards to parish church.



These particulars, whilst believed to be accurate are set out as a general outline only for guidance and do not constitute any part of an offer or contract. Intending purchasers should not rely on them as statements of representation of fact, but must satisfy themselves by inspection or otherwise as to their accuracy. All measurements quoted are approximate. We are unable to confirm the working order of any fixtures and fittings including appliances that are included in these particulars. No person in this firm's employment has the authority to make or give any representation or warranty in respect of the property.

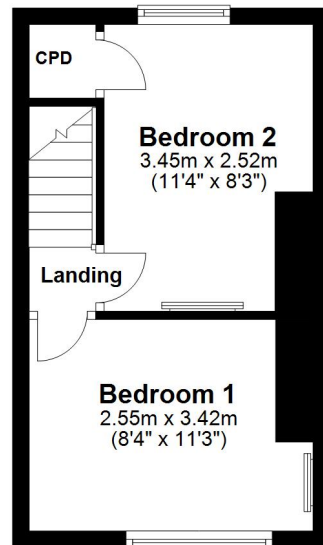
Ground Floor

Approx. 56.2 sq. metres (604.8 sq. feet)



First Floor

Approx. 20.8 sq. metres (224.2 sq. feet)



Total area: approx. 77.0 sq. metres (829.0 sq. feet)

This plan is included as a service to our customers and is intended as a GUIDE TO LAYOUT only. Dimensions are approximate. DO NOT SCALE.



33, The Green, Hartford, Northwich, CW8 1QA

01606 331784

Email: enquiries@westates.co.uk

www.westates.co.uk

Williams Estates