



Heath Drive, Moulsham Lodge, Chelmsford, Essex, CM2 9HF

Council Tax Band C (Chelmsford City Council)



Guide Price £425,000 - £435,000 Freehold

Guide Price £425,000 - £435,000

Bond Residential is thrilled to present this delightful end terrace family home, nestled in the highly sought-after Moulsham Lodge area. This property is perfect for families looking for a blend of comfort, convenience, and community spirit.

As you step through the welcoming entrance hall, you are greeted by a spacious lounge/diner that offers a versatile space for both relaxation and entertaining. The fitted kitchen, complete with modern amenities, provides a seamless connection to the rear garden, making it perfect for those who enjoy indoor-outdoor living. Upstairs, the first floor boasts three well-proportioned bedrooms, each offering ample space for rest and relaxation. The modern four-piece family bathroom is a highlight, featuring a contemporary white suite that adds a touch of luxury to everyday routines. Externally, the property benefits from a driveway providing off-road parking, complemented by a garage for additional storage. The rear garden is a true family haven, beginning with a charming timber decking terrace—ideal for al fresco dining or simply unwinding with a good book. The lawn offers plenty of space for outdoor activities, while the far end of the garden is thoughtfully designed as a children's play area, ensuring fun for the little ones. Situated in Moulsham Lodge, this home offers more than just a place to live; it provides a lifestyle. With local amenities, schools, and parks within easy reach, it's no wonder this area is favoured by families.

LOCATION

Moulsham Lodge is located on the sought after south side of Chelmsford and is hugely popular with homebuyers as it offers a range of local amenities and a regular bus services to the city centre. Moulsham Lodge offers local infants and junior schools as well as Moulsham High school. Chelmsford city centre offers a thriving nightlife with a selection of bars and a wide selection of places to eat from independent family restaurants to well known restaurants serving cuisines from around the world, Chelmsford features a comprehensive range of shopping facilities with its pedestrianised High Street, two shopping precincts and hugely popular Bond Street with John Lewis store.

Chelmsford is extremely popular with leisure enthusiasts with a selection of sports clubs at the local Chelmer Park, a selection gyms including the recently refurbished Riverside Ice & Leisure, there are a selection of golf clubs within the area and the nearby Hylands Park estate and Galleywood Common provide pleasant walks and open spaces.

Chelmsford is renowned for its educational excellence and alongside the local schools situated within close proximity, it offers two of the country's top performing grammar schools, Writtle agricultural college and Anglian Ruskin University.

Chelmsford's mainline station provides a direct service to London Liverpool St with a journey time as fast as 32 minutes, the property is also conveniently located within 2 miles of the A12 and A414 which provide access to the M25 and M11.

- Guide Price £425,000 - £435,000
- Close to Local Amenities
- Four Piece Family Bathroom
- Garage & Driveway

- Popular Location
- Three Bedrooms
- Gas Central heating
- Good Size Rear Garden

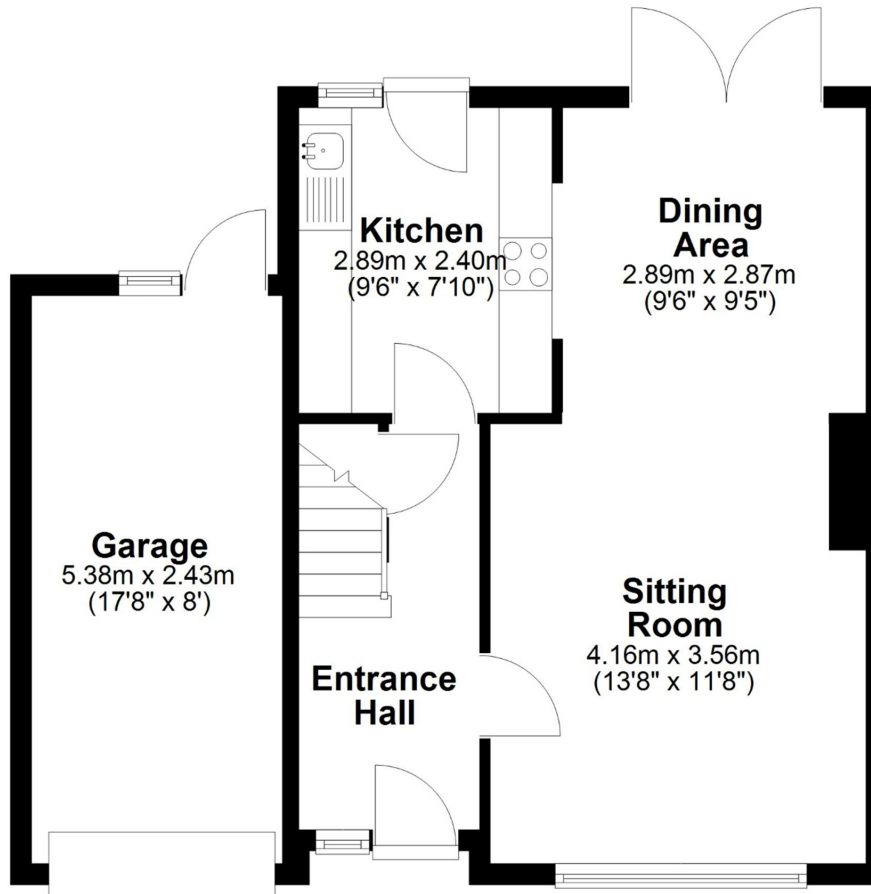




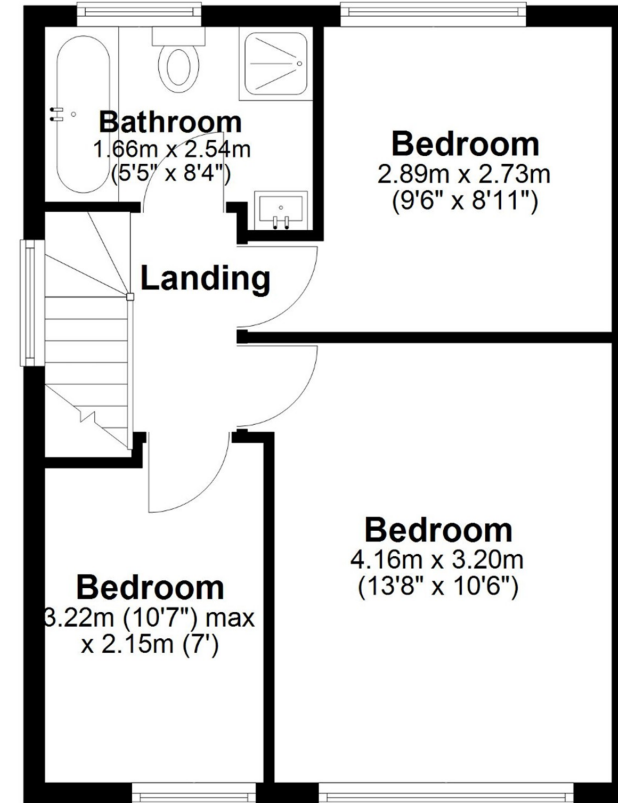




Ground Floor



First Floor



APPROX INTERNAL FLOOR AREA 90 SQ M (970 SQ FT)
This floorplan is for illustrative purposes only and is **NOT TO SCALE**
all measurements are approximate **NOT** to be used for valuation purposes.
Copyright Bond Residential 2025



78, New London Road,
Chelmsford, Essex, CM2 0PD
Telephone: 01245 500599
Website: www.bondresidential.co.uk

Consumer Protection from Unfair Trading Regulations 2008 and the Business Protection from Misleading Marketing Regulations 2008. Bond Residential have made every effort to ensure that consumers and/or businesses are treated fairly and provided with accurate material information as required by law. We have not tested any apparatus, equipment, fixture, fitting or any services and as such are unable to verify they are in working order, fit for their purpose, or within the ownership of the seller or landlord. Neither have we been able to check the legal documentation to verify the legal status of the property. We therefore advise potential buyers or tenants to verify these matters with their own solicitors or other advisers.

