

TURNER STREET

LONDON E1 2AU



THE PROPERTY BROKERS

To Let

- 3 bed 2 bath
- Georgian end of terrace
- 1452 sqft (approx)
- Private garden
- Original features

Turner Street is a handsome Grade-II listed, 3 double-bedroom end of terrace Georgian townhouse set over 4 floors with a charming walled garden. Sensitively renovated by the Spitalfields Trust, this unique house is in a part of London rich in heritage and diverse culture, while being a short walk from the City, and minutes from the major transport hub of Whitechapel.

Offering circa 1452 sqft over four floors the house contains original features throughout including wood-panelling, solid timber flooring and antique lighting; all of which provide a wonderful sense of historical buy-in. Comprising of a large open kitchen/dining room on the lower ground floor there are dual openings from the seating area and also utility room via French doors which lead out to the private walled garden.



020 7993 6553

INFO@TBAPROPERTY.COM

WWW.TBAPROPERTY.COM

TURNER STREET

LONDON E1 2AU



THE PROPERTY BROKERS

The raised ground floor comprises a dual-aspect living space with twin fireplaces and windows to the front fitted with authentic shutters and a window to the rear that looks out over the garden & patio. There is also a main bathroom with walk-in shower on the ground floor.

Moving up through the house the first floor features two well-sized double bedrooms, both with restored panelling and built-in storage. To the rear of the house there is a second bathroom with dual aspect which is fitted with a bathtub. Discreetly hidden by what looks like part of the wood panelling is a door that leads up to the second floor. Entirely occupied by the third bedroom this second floor benefits from a unique triple aspect and central staircase with plenty of space for a desk to make a practical work from home area.

Excellent transport connections are nearby and convenient. Whitechapel station is a five-minute walk away, with services on the District, Hammersmith & City and Overground lines. In late 2021 the Elizabeth line (Crossrail) will take you from Whitechapel Station to Bond Street in 10 minutes and Canary Wharf in just 4



TURNER STREET
LONDON E1 2AU



TURNER STREET

LONDON E1 2AU

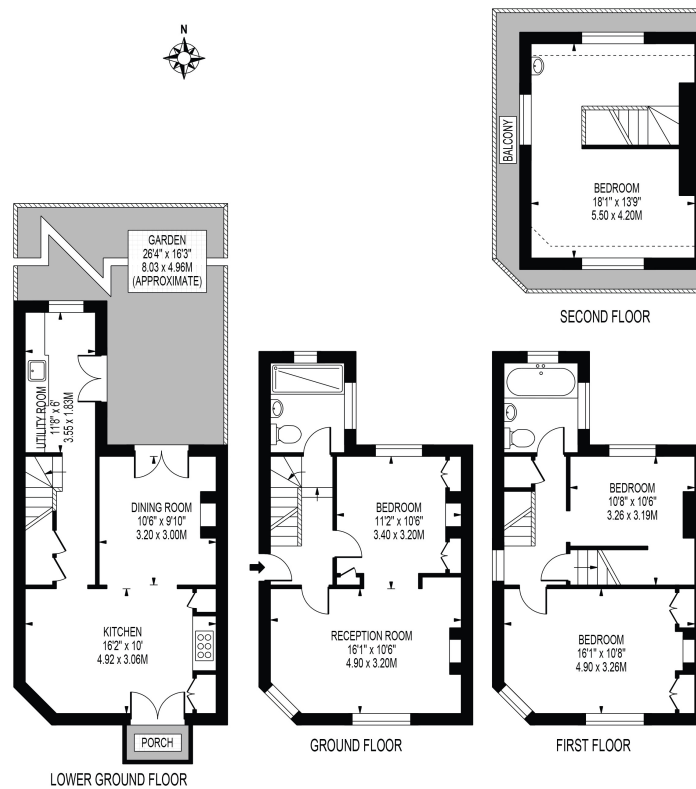


TURNER STREET

APPROXIMATE TOTAL INTERNAL FLOOR AREA: 1452 SQ FT - 134.94 SQ M

(INCLUDING RESTRICTED HEIGHT AREA)

APPROXIMATE GROSS INTERNAL FLOOR AREA OF RESTRICTED HEIGHT: 28 SQ FT - 2.64 SQ M



FOR ILLUSTRATION PURPOSES ONLY

THIS FLOOR PLAN SHOULD BE USED AS A GENERAL OUTLINE FOR GUIDANCE ONLY AND DOES NOT CONSTITUTE IN WHOLE OR IN PART AN OFFER OR CONTRACT. ANY INTENDING PURCHASER OR LESSEE SHOULD SATISFY THEMSELVES BY INSPECTION, SEARCHES, ENQUIRIES AND FULL SURVEY AS TO THE CORRECTNESS OF EACH STATEMENT. ANY AREAS, MEASUREMENTS OR DISTANCES QUOTED ARE APPROXIMATE AND SHOULD NOT BE USED TO VALUE A PROPERTY OR BE THE BASIS OF ANY SALE OR LET.

SALES
LETTINGS
OFF MARKET
ACQUISITIONS
DEVELOPMENT
COMMERCIAL
VALUATIONS

TOBIAS ALLAN

Director

07970 963 478

JAMES DANTON

Director

07930 858 612

ADAM JONES

Director

07769 275 027

