

NORTHMEAD

£269,950

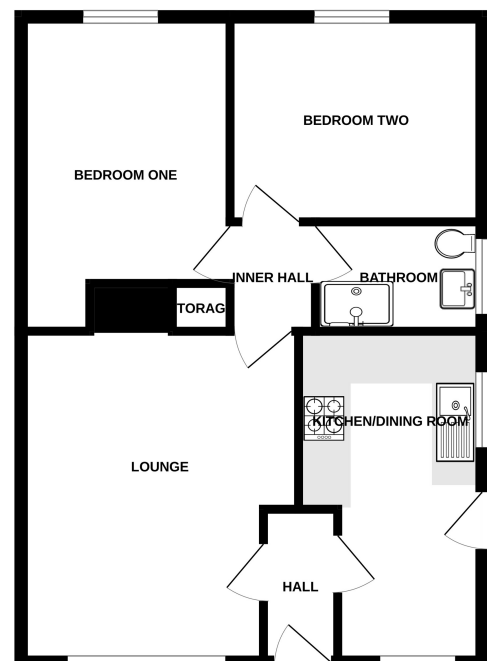


Key Features

- ✓ A semi-detached bungalow.
- ✓ Two Double Bedrooms.
- ✓ Garden.
- ✓ Ample Off Road Parking.
- ✓ No Onward Chain.



GROUND FLOOR
566 sq.ft. (52.6 sq.m.) approx.



TOTAL FLOOR AREA : 566 sq.ft. (52.6 sq.m.) approx.
Made with Metropix ©2024