



Three Bedroom Semi-Detached House  
Dunedin Close, Sittingbourne, Kent, ME10 1RX

£1,600 pcm  
Not Applicable



# Dunedin Close, Sittingbourne, Kent, ME10 1RX

£1,600 pcm

Not Applicable

## Description

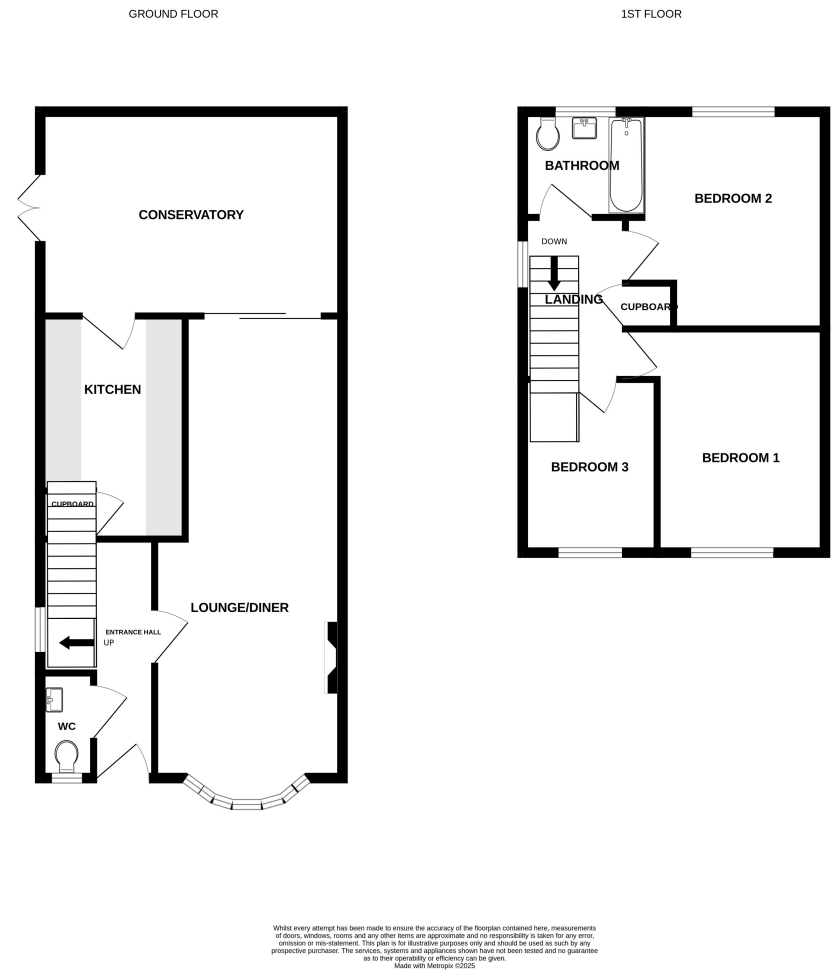
We are pleased to present this well-maintained three-bedroom family home available to let, located in the popular residential area of Dunedin Close, Sittingbourne, Kent. Offering spacious accommodation, a generous rear garden, and a convenient location, this property is ideal for families or professionals seeking a comfortable and well-connected home. The ground floor comprises an entrance hall with a convenient WC, leading to a bright and welcoming lounge/diner with a bay window to the front. The modern kitchen provides ample storage and preparation space and opens into a large conservatory, creating an excellent additional living or dining area with direct access to the rear garden. Upstairs, there are three bedrooms. The principal bedroom and second bedroom are both generously sized doubles, while the third bedroom is ideal as a single room, nursery, or home office. A well-appointed family bathroom serves the first floor, and a landing cupboard offers extra storage. The property boasts a generous rear garden, perfect for outdoor dining, children’s play, or simply relaxing in the warmer months. Situated in a quiet cul-de-sac, the home is within easy reach of local amenities, reputable schools, and excellent transport links, making it a practical choice for commuters and families alike. This property is available for occupation in september and offers the perfect blend of space, comfort, and location. Early viewing is highly recommended to avoid disappointment.

## Key Features

- Available September
- Three-bedroom family home
- Spacious lounge/diner
- Modern kitchen opening to large conservatory
- Ground floor WC for added convenience
- Quiet cul-de-sac close to schools, shops, and transport links
- Generous rear garden ideal for outdoor living
- Driveway for 2 cars
- Garage to the front of the property

## Local Area

Situated in a quiet cul-de-sac within the sought-after residential area of Dunedin Close, this property benefits from a peaceful setting while remaining close to everyday conveniences. Local shops, supermarkets, and essential services are all within easy reach, along with a choice of reputable primary and secondary schools. Excellent public transport links, including nearby bus routes and train stations, make commuting straightforward, with quick connections to surrounding towns and into London. The area also offers a range of parks, leisure facilities, and family-friendly amenities, ensuring a well-balanced lifestyle.



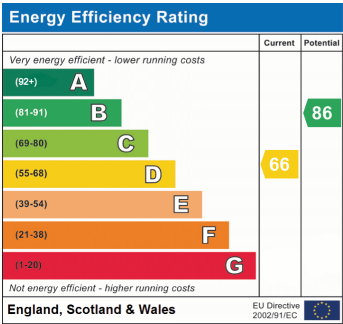
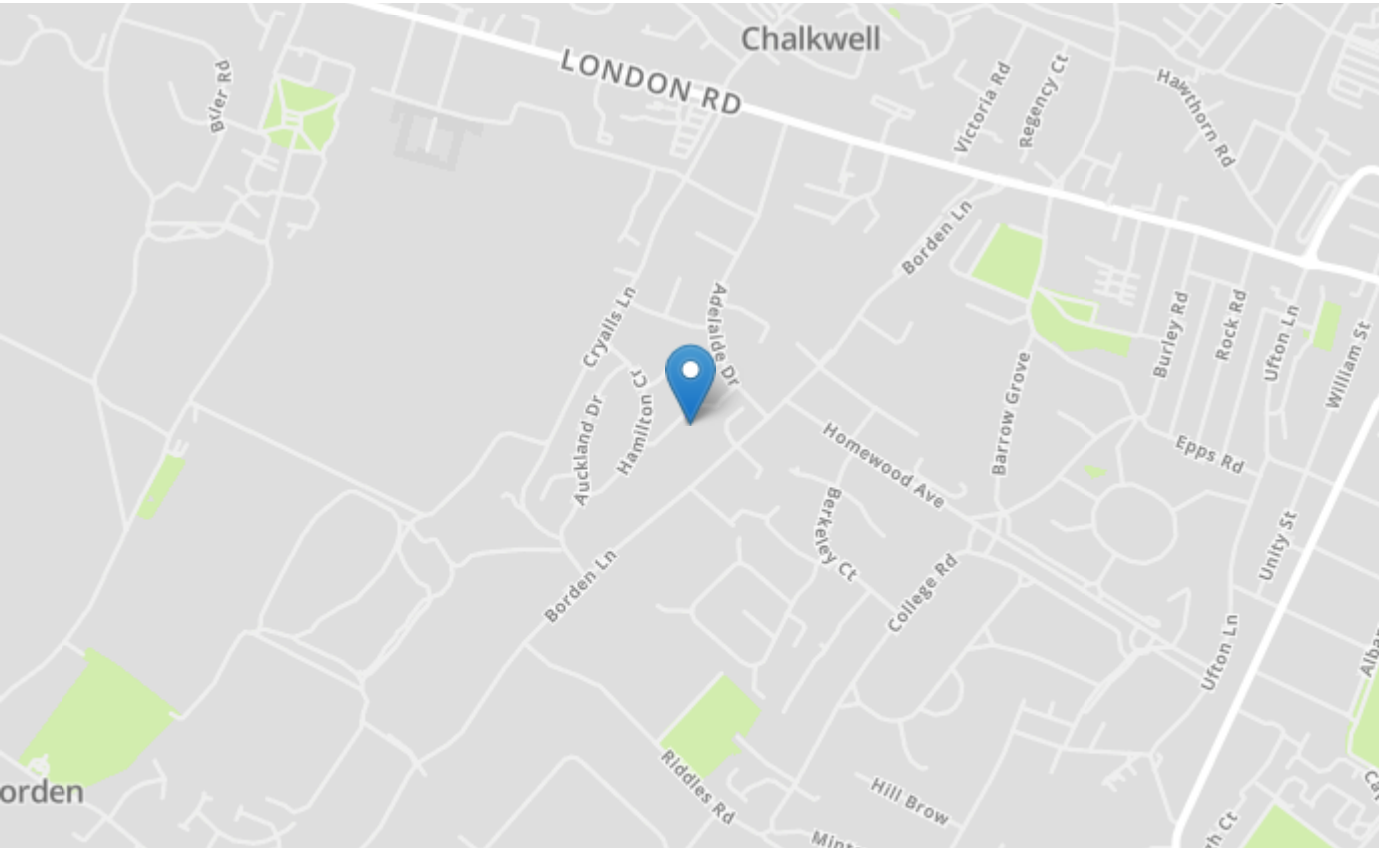






Property Location

Dunedin Close, Sittingbourne, Kent, ME10 1RX



Tenure	Not Applicable
Lease Term	1 Year
Ground Rent	N/A
Service Charge	N/A
Local Authority	Medway Council
Council Tax	Band D

haus Estate Agents  
26, London Road  
Gillingham  
Kent  
ME8 6YX  
Tel: 01634 848883 Email:  
hello@haustateagents.co.uk

**Agent Notes**  
These particulars do not form part of an offer or contract and must not be relied upon as statements or representation of fact.  
The seller does not make or give nor do our employees or haus Estate Agents have authority to make or give any representation or warranty to the property. It should not be assumed that the property has all necessary planning, building regulation or other consents and we have not tested any services, equipment, or facilities. All photographs, measurements, floorplans and distances referred to are given as a guide only and should not be relied upon for the purchase of carpets or any other fixtures or fittings. References to tenure, service charges and ground rent (where applicable) as well as council tax are based on information supplied by the seller. The Buyer should verify all information themselves by inspection or otherwise prior to a legal commitment to purchase. The copyright of all details, photographs and floorplans remains exclusive to haus Estate Agents. If you require clarification or further information on any points, please contact us, especially if you are travelling some distance to view.