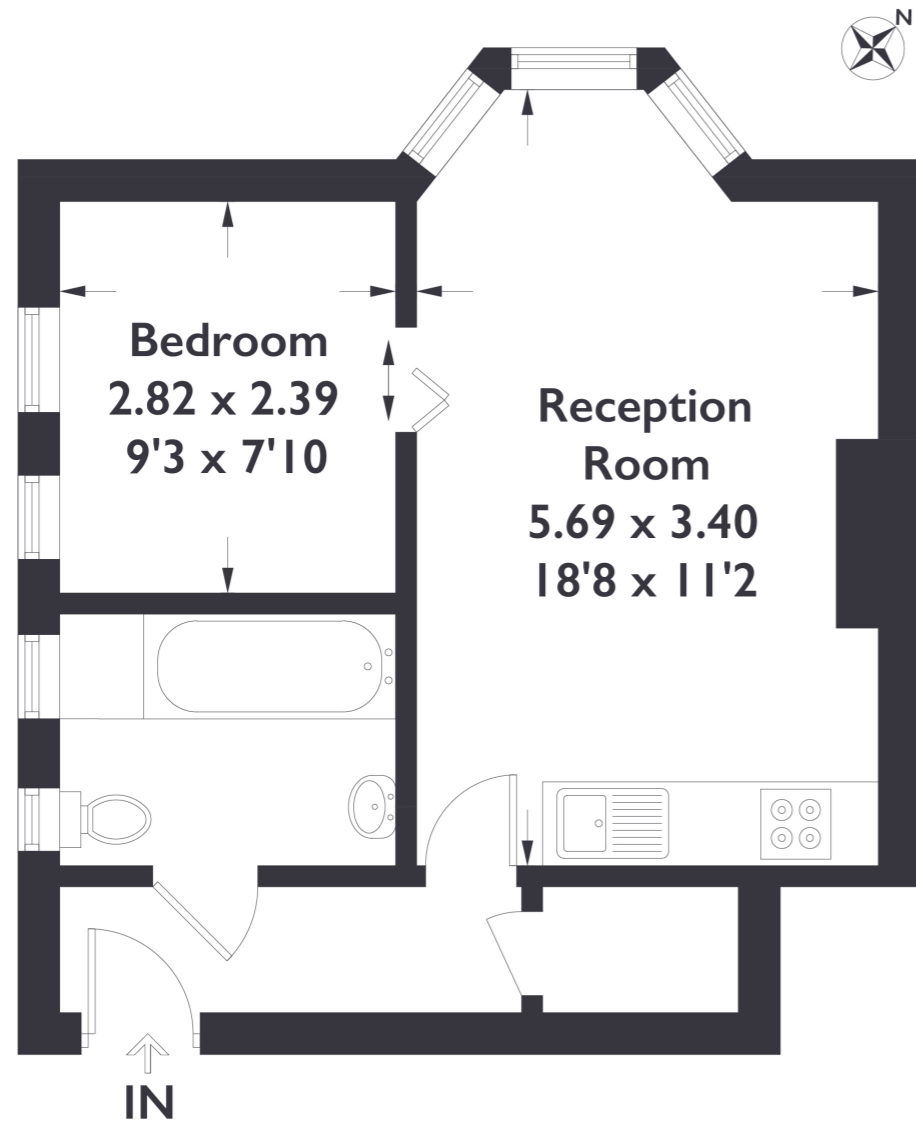


**Holyoake Walk, W5**

Approximate Gross Internal Area = 35.3 sq m / 381 sq ft



**First Floor**

Measured in accordance with RICS Code of Measuring Practice. To be used for identification and guidance purposes only. Whilst every care is taken in the preparation of this plan, please check all dimensions, shapes and compass bearings before making any decisions reliant upon them.



**1 BEDROOM FLAT**

**Holyoake Walk, W5**

£300,000

GUIDE PRICE £300,000-£310,000

Bright and modern one bedroom first floor flat conveniently situated within a short walk of Ealing Broadway and a stones throw from the picturesque Pitshanger Park.

**FEATURES**

- First Floor Flat
- Communal Gardens
- Open Plan Kitchen / Living
- Montpelier Primary School
- Brentside High School
- Family Bathroom
- Bright And Modern Interior



## Holyoake Walk, W5 £300,000

Set on the first floor of a well maintained building with beautiful garden views is this bright and modern one bedroom apartment.

The flat comprises a spacious open plan reception room and kitchen/diner, flooding with natural light. Leading through you'll find a good size bedroom with space for storage and a family bathroom. A large bay window floods the property with natural light. The apartment further benefits from access to scenic communal gardens. Access to the loft space allows for ample amount of storage.

Holyoake House is well positioned for access to the A40 but also a stones throw away from all the amenities Ealing Broadway has to offer. Furthermore, you are just around the corner from the the award winning Pitshanger Lane, featuring a variety of local shops, restaurants and cafes. The apartment further benefits from being within close proximity to local schools such as the Oftsted Outstanding Montpelier Primary School and Brentside High School. Parking is easily accessed with on street parking available.

