



Estate Agents and Solicitors

## 23/15, Stewart Terrace, Gorgie, Edinburgh, EH11 1UW

Well-Presented One Bedroom, Third (top) Floor Flat

Up to date price and viewing info at [mov8realestate.com/property](https://www.mov8realestate.com/property)

éspc rightmove  Zoopla  
find your happy

# Property Description

Well-presented one bedroom flat, set on the third (top) floor of a traditional stone-built tenement, conveniently located in the popular Gorgie area, west of Edinburgh city centre.

Comprises: an entrance hall, open-plan living room and kitchen, double bedroom, utility room, and a bathroom.

Features include a recently fitted bathroom, a fitted kitchen with appliances, double glazing, recently installed gas central heating (2018), and TV and telephone points.

In addition, there is a shared garden to the rear, and unrestricted on-street parking to the front and on surrounding streets.

The entrance hall gives access throughout and features a built-in store cupboard. A spacious open-plan public room features carpeted flooring for the lounge area, an open-shelved press, and recessed spot light fittings.

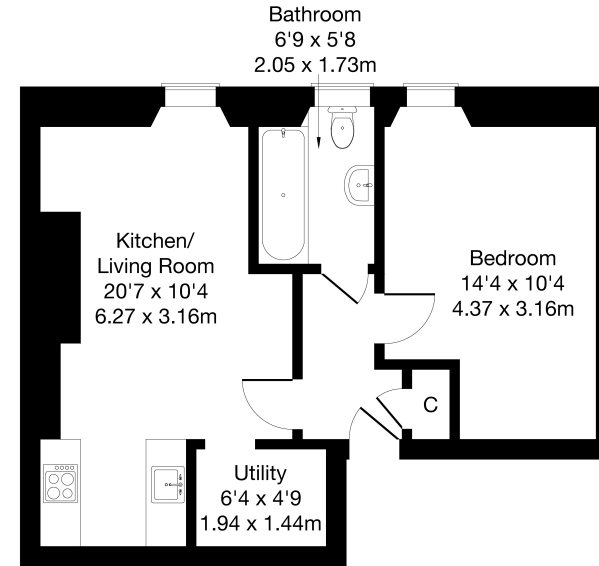
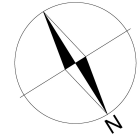
The kitchen is set to the rear of the room and includes stone-effect worktops, a sink with drainer, a tiled surround, fridge/freezer, and an oven and electric hob. Set internally off the lounge, is a flexible utility room with a worktop, washing machine, shelving, and a pass-through to the kitchen.

The bright double bedroom has carpeted flooring, a dado rail, a pendant light fitting, built-in storage under the window, and ample space for freestanding storage.

A newly fitted bathroom has a front-facing window and is fitted with a three-piece suite, including a shower unit over the bath, contemporary wall paneling and a ladder-style radiator.

A 360 Virtual Tour is available online.

**mov<sup>8</sup> REAL ESTATE** 23/15 Stewart Terrace, Edinburgh, EH11 1UW  
Estate Agents and Solicitors Approximate Gross Internal Area: (484 sq ft - 45 sq m.)



Legal Disclaimer : Floor-plan and measurements are for illustrative guidance only, and not intended to form part of any contract.

# Area Description





Gorgie is a popular and historic district of Edinburgh, just west of the city centre, comprising mostly of traditional stone-built tenements. Gorgie Road has a vibrant atmosphere, and provides extensive local amenities along its length, with a Sainsbury's and ALDi in Gorgie, and a 24-hour ASDA at Chesser providing superstore shopping. Home to Heart of Midlothian Football Club, there

are a number of leisure opportunities including Gorgie Farm, Dalry swimming pool, Craiglockhart Sports Centre, and Fountain Park with a multi-screen cinema, fitness centre and numerous restaurants. Frequent bus services are available from Gorgie Road, whilst Haymarket Station, Napier and Heriot-Watt universities and Edinburgh College are also within easy reach.





## Our Services

-  Free pre-sale property valuations
-  Great value fixed estate agency fees
-  Extensive buyer matching database
-  Purchase and sale conveyancing

## Contact Us

0345 646 0208

[sales@mov8realestate.com](mailto:sales@mov8realestate.com)

[www.mov8.com](http://www.mov8.com)

### Head Office

6 Redheughs Rigg, Edinburgh, EH12 9DQ

### Glasgow Office

77 Renfrew Street, Glasgow, G2 3BZ



Estate Agents and Solicitors

