

37 Buttermere Close

Folkestone
CT19 5JH

£300,000 FREEHOLD

FOR SALE WITH BURNAP + ABEL... Welcome to your new home in the charming Buttermere Close, Folkestone. This cozy 2 bedroom semi bungalow is perfect for those seeking a peaceful retreat without sacrificing convenience. Step inside and be greeted by a spacious lounge/diner, perfect for entertaining guests or relaxing after a long day. The well-equipped kitchen offers ample storage and preparation space for all your culinary adventures. Two double bedrooms provide comfort and privacy for you and your loved ones, while the family bathroom offers a relaxing sanctuary to unwind and refresh. Enjoy sunny days in the south facing rear garden, ideal for al fresco dining or simply soaking up the sun. With a garage and off-road parking, you'll never have to worry about finding space for your vehicles. Don't wait - this property is offered with no chain, making it an opportunity not to be missed. Schedule your viewing today and start envisioning the possibilities of making this house your new home.



Entrance Hall

Lounge/Dining Room

14' 9" x 10' 10" (4.50m x 3.30m)

Kitchen

9' 2" x 8' 0" (2.79m x 2.44m)

Bathroom

6' 9" x 6' 2" (2.06m x 1.88m)

Bedroom One

13' 5" x 10' 10" (4.09m x 3.30m)

Bedroom Two

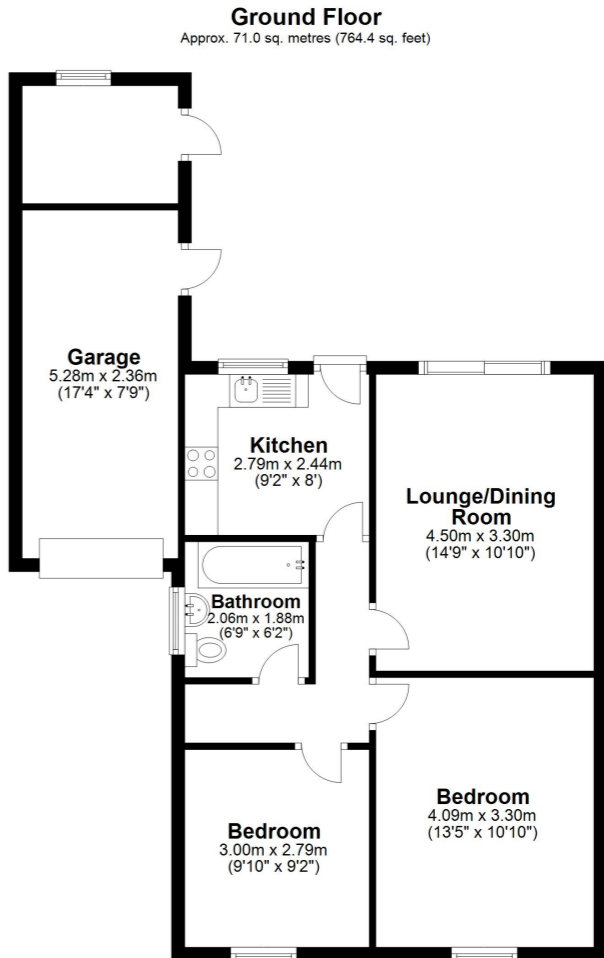
9' 10" x 9' 2" (3.00m x 2.79m)

South Facing Rear Garden

Garage

17' 4" x 7' 9" (5.28m x 2.36m)

Driveway/Off Road Parking



Total area: approx. 71.0 sq. metres (764.4 sq. feet)

Whilst every attempt has been made to ensure the accuracy of the floor plan contained here, measurements of doors, windows, rooms and any other items are approximate and no responsibility is taken for any error, omission or mis-statement. This plan is for illustrative purposes only and should be used as such by any prospective purchaser. Plan produced using PlanUp.

