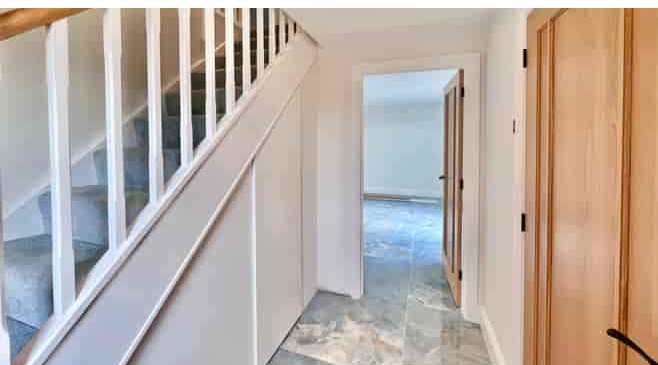




Beech Barn, 4 Little Worsham Farm Worsham
Lane, Bexhill On Sea, East Sussex, TN40 2QP

£499,950

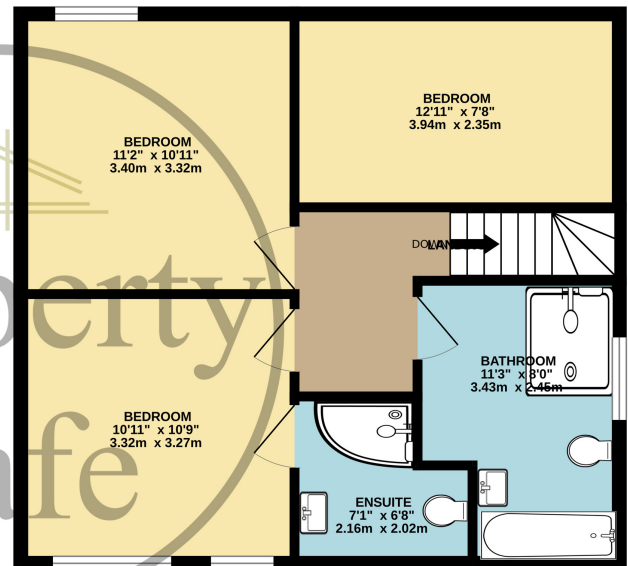
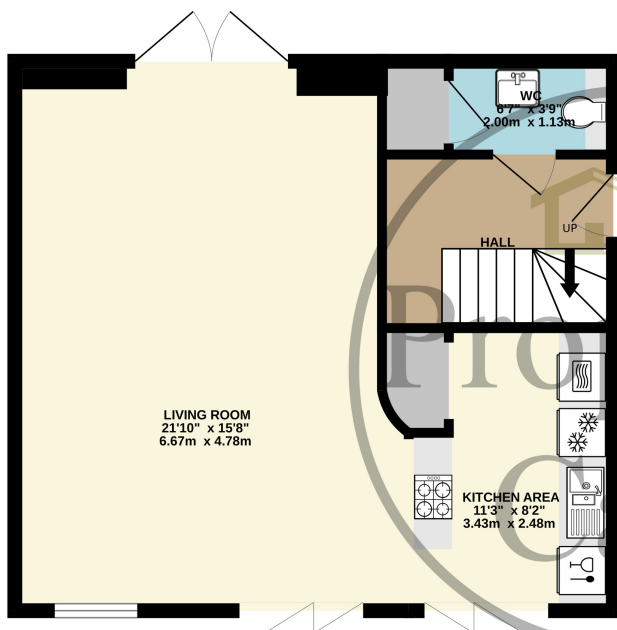


- Situated in a Rural Location
- Exclusive Barn Conversion
- Large Open Plan Living/Dining Area
- 10 Year ABC Builders Warranty
- Well Decorated And Looked After Throughout
- Viewings are highly recommended By Property Café
- Great Insulation and Energy Efficiency
- Three Well Sized Bedroom
- Unique Barn Conversion Development
- Large Private Patio and Garden Areas
- To Enquiry Please Call On 01424 224488



GROUND FLOOR
513 sq.ft. (47.6 sq.m.) approx.

1ST FLOOR
521 sq.ft. (48.4 sq.m.) approx.



TOTAL FLOOR AREA : 1034 sq.ft. (96.0 sq.m.) approx.

Whilst every attempt has been made to ensure the accuracy of the floorplan contained here, measurements of doors, windows, rooms and any other items are approximate and no responsibility is taken for any error, omission or mis-statement. This plan is for illustrative purposes only and should be used as such by any prospective purchaser. The services, systems and appliances shown have not been tested and no guarantee as to their operability or efficiency can be given.
Made with Metropix ©2024

