

Swaledale Road

Warminster, BA12 8FJ

COOPER
AND
TANNER



£220,000 Freehold

An outstanding and beautifully presented two bedroom semi detached coach house offering light and airy accommodation. This wonderful home has the advantage of having an exclusive enclosed garden and allocated parking space. The present seller has made numerous improvements since ownership and viewing comes highly recommended.

Swaledale Road
Warminster
BA12 8FJ

 2  1  1 EPC C

£220,000 Freehold

THE HOME

Cooper and Tanner are please to offer this beautifully presented and exceptionally well-maintained two-bedroom semi-detached coach house, offering bright, spacious and airy accommodation throughout. This delightful home benefits from an exclusive enclosed garden along with an allocated parking space. The current owner has carried out numerous tasteful improvements, ensuring the property is ready to move into. Early viewing is highly recommended.

LOCATION

The town of Warminster offers a wide range of shopping and leisure facilities to include library, sports centre, swimming pool, schools, churches, doctors' and dentists' surgeries, hospital and post office. Warminster also benefits from a main line railway station to London Waterloo whilst the nearby A303 provides excellent road links to London to the east and Exeter to the west. Local attractions include Longleat House and Safari Park, Shearwater Lake, Stourhead and Salisbury Plain.

OUTSIDE

To the front of the property an exclusive drive provides parking. A wooden gate leads into the beautifully presented and enclosed garden.

COUNCIL TAX BAND B - WILTSHIRE COUNCIL

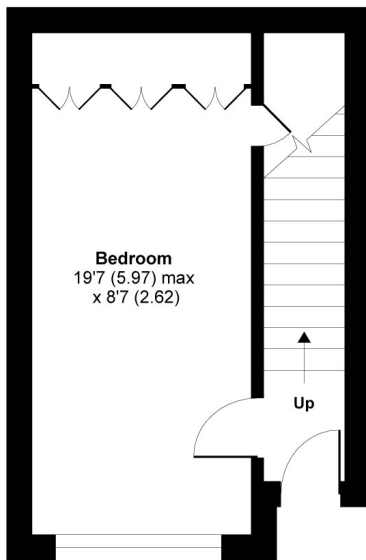




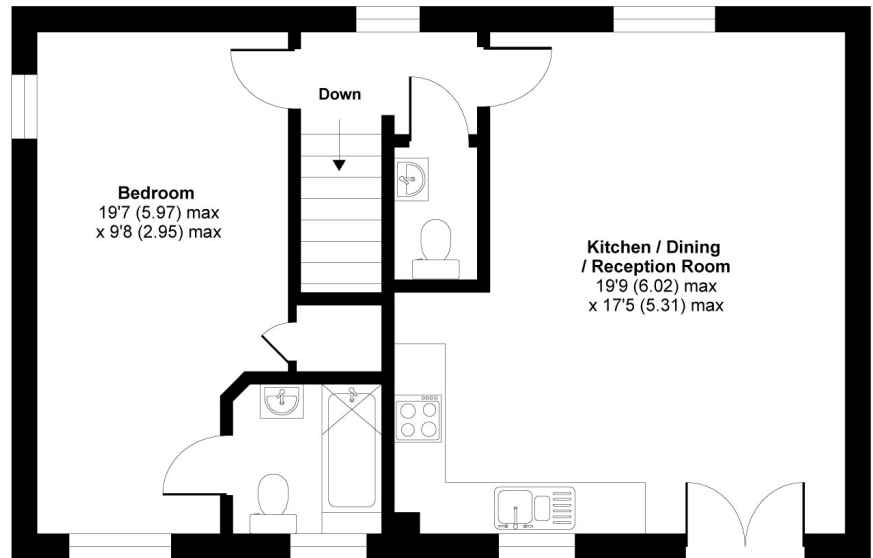
Swaledale Road, Warminster, BA12

Approximate Area = 860 sq ft / 79.8 sq m

For identification only - Not to scale



GROUND FLOOR



FIRST FLOOR

 Floor plan produced in accordance with RICS Property Measurement 2nd Edition, incorporating International Property Measurement Standards (IPMS2 Residential). © nichecom 2026. Produced for Cooper and Tanner. REF: 1434180

WARMINSTER OFFICE

Telephone 01985 215579

48-50, Market Place, Warminster, Wiltshire BA12 9AN

warminster@cooperandtanner.co.uk

**COOPER
AND
TANNER**

Important Notice: These particulars are set out as a general outline only for the guidance of intended purchasers and do not constitute, nor constitute part of, an offer or contract. All descriptions, dimensions, reference to condition and necessary permissions for use and occupation, warranties and other details are given without responsibility and any intending purchasers should not rely on the matters as statements or representations of fact but must satisfy themselves by inspection or otherwise as to the correctness of each of them.

