



Church Street

Shillington | Hitchin | Bedfordshire | SG5 3LH

www.stonegate-estates.co.uk



CHURCH STREET

Property Description

Behold, a magnificent detached house of grandeur awaits in the serene village of Shillington. This splendid abode boasts an array of desirable features including a cosy wood burner, a recently refitted kitchen and a sprawling rear garden, all encompassed within 2500 sq/ft of space.

Nestled within this charming village are two churches, two public houses, a convenient village shop and a welcoming village hall, alongside the esteemed village lower school for the education of young minds. Delight in exploring over 30 miles of picturesque footpaths that wind through the attractive setting surrounding the property.

Within the walls of this fine residence are four double bedrooms, a study for scholarly pursuits and luxurious en-suite facilities within the master bedroom. Parking is no issue with space off road for two cars and a triple garage with a multitude of uses.

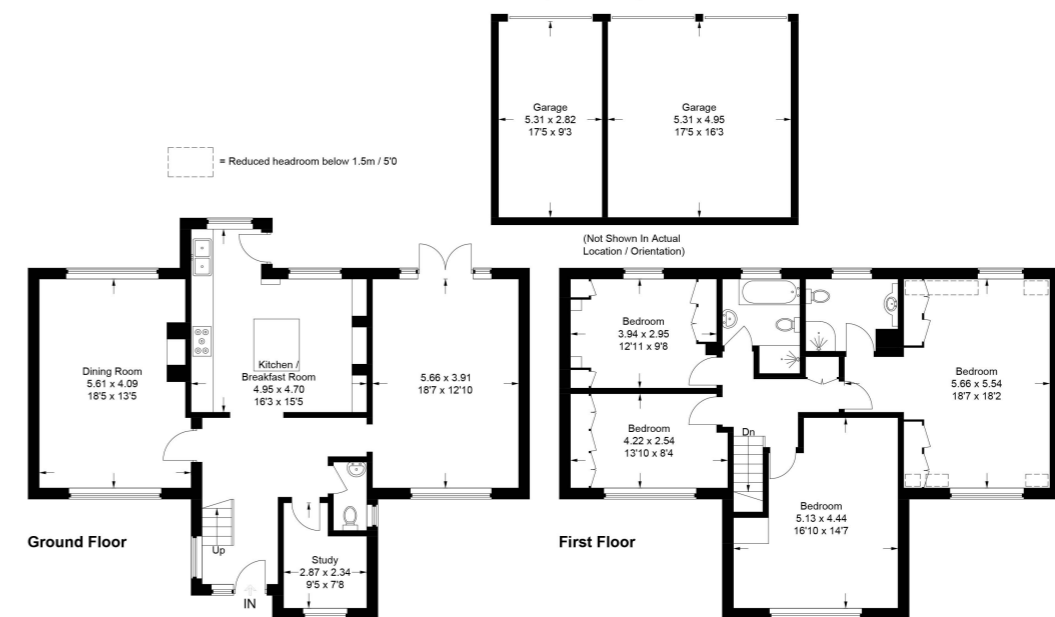
This idyllic haven, in excellent condition, offers a sanctuary for a discerning family seeking comfort and sophistication. A Residential sale of utmost quality, do not miss the opportunity to view this extraordinary property.

£850,000 Freehold





Approximate Gross Internal Area
 Ground Floor = 89.2 sq m / 960 sq ft
 First Floor = 87.6 sq m / 943 sq ft
 Garages = 41.1 sq m / 442 sq ft
 Total = 217.9 sq m / 2,345 sq ft



This plan is for layout guidance only. Not drawn to scale unless stated. Windows and door openings are approximate. Whilst every care is taken in the preparation of this plan, please check all dimensions, shapes and compass bearings before making any decisions reliant upon them.
 © CJ Property Marketing Ltd Produced for Stonegate Estates



- Four Double Bedrooms
- Three Reception Rooms
- Village Location
- Triple Garage
- Generous Gardens
- En-Suite
- Refitted Kitchen
- Individual Detached House

EPC Rating:

Stonegate Estate Agents

01462 438979

sales@stonegate-estates.co.uk | www.stonegate-estates.co.uk

